

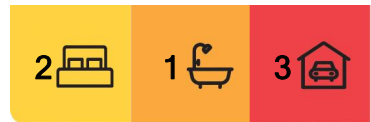


Russell Island, 13 Grevillea Street

FIRST HOME OWNERS, INVESTORS, DOWN SIZERS....BE QUICK!

Discover the perfect blend of tranquility and convenience with this delightful home at 13 Grevillea Street, Russell Island. This charming residence is ideal for first home buyers or couples seeking a peaceful escape without sacrificing modern comforts. Nestled in a fabulous location, this affordable gem offers a serene island lifestyle with the bonus of undercover parking and ample workshop space OR create an extra living space or rumpus Room.

Built in 2021, this home exudes a fresh and welcoming atmosphere. The open-plan living area extends to a timber deck, perfect for outdoor entertaining or simply relaxing in the fresh island air. Fully fenced, the property ensures privacy and security, making it an inviting haven for you and your loved ones. With air conditioning and broadband internet available, comfort and connectivity are assured.



For Sale
Offers Over \$370,000

View
ljhooker.com.au/BSNDF2S

Contact
Sue Bloomfield
0408 789 399
sbloomfield@pcbi.com.au

Donna Pinkerton
0400 997 699
dpinkerton@pcbi.com.au



LJ Hooker Property Centre
(07) 3286 2500

Disclaimer: All information contained therein is gathered from relevant third parties sources. We cannot guarantee or give any warranty about the information provided. Interested parties must rely solely on their own enquiries.

- * 2 bed, 1 bath, 1 study/nursery
- * dishwasher
- * separate laundry
- * timber look floors throughout
- * timber deck at front
- * rear stairs for back yard access
- * solar panels
- * fully fenced - great for your fur babies
- * quiet enclave with one way in and one way out
- * lots of quality news homes in this neighbourhood
- * opportunity to value add to this property

Investment potential:

Strong rental demand

Anticipated rental return \$420-\$440pw

****Ask how to qualify for first 3 months free property management****

Russell Island boasts a strong sense of community and offers easy access to essential amenities. Enjoy the convenience of nearby parks and local shops, all while being just a short ferry ride from the mainland. Don't miss this exceptional opportunity to secure your own slice of paradise at an unbeatable price. Act now to make this charming island retreat yours!

Distances:

To ferry: 1.3 klm 3 min drive or 15 min walk

To Shopping village: 1.1 klm, 2 min drive or 14 min walk

To boat ramp: 1.5 klm 3 min drive or 20 min walk

To dog park and playground: 1.5 klm 3 min drive or 15 min walk

To Sandy Beach/playground: 6.9 klm 9 min drive

Call now to book an inspection. This home will NOT last! Rental appraisal available on request.



LJ Hooker Property Centre
(07) 3286 2500

Disclaimer: All information contained therein is gathered from relevant third parties sources. We cannot guarantee or give any warranty about the information provided. Interested parties must rely solely on their own enquiries.

More About this Property

Property ID	BSNDF2S
Property Type	House
Land Area	546 m ²
Including	Air Conditioning Toilets (1) Deck Outdoor Entertaining Workshop Secure Parking Fully Fenced

Sue Bloomfield 0408 789 399

Sales Agent â€“ Canaipa Residential Pty Ltd | sbloomfield@pcbi.com.au

Donna Pinkerton 0400 997 699

Independent Contractor - Canaipa Residential Pty Ltd | dpinkerton@pcbi.com.au

LJ Hooker Property Centre (07) 3286 2500

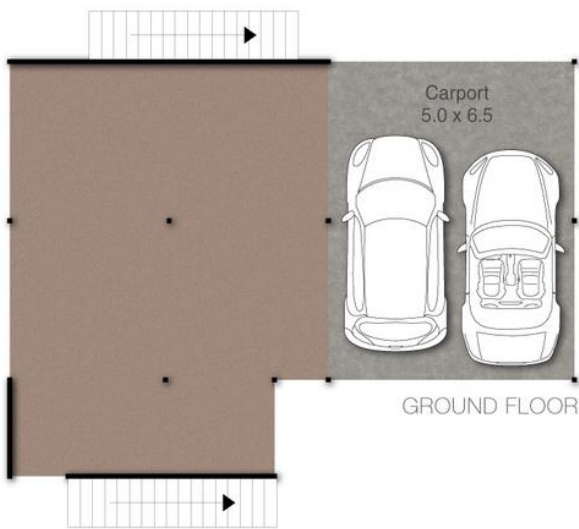
152-164 Shore Street West, Raby Bay, Brisbane QLD 4163
propertycentre.ljhooker.com.au | hello@ljhpc.com.au



Disclaimer: All information contained therein is gathered from relevant third parties sources.

We cannot guarantee or give any warranty about the information provided. Interested parties must rely solely on their own enquiries.

LJ Hooker Property Centre
(07) 3286 2500



13 Grevillea Street, Russell Island

Approx Covered Area: 135m²



PLEASE NOTE THIS PLAN IS FOR MARKETING PURPOSES AND IS TO BE USED AS A GUIDE ONLY. ALL MARKINGS, MEASUREMENTS, AREAS, AND LAYOUT ARE INDICATIVE ONLY AND INTERESTED PARTIES SHOULD MAKE THEIR OWN ENQUIRIES BEFORE MAKING ANY DECISIONS. FLOOR COVERINGS INDICATED ARE FOR ILLUSTRATIVE PURPOSES ONLY AND MAY NOT ACCURATELY PORTRAY ACTUAL FLOOR COVERINGS OF THE PROPERTY. NO GUARANTEES ARE MADE REGARDING THE INFORMATION CONTAINED IN THIS PLAN AND NO LIABILITY FOR ANY INACCURACIES IS ACCEPTED.