



Russell Island, 1 Waterlea Street

Roll up your sleeves and reap the rewards

All the hard work has been done, this lovely just needs a few finishing touches and you will have a brand spanking new home at below replacement cost and without having to join the long wait list for a quality builder. First homebuyers, run don't walk!

Features include:

Free flowing open plan living

2 bedrooms- both with ensuites, main with double shower and twin basins

Galley style kitchen with walk in pantry and stainless-steel appliances, large central island bench, timber benchtops and panoramic window splash back

Central vaulted ceiling feature allows ample natural light to permeate throughout

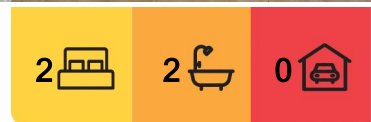
Great north end location on a sealed road- 687m2 corner block

To Passenger ferry and vehicle barge: 4 min (2.1km)

To Village shopping: 3 min (1.9km)



Disclaimer: All information contained therein is gathered from relevant third parties sources. We cannot guarantee or give any warranty about the information provided. Interested parties must rely solely on their own enquiries.



For Sale
Offers over \$340,000

View
ljhooker.com.au/BRCUF2S

Contact
Donna Pinkerton
0400 997 699
dpinkerton@pcbi.com.au
Sue Bloomfield
0408 789 399
sbloomfield@pcbi.com.au

LJ Hooker Property Centre
(07) 3286 2500

To Primary School: 2 min (1.5km)
To Bay Islands Aquatic Centre: 3 min (1.7km)
To Russell Island RSL: 4 min (2.6km)
To Russell Island Bowls Club: 4 min (2.6km)
To Jock Kennedy Boat Ramp: 4 min (2.4km)
To Russell Island Boat Ramp (Wahine Drive): :8 min (5.7km)
To Sandy Beach Recreational Reserve: 10 min (8.2km)

For a copy of the Develo report containing information regarding all overlays and utility placements, just hit the enquire button now.

Russell Island is part of Redland City, Queensland and the largest of the Southern Moreton Bay Islands. It has a length of 8 kilometers and width of nearly 3 kilometers and is situated between North Stradbroke Island and the mainland. Home to evocatively named landmarks such as Kinbinkibbinwa Point, Ooncooncoo Bay and the Whistling Kite Wetlands, Russell (Canaipa) has a rich history; originally inhabited by indigenous residents later limeburners, timbergetters, oystermen and sugar, fruit and cotton farmers of yesteryear called the island home.

We now have a range of facilities and services that include and RSL and Bowls Club, a shopping center that includes a Supa IGA, post office, bakery and hair dresser. We also have a police station, ambulance center, public swimming pool, primary school, child care centre hardware store, petrol station, vet, pet store, and several great cafes. There is also a medical center, pathology collection center and pharmacy.

The waters around the Southern Moreton Bay Islands are a great attraction for boaties of every type, canoeists and fisherman. For tourists, tripadvisor suggests that visitors enjoy our beautiful sunrises and sunsets from our coastline or parks, the biking and walking trails. We also have a number of Galleries, markets scheduled on a regular basis and swimming pool. weekendnotes.com lists Russell island as number 4 in the top places to Kayak in Brisbane

To Passenger ferry and vehicle barge: 9 min (6.5km)
To Village shopping: 8 min (6.2km)
To Primary School: 8 min (5.9km)
To Bay Islands Aquatic Centre: 8 min (6km)
To Russell Island RSL: 9 min (6.9km)
To Russell Island Bowls Club: 7 min (5.5km)
To Jock Kennedy Boat Ramp: 6 min (2.5km)
To Russell Island Boat Ramp (Wahine Drive):
To Sandy Beach Recreational Reserve:

For a copy of the Develo report containing information regarding all overlays and utility placements, just hit the enquire button now.

Russell Island is part of Redland City, Queensland and the largest of the Southern Moreton Bay Islands. It has a length of 8 kilometers and width of nearly 3 kilometers and is situated between North Stradbroke Island and the mainland. Home to evocatively named landmarks such as Kinbinkibbinwa Point, Ooncooncoo Bay and the Whistling Kite Wetlands, Russell (Canaipa) has a rich history; originally inhabited by indigenous



LJ Hooker Property Centre
(07) 3286 2500

Disclaimer: All information contained therein is gathered from relevant third parties sources. We cannot guarantee or give any warranty about the information provided. Interested parties must rely solely on their own enquiries.

residents later limeburners, timbergetters, oystermen and sugar, fruit and cotton farmers of yesteryear called the island home.

We now have a range of facilities and services that include an RSL and Bowls Club, a shopping center that includes a Supa IGA, post office, bakery and hair dresser. We also have a police station, ambulance center, public swimming pool, primary school, child care centre, hardware store, petrol station, vet, pet store, and several great cafes. There is also a medical center, pathology collection center and pharmacy.

The waters around the Southern Moreton Bay Islands are a great attraction for boaties of every type, canoeists and fisherman. For tourists, tripadvisor suggests that visitors enjoy our beautiful sunrises and sunsets from our coastline or parks, the biking and walking trails. We also have a number of Galleries, markets scheduled on a regular basis and swimming pool. weekendnotes.com lists Russell island as number 4 in the top places to Kayak in Brisbane

All information contained herein is gathered from sources we consider to be reliable. However, we cannot guarantee or give any warranty about the information provided. Interested parties must solely rely on their own enquiries.

More About this Property

| | |
|----------------------|--------------------|
| Property ID | BRCUF2S |
| Property Type | House |
| Land Area | 587 m ² |

Donna Pinkerton 0400 997 699

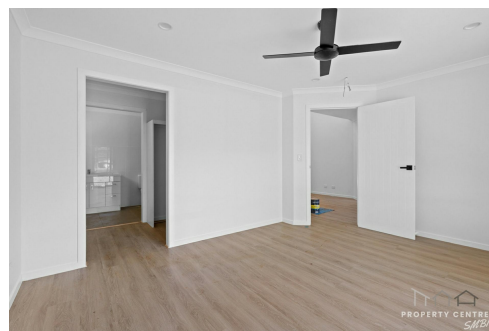
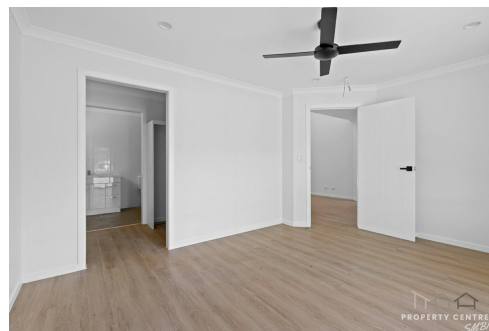
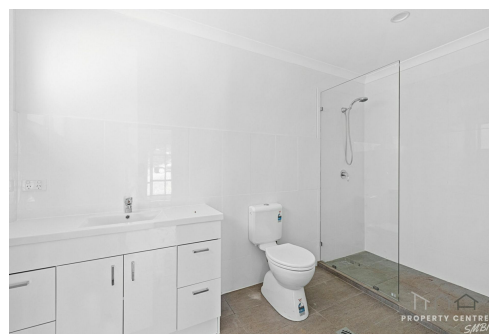
Independent Contractor - Canaipa Residential Pty Ltd | dpinkerton@pcbi.com.au

Sue Bloomfield 0408 789 399

Sales Agent " Canaipa Residential Pty Ltd | sbloomfield@pcbi.com.au

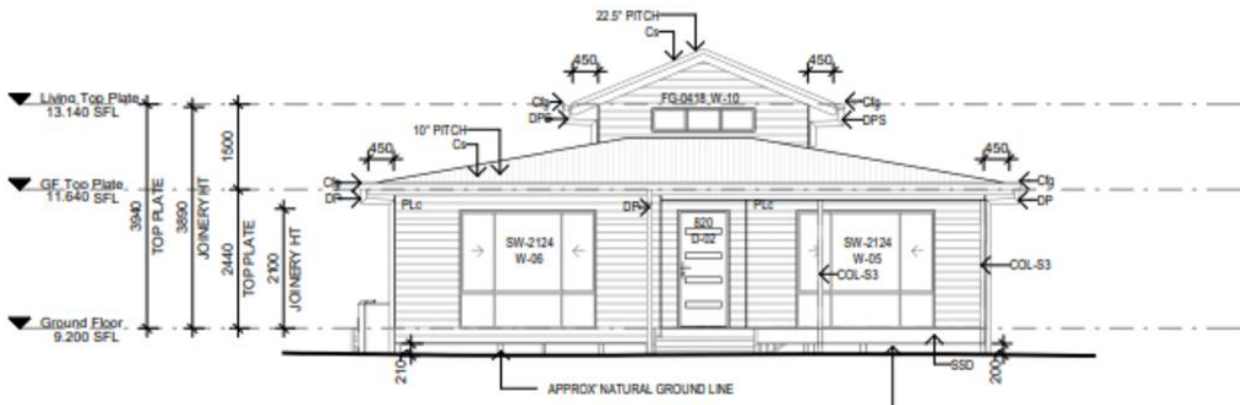
LJ Hooker Property Centre (07) 3286 2500

152-164 Shore Street West, Raby Bay, Brisbane QLD 4163
propertycentre.ljhooker.com.au | hello@ljhpc.com.au

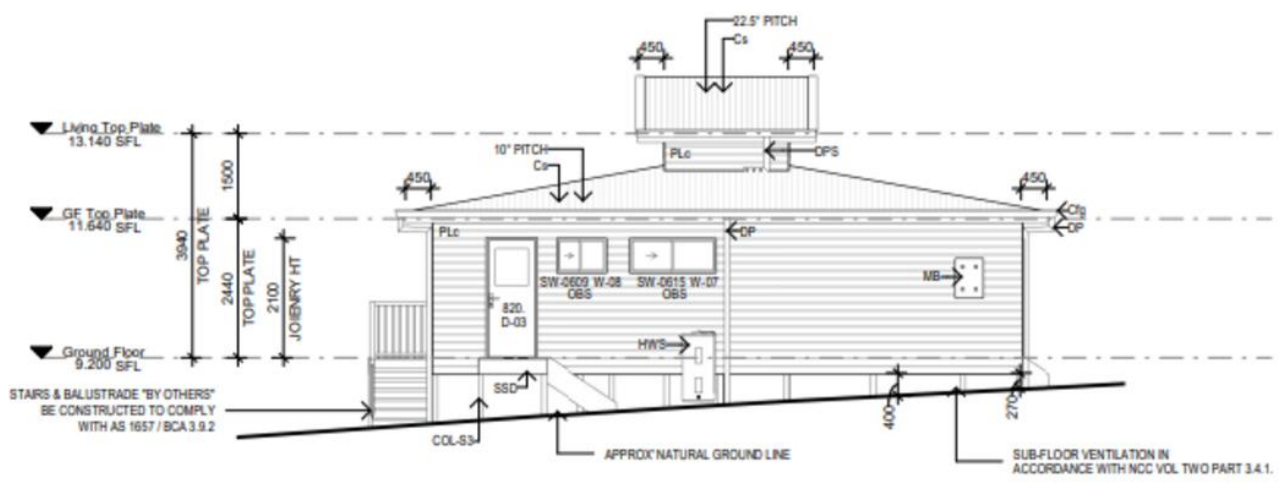


LJ Hooker Property Centre
(07) 3286 2500

Disclaimer: All information contained therein is gathered from relevant third parties sources. We cannot guarantee or give any warranty about the information provided. Interested parties must rely solely on their own enquiries.



① SOUTH. ELEVATION
1 : 100



WEST ELEVATION