



Russell Island, 1 Oasis Drive

Position, Presentation, Perfection

Contemporary haven just a stones throw to water in a tightly held enclave on the sought after Canaipa Peninsula. Fabulous all weather outdoor living areas, big breezy open plan living, king size bedrooms and established low maintenance gardens make this home the perfect choice for those looking to entertain in style with minimal maintenance.

The Home:

Free flowing central living area incorporates lounge, kitchen, formal and informal dining complete with neutral decore and bamboo floors- air conditioned for year round comfort Quality kitchen with stone benchtops, 2 pak finish, induction electric cooktop, wall oven, ranghood, oversize pantry and dishwasher.

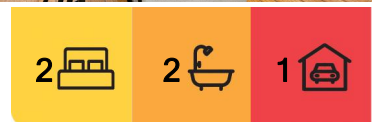
Central Island bench with sink and breakfast bar under feature hanging pendant lighting Master bedroom, kingsize, carpeted floors, airconditioning, walk in robe, oversize easy access shower

Massive master bedroom with airconditoning and carpeted floors. Ensuite with oversize



Disclaimer: All information contained therein is gathered from relevant third parties sources.

We cannot guarantee or give any warranty about the information provided. Interested parties must rely solely on their own enquiries.



For Sale

Offers Over \$590,000

View

By Appointment

Contact

Donna Pinkerton

0400 997 699

dpinkerton@ljhpropertycentre.com.au

Sue Bloomfield

0408 789 399

sbloomfield@pcbi.com.au

LJ Hooker Property Centre
(07) 3286 2500

shower, crisp neutral tone tiles and walk in robe
Bedroom 2, Kingsize with 2 way bathroom access, carpeted floors
Media room/3rd bedroom with robe
Separate laundry with custom cabinetry and internal access from garage
Oversize single garage with built in
Ceiling fans throughout

The Land

630m² block with 18.5m frontage, 33.4m depth
Level allotment, fully landscaped
Neighbours on the right and behind, natural bushland acreage to the left
South east aspect with water views
Garden shed

The Position

To Passenger ferry and vehicle barge: 4 min (1.9km)
To Village shopping: 3 min (1.8km)
To Bay Islands Aquatic Centre: 3 min (1.7km)
To Primary School: 3 min (1.9km)
To Russell Island RSL: 3 min (1.1km)
To Russell Island Bowls Club: 5 min (3.5km)
To Jock Kennedy Boat Ramp: 4 min (2.4km)
To Russell Island Boat Ramp (Wahine Drive): 9 min (6.5km)
To Sandy Beach Recreational Reserve: 12km (9km)

For a copy of the Develo report containing information regarding all overlays and utility placements, just hit the enquire button now.

Russell Island is part of Redland City, Queensland and the largest of the Southern Moreton Bay Islands. It has a length of 8 kilometers and width of nearly 3 kilometers and is situated between North Stradbroke Island and the mainland. Home to evocatively named landmarks such as Kinbbinkibbinwa Point, Ooncooncoo Bay and the Whistling Kite Wetlands, Russell (Canaipa) has a rich history; originally inhabited by indigenous residents later limeburners, timbergetters, oystermen and sugar, fruit and cotton farmers of yesteryear called the island home.

We now have a range of facilities and services that include an RSL and Bowls Club, a shopping center that includes a Supa IGA, post office, bakery and hair dresser. We also have a police station, ambulance center, public swimming pool, primary school, child care centre hardware store, petrol station, vet, pet store, and several great cafes. There is also a medical center, pathology collection center and pharmacy.

The waters around the Southern Moreton Bay Islands are a great attraction for boaties of every type, canoeists and fisherman. For tourists, tripadvisor suggests that visitors enjoy our beautiful sunrises and sunsets from our coastline or parks, the biking and walking trails. We also have a number of Galleries, markets scheduled on a regular basis and swimming pool. weekendnotes.com lists Russell island as number 4 in the top places to Kayak in Brisbane

All information contained herein is gathered from sources we consider to be reliable.



LJ Hooker Property Centre
(07) 3286 2500

Disclaimer: All information contained therein is gathered from relevant third parties sources. We cannot guarantee or give any warranty about the information provided. Interested parties must rely solely on their own enquiries.

However, we cannot guarantee or give any warranty about the information provided.
Interested parties must solely rely on their own enquiries.

More About this Property

Property ID	BRW6F2S
Property Type	House
Land Area	630 m ²

Donna Pinkerton 0400 997 699

Independent Contractor - Canaipa Residential Pty Ltd |

dpinkerton@ljhpropertycentre.com.au

Sue Bloomfield 0408 789 399

Sales Agent " Canaipa Residential Pty Ltd | sbloomfield@pcbi.com.au

LJ Hooker Property Centre (07) 3286 2500

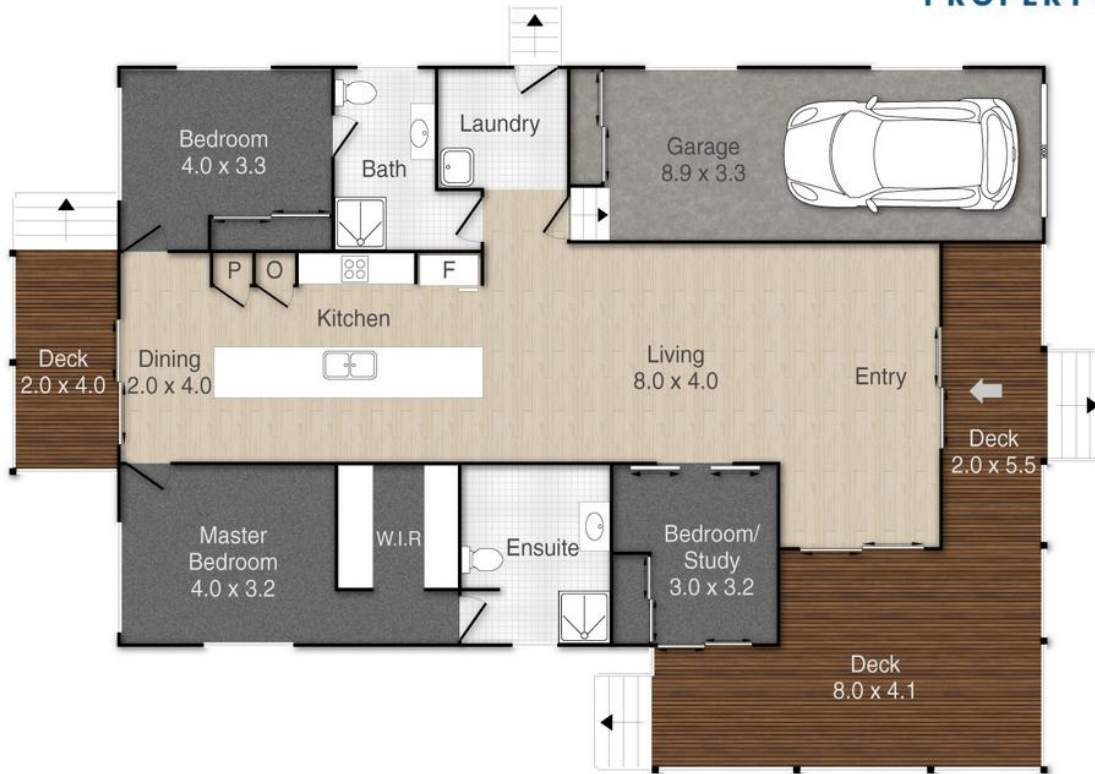
152-164 Shore Street West, Raby Bay, Brisbane QLD 4163

propertycentre.ljhooker.com.au | hello@ljhpc.com.au



LJ Hooker Property Centre
(07) 3286 2500

Disclaimer: All information contained therein is gathered from relevant third parties sources.
We cannot guarantee or give any warranty about the information provided. Interested parties must rely solely on their own enquiries.



1 Oasis Drive, Russell Island

PLEASE NOTE THIS PLAN IS FOR MARKETING PURPOSES AND IS TO BE USED AS A GUIDE ONLY. ALL MARKINGS, MEASUREMENTS, AREAS, AND LAYOUT ARE INDICATIVE ONLY AND INTERESTED PARTIES SHOULD MAKE THEIR OWN ENQUIRIES BEFORE MAKING ANY DECISIONS. FLOOR COVERINGS INDICATED ARE FOR ILLUSTRATIVE PURPOSES ONLY AND MAY NOT ACCURATELY PORTRAY ACTUAL FLOOR COVERINGS OF THE PROPERTY. NO GUARANTEES ARE MADE REGARDING THE INFORMATION CONTAINED IN THIS PLAN AND NO LIABILITY FOR ANY INACCURACIES IS ACCEPTED.