



## Rushcutters Bay, 42/1 Holdsworth Avenue

Renovated Apartment with Views to Rushcutters Bay and direct access to Park.

Abounding with natural light and blessed with a sublime outlook across the waters park, and marina of Rushcutters Bay, this gorgeous 2-bedroom apartment is a tranquil haven in a revered building. Set on the 4th level of the distinguished "Elizabeth Gardens" in a super-quiet cul-de-sac, it offers serene living in an enviable and unique park-side setting, complete with private undercover parking. A radiant living/dining area is a lovely space opening to a sun-washed balcony which beautifully embraces the stunning views, a great spot for alfresco dining or a morning coffee. The generous master bedroom boasts the same superb outlook plus extensive b/in robes, while the quiet 2nd also features b/ins and a tree-framed outlook. With large modern kitchen looking across to historic Reg Bartley Oval and featuring space for internal laundry plus a chic bathroom with bathtub and shower, this delightful apartment covers every base for superb Inner-East living. With easy access to private parking, coveted storage room in lobby area, and just steps to the harbour foreshore at Rushcutters Bay Park, within easy reach of cafes, shopping, tennis



**For Sale**  
For Sale | \$1,865,000

**View**  
By Appointment

**Contact**  
**Aaron Del Monte**  
0447 144 434  
aaron.delmonte@ljhdoublebay.com

**Kevin O'Kane**  
0449 960 940  
kevin@ljhdoublebay.com

# LJ Hooker

**LJ Hooker Double Bay**  
**(02) 9185 2816**

**Disclaimer:** All information contained therein is gathered from relevant third parties sources. We cannot guarantee or give any warranty about the information provided. Interested parties must rely solely on their own enquiries.

courts, and buses, this sparkling gem is ready and waiting for the new owner to fall in love with:

- 4th level of Elizabeth Gardens with stunning views
- Postcard aspect over Rushcutters Bay, CYC, park
- Sun-filled living/dining area flows to ideal balcony
- Balcony lovely for alfresco dining, morning coffee
- Large kitchen with Bosch cooking, lIve dishwasher
- Radiant master bed w/ huge b/ins, sweeping views
- Quiet 2nd bedroom w/ b/ins, fine greenery outlook
- Chic modern bathroom featuring bath and shower
- Carpeted bedrooms and living area, hall storage
- Coveted building, easy lift to undercover parking
- Well-maintained common areas, common laundry
- Int. laundry space in kitchen, lobby storage room
- Few common walls, cherished park-side location
- A stroll to cafes, Macleay St amenities, transport
- Steps to harbour foreshore, Rushcutters Bay Park

## More About this Property

<b>Property ID</b>	235HYY
<b>Property Type</b>	Apartment
<b>Land Area</b>	97 m <sup>2</sup>
<b>Including</b>	Air Conditioning Balcony Dishwasher Built-in-Robes Area Views Close to Schools Close to Shops Close to Transport Ocean Views Openable Windows

### Aaron Del Monte 0447 144 434

Managing Director | [aaron.delmonte@ljhdoublbay.com](mailto:aaron.delmonte@ljhdoublbay.com)

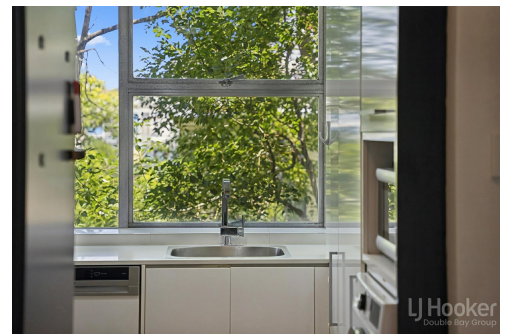
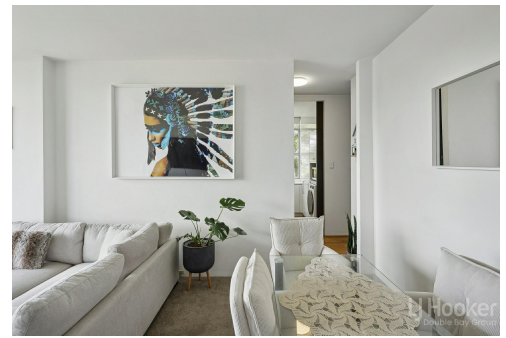
### Kevin O'Kane 0449 960 940

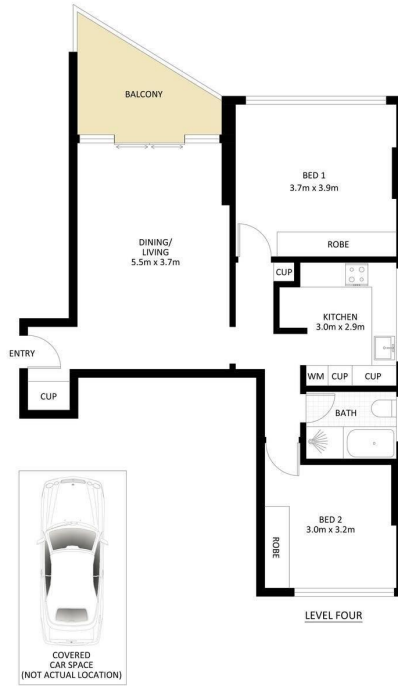
Property Partner | [kevin@ljhdoublbay.com](mailto:kevin@ljhdoublbay.com)

### LJ Hooker Double Bay (02) 9185 2816

38 Ocean Street, WOOLLAHRA NSW 2025

[doublebay.ljhooker.com.au](http://doublebay.ljhooker.com.au) | [admin@ljhdoublbay.com](mailto:admin@ljhdoublbay.com)





42/1 Holdsworth Avenue, Elizabeth Bay

\*PLANS SHOWN ONLY INDICATIVE OF LAYOUT, DIMENSIONS ARE APPROXIMATE.  
Measurements are approximate and not to scale. The vendor, agency and supplier will accept no liability for its accuracy. Interested parties are advised to make their own independent enquiries.