



Rushcutters Bay, 35/1 Holdsworth Avenue

Sundrenched Two-Bedroom Apartment with Stunning Water and Park Views



For Sale
Sold Prior to Auction

View
ljhooker.com.au/26AHYY

Contact
Aaron Del Monte
0447 144 434
aaron.delmonte@ljhdoublebay.com

Kevin O'Kane
0449 960 940
kevin@ljhdoublebay.com

This beautifully refurbished two-bedroom apartment in the highly sought-after "Elizabeth Gardens" building presents a rare opportunity for modern living with stunning, uninterrupted views of parklands, shimmering waters, and sailboats from both the living area and main bedroom.

Located in a prime corner wing, the apartment is just footsteps from the harbourside, local cafés and delis, beautiful parks, tennis courts, marinas, and the trendy Potts Point area with its boutiques, restaurants, and transport options. The apartment features a spacious open living/dining area that flows to a sundrenched balcony with scenic views.

Both bedrooms are generously sized, with built-ins, and the main bedroom enjoys the same spectacular outlook. The kitchen is recently renovated with stainless steel appliances, including a dishwasher, while the bathroom has been updated with modern

LJ Hooker

Disclaimer: All information contained therein is gathered from relevant third parties sources. We cannot guarantee or give any warranty about the information provided. Interested parties must rely solely on their own enquiries.

LJ Hooker Double Bay
(02) 9185 2816

finishes and includes internal laundry facilities.

Additional conveniences include a separate storage cage, allocated secure undercover car space, and level lift access within a well-maintained security building. With a walkway to Rushcutters Bay Park right at your doorstep, this apartment offers a truly exceptional lifestyle in one of the area's most desirable locations.

More About this Property

Property ID	26AHYY
Property Type	Apartment

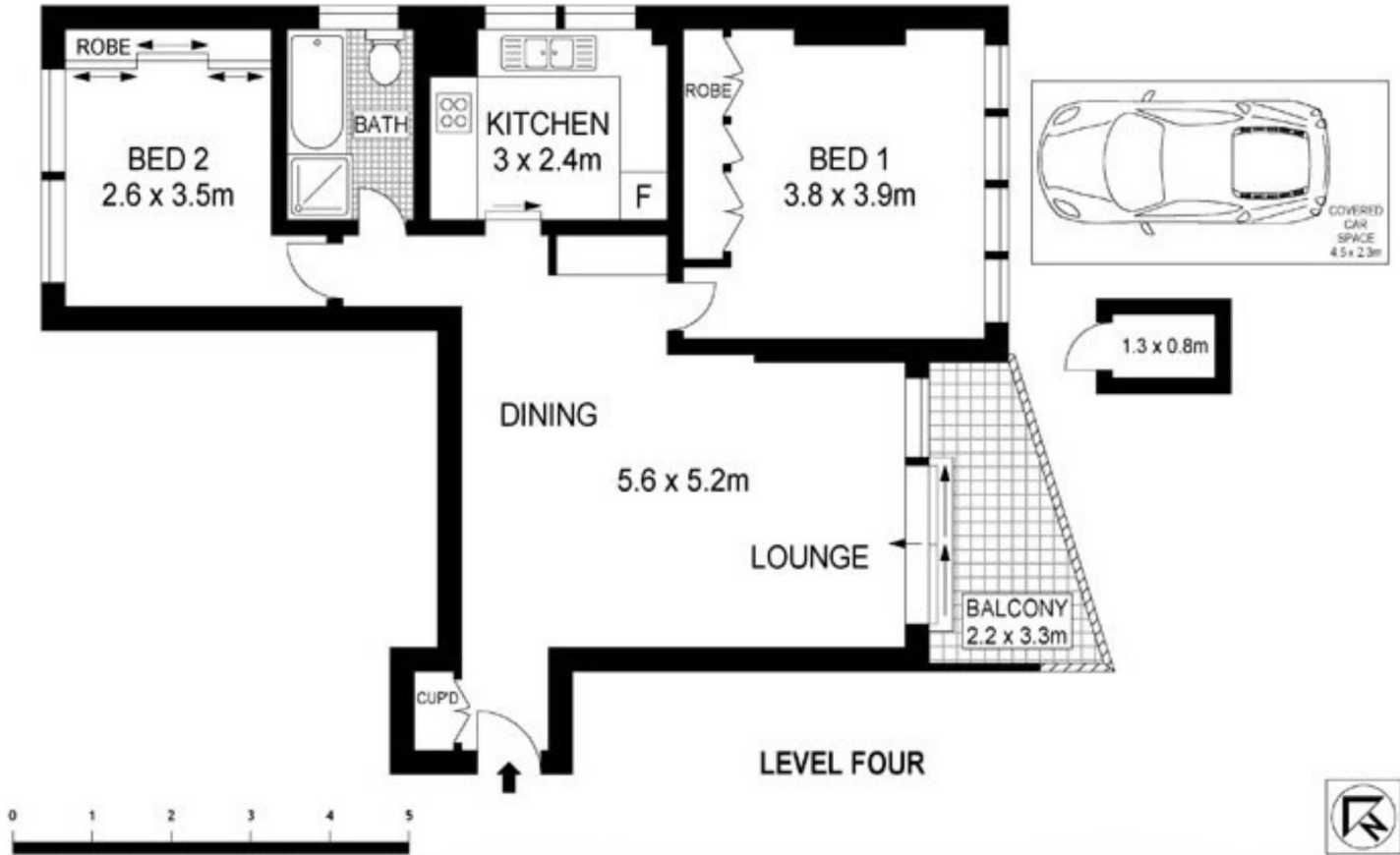
Aaron Del Monte 0447 144 434
Managing Director | aaron.delmonte@ljhdoublebay.com
Kevin O'Kane 0449 960 940
Property Partner | kevin@ljhdoublebay.com

LJ Hooker Double Bay (02) 9185 2816
38 Ocean Street, WOOLLAHRA NSW 2025
doublebay.ljhooker.com.au | admin@ljhdoublebay.com



LJ Hooker Double Bay
(02) 9185 2816

Disclaimer: All information contained therein is gathered from relevant third parties sources. We cannot guarantee or give any warranty about the information provided. Interested parties must rely solely on their own enquiries.



35/1 Holdsworth Avenue, Rushcutters Bay

This floorplan is provided for illustrative purposes only and is not to scale. All measurements, dimensions, and areas are approximate and subject to change. No responsibility is taken for any errors, omissions, or misstatements. Prospective buyers should make their own inquiries and rely on their own investigations to confirm the accuracy of the information provided.