



Rowville, 199 Waradgery Drive

AUCTION THIS SATURDAY AT 2.30PM The Family Entertainer!

Nestled in the vibrant community of Rowville and boasting a close proximity to Stud Park Shopping Centre, esteemed schools, convenient public transport options, and lush parks,, this expansive family residence offers the perfect blend of comfort, convenience, and luxury living.

Upon entering, you'll be captivated by the grandeur of this spacious abode. Step into the elegant formal lounge and dining areas, ideal for entertaining guests or enjoying intimate family gatherings. Continuing through, discover the heart of the home - a generous family meals room seamlessly connected to a fully equipped hostess kitchen complete with modern appliances, including a dishwasher, catering to all your culinary needs.

With five bedrooms spread throughout, including a palatial master bedroom featuring a luxurious full ensuite, this home offers ample space for the entire family to unwind and



Disclaimer: All information contained therein is gathered from relevant third parties sources. We cannot guarantee or give any warranty about the information provided. Interested parties must rely solely on their own enquiries.

5

3

2

For Sale

\$990,000 - \$1,080,000

View

ljhooker.com.au/47W3BFHE

Contact

John Deo

0411 873 123

john.deo@ljhcasey.com.au

Mohsen Jaffari

0421 451 974

mohsen.jaffari@ljhcasey.com.au

LJ Hooker Hampton Park
(03) 9702 8388

rejuvenate. Additionally, at the rear of the property, a versatile one-bedroom bungalow with a convenient kitchenette and bathroom presents endless possibilities - whether accommodating extended family members, hosting guests, or generating rental income.

Indulge in premium comfort with ducted heating, evaporative cooling, air conditioning, a spa bath in the main bathroom, and a cozy fireplace ensuring year-round climate control. Recent upgrades such as new carpets and solar panels enhance the appeal and efficiency of this already remarkable home. Parking is a breeze with a remote double garage offering rear access, complemented by ample space to accommodate up to 8 vehicles, ensuring plenty of room for your prized possessions, be it cars, boats, caravans, or trucks.

Step outside to your own private oasis - a sprawling covered pergola overlooking the meticulously landscaped backyard, providing the perfect setting for outdoor entertainment or simply relaxing in the sunshine. With a garden shed and under house storage, there's no shortage of space for all your storage needs.

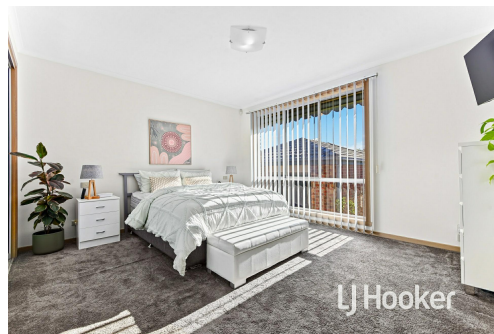
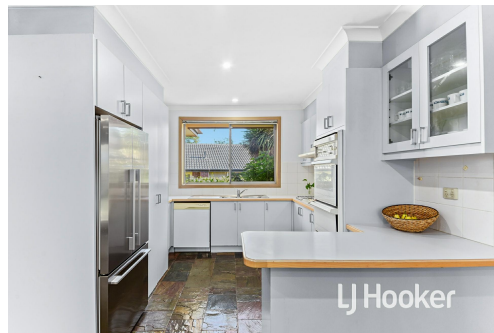
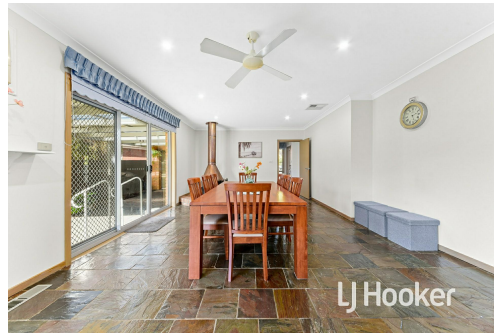
Don't miss the opportunity to make this exceptional property your forever home. Embrace the lifestyle you've always dreamed of in this prestigious Rowville residence.

More About this Property

Property ID	47W3BFHE
Property Type	House
Land Area	907 m²
Including	Ensuite Air Conditioning Ducted Cooling Ducted Heating Evaporative Cooling Spa Fire Place Dishwasher Built-in-Robes Solar Panels Carpeted Close to Schools Close to Shops Close to Transport Close to shop Kitchenette

John Deo 0411 873 123
Director - Officer In Effective Control | john.deo@ljhcasey.com.au
Mohsen Jaffari 0421 451 974
Sales Agent | mohsen.jaffari@ljhcasey.com.au

LJ Hooker Hampton Park (03) 9702 8388
Shop 20, Hampton Park Shopping Centre, 166 Somerville Road, HAMPTON PARK VIC 3976
hamptonpark.ljhooker.com.au | john.deo@ljhcasey.com.au



Disclaimer: All information contained therein is gathered from relevant third parties sources. We cannot guarantee or give any warranty about the information provided. Interested parties must rely solely on their own enquiries.

LJ Hooker Hampton Park
(03) 9702 8388



This drawing is for illustrative purposes only and while every effort has been made to maintain accuracy, prospective purchasers should check all information

