



169 Morris Road, Rothwell

Modern Family Living in the Heart of Rothwell!

Discover the perfect blend of style, space, and functionality in this newly built family home, ideally positioned in the heart of Rothwell. Offering four generously sized bedrooms, two beautifully appointed bathrooms, and a double car garage, this property has been thoughtfully designed to provide the ultimate in modern living.

From the moment you step inside, you'll be greeted by a warm and inviting atmosphere that immediately feels like home. The open-plan living, dining, and kitchen area creates a seamless flow, perfect for both entertaining and everyday family life. The contemporary kitchen features quality finishes, ample storage, and modern appliances, making it the true heart of the home.

Each bedroom is spacious and light-filled, providing a peaceful retreat for every member of the family. The master suite comes complete with a private ensuite and walk-in wardrobe, offering a touch of luxury and privacy. The remaining bedrooms are serviced by a stylish central bathroom, ideal for guests or children.

Outside, the property continues to impress with a low-maintenance yard and outdoor entertaining area, the perfect place to relax or host

4 2 2

FOR SALE

For Sale

VIEW

By Appointment

AGENTS

Danny Mailer

0439 710 862

danny@ljhookerredcliffe.com.au

Ellen Sommerlad

0401 545 155

esommerlad.redcliffe@ljh.com.au

AGENCY

LJ Hooker Redcliffe

(07) 3897 5000

All information contained therein is gathered from relevant third parties sources.
We cannot guarantee or give any warranty about the information provided.
Interested parties must rely solely on their own enquiries.



family gatherings. The home's thoughtful design ensures comfort, convenience, and easy living at every turn.

Located just minutes from local shops, quality schools, parks, and public transport, this home offers unbeatable convenience. Whether you're a first-home buyer, growing family, or investor looking for a solid opportunity in a sought-after area, this stunning Rothwell residence has something for everyone.

With nothing left to do but move in and enjoy, this newly built property represents modern living at its finest.

Don't miss your chance to secure this exceptional home in one of Rothwell's most convenient locations, it's the perfect place to call your own.

MORE DETAILS

Property ID	209HGWZ
Property Type	House
Land Area	407 m2
Including	Air Conditioning
	Dishwasher
	Outdoor Entertaining
	Built-in-Robes
	Secure Parking
	Fully Fenced
	Remote Garage
	Liveability

Danny Mailer 0439 710 862

Principal | danny@ljhookerredcliffe.com.au

Ellen Sommerlad 0401 545 155

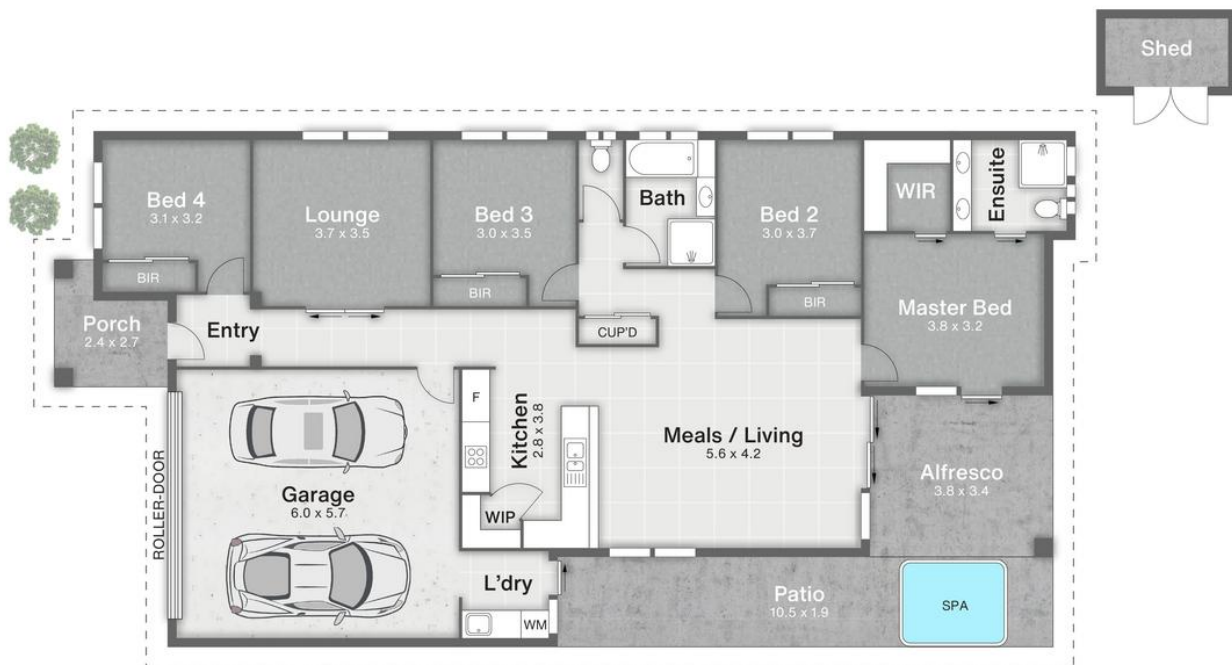
| esommerlad.redcliffe@ljh.com.au

LJ Hooker Redcliffe (07) 3897 5000

45 Redcliffe Parade, REDCLIFFE QLD 4020

redcliffe.ljhooker.com.au | reception@ljhookerredcliffe.com.au





169 Morris Road **ROTHWELL**

4 | 2 | 2 | 198m²

LJ Hooker

All dimensions are approximate; they are subject to errors and inaccuracies and no liability will be accepted.
Plans are shown for marketing purposes only.

All information contained therein is gathered from relevant third parties sources.
We cannot guarantee or give any warranty about the information provided.
Interested parties must rely solely on their own enquiries.

LJ Hooker