



LJ Hooker
Adelaide Metro



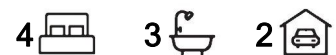
Rostrevor, 7 Cortlyne Road

Nurtured by Nature: A Family Sanctuary in Rostrevor

Greg Nicholls of LJ Hooker Adelaide Metro welcomes you this stunning home, on the cusp of beautiful Black Hill Conservation Park and Morialta Falls. The design thoughtfully respects everything there is to love about Rostrevor - blending near city lifestyle with access to the Adelaide Hills.

This gorgeous four-bedroom family residence, proudly occupies a Torrens title corner block that couldn't be better located. Happy family living soars to new levels when your beautiful 2025 home sits within minutes to Morialta Secondary College, Stradbroke Primary School and Newton Village Shopping Centre.

Step straight into a relaxed family lifestyle where light-filled living spaces, three fully tiled deluxe bathrooms and two sublime master suites offer a sense of effortless luxury. Spread across both levels, each space basks in natural light and a tranquil, sparkling ambiance.



For Sale
Please Call

View
ljhooker.com.au/2D6DFDZ

Contact
Greg Nicholls
0478 131 807
greg.nicholls@ljhadelaidemetro.com.au



LJ Hooker St Peters
(08) 8362 8008

Disclaimer: All information contained therein is gathered from relevant third parties sources. We cannot guarantee or give any warranty about the information provided. Interested parties must rely solely on their own enquiries.

This impeccably designed residence showcases luxury at every turn. Thoughtfully curated with high-end finishes, the home features sleek timber flooring, premium Bosch appliances and striking Calacatta stone benchtops throughout. As evening falls, impress your guests by opening the expansive bi-folding doors, effortlessly extending living space and elevating your entertaining experience to the next level!

Modern family living awaits:

- Gorgeous curb appeal, in perfect harmony with its surroundings
- Tinted windows to front
- Generous living areas - both with TV points, for added entertainment
- Open plan living with bi-folding doors, instantly adding to living space
- Powerful Fujitsu 14kW R/C air-conditioning with sleek linear vents to living area
- Tiled alfresco, wonderfully framed by lush green lawns
- Ground level guest bedroom with built-in robe flowing to a luxe ensuite with dual vanity, frameless shower screen, recessed wall and LED mirrors with defog function.
- Large upstairs master with walk-in robe and decadent couple's ensuite
- 3rd and 4th upstairs bedrooms with built-in robes
- Huge family/guest bathroom with freestanding bath, shower and niches
- 40mm Calacatta Mist stone kitchen benchtops and 700mm x 700mm stone splashback
- Huge kitchen breakfast island, feature pendant lighting and recessed double sink
- Full Bosch appliances - dishwasher, 900mm five-burner gas cooktop and dual oven
- Walk-through pantry with extensive storage
- Ground level guest powder room
- Modern laundry with excellent storage
- Soft close linen cupboards
- Double garage (5.9m x 5.7m) with internal and external entry to the garden
- Additional driveway parking for two vehicles
- Exposed aggregate concrete drive and pathways
- Beautifully landscaped front and rear gardens
- First home buyer are eligible for stamp duty relief and first home owner grant

This is more than just a home - it's a statement of style, space, and serenity in one of Adelaide's most sought-after family-friendly pockets.

Purchasing this property as an investment? Talk with Kirsty Clark from our PM team and see why our Property Management department is #1 amongst all the LJ Hooker offices Worldwide.

****** All information provided has been obtained from sources we believe to be accurate, however, we cannot guarantee the information is accurate and we accept no liability for any errors or omissions (including but not limited to a property's land size, floor plans and size, building age and condition). Interested parties should make their own enquiries and obtain their own legal advice.

RLA 61345 RLA 282965 RLA 231015



LJ Hooker St Peters
(08) 8362 8008

Disclaimer: All information contained therein is gathered from relevant third parties sources. We cannot guarantee or give any warranty about the information provided. Interested parties must rely solely on their own enquiries.

More About this Property

Property ID	2D6DFDZ
Property Type	House

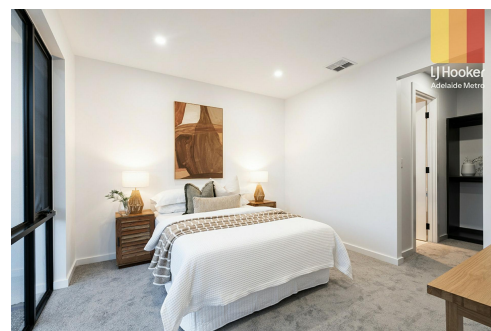
Greg Nicholls 0478 131 807

Sales Consultant | greg.nicholls@ljhadelaidemetro.com.au

LJ Hooker St Peters (08) 8362 8008

2a Portrush Road, PAYNEHAM SA 5070

stpeters.ljhooker.com.au | stpeters@ljhadelaidemetro.com.au



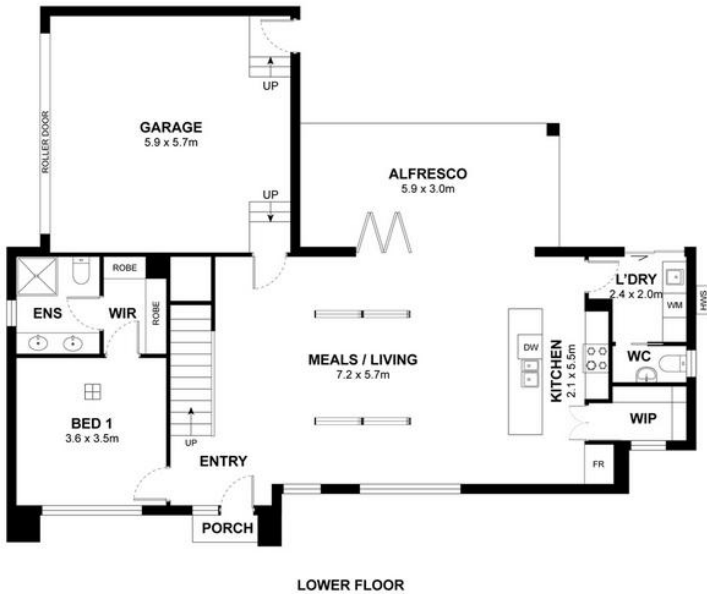
Disclaimer: All information contained therein is gathered from relevant third parties sources. We cannot guarantee or give any warranty about the information provided. Interested parties must rely solely on their own enquiries.

LJ Hooker St Peters
(08) 8362 8008

- ☐ Ground Floor Living – 90.1m²
- ☐ First Floor Living – 88.4m²
- ☐ Garage – 33.6m²
- ☐ Alfresco – 17.7m²

☐ Total – 229.8m²

Measurements are approximate



7 Cortlyne Road, Rostrevor, SA 5073

Disclaimer: The information & figures obtained within this document has been compiled from information provided by vendor & sources that we believe are reliable. No warranty is given to their accuracy & all figures are subject to change without notice.