

Roseville, 25/5-17 Pacific Highway

Modern Apartment with Private North-Facing Courtyard

A one-bedder like no other, this unique garden apartment exudes a house-like feel with its generous floor plan, indoor/outdoor flow and private sunny courtyard. Positioned for convenience, footsteps to buses and just a short stroll to charming Roseville village shops, cafes and rail. Chatswood's world-class shopping, dining and entertainment is within a five minute drive or one train stop.

Enjoy exceptional outdoor entertaining in the north-facing courtyard, featuring a covered patio and landscaped garden accessible from both the living room and bedroom. The courtyard is fully enclosed with a fence and lockable gate, offering private and secure access.

The apartment includes a generously sized bedroom with a large mirrored built-in wardrobe, a modern bathroom with separate bath and shower, a separate toilet and a sleek granite kitchen equipped with stainless steel appliances. Additional features include



For Sale
Please Call

View
l.jhooker.com.au/20YKF6A

Contact
Kerrie Robertson
0414 495 896
krobertson@l.jhookerlanecove.com

Stewart Kirkby
0418 672 566
skirkby@l.jhookerlanecove.com



Disclaimer: All information contained therein is gathered from relevant third parties sources. We cannot guarantee or give any warranty about the information provided. Interested parties must rely solely on their own enquiries.

LJ Hooker Lane Cove
(02) 9428 1877

spacious open-plan living, an internal laundry, ample storage and secure undercover parking.

Perfect as a first home or a solid investment opportunity!

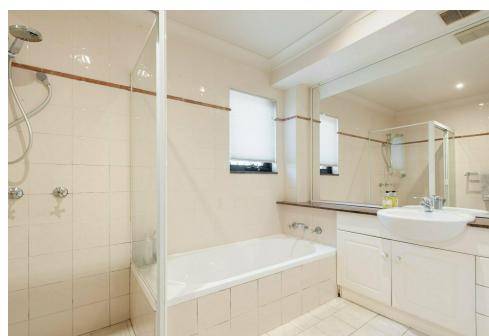
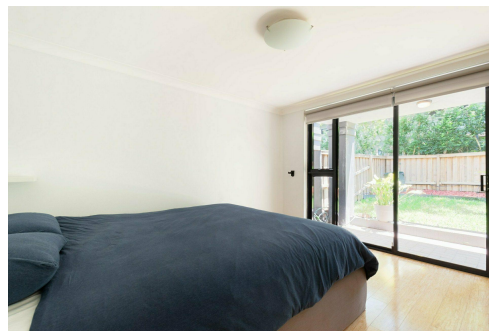
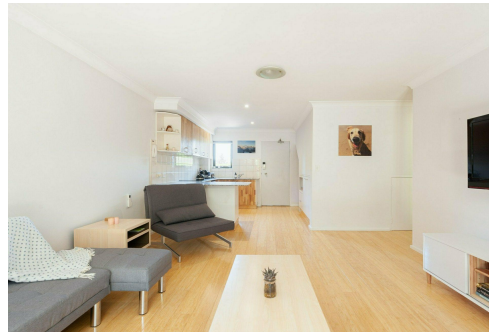
(Plenty of visitor parking available. Entry via Boundary Road - approach from Pacific Highway and take the first driveway immediately on the left.)

More About this Property

Property ID	20YKF6A
Property Type	Unit

Kerrie Robertson 0414 495 896
Senior Sales Agent | krobertson@ljhookerlanecove.com
Stewart Kirkby 0418 672 566
Licensee & Principal | skirkby@ljhookerlanecove.com

LJ Hooker Lane Cove (02) 9428 1877
113 Longueville Road, LANE COVE NSW 2066
lanecove.ljhooker.com.au | lanecove@ljhlc.com.au



Disclaimer: All information contained therein is gathered from relevant third parties sources. We cannot guarantee or give any warranty about the information provided. Interested parties must rely solely on their own enquiries.

LJ Hooker Lane Cove
(02) 9428 1877

