
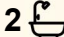
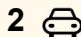


20 King Edward Street, Roseville

4  2  2 

Timeless Federation Elegance Meets Modern Family Living in a Peaceful Cul-de-Sac

FOR SALE
Contact Agent

VIEW
By Appointment

AGENTS
Irene Lee
0420 884 932
irene.lee@ljhookergordon.com.au

AGENCY
LJ Hooker Gordon
(02) 9496 8000

Nestled at the end of a tightly held cul-de-sac, this captivating Federation residence delivers a rare fusion of classic charm, generous space, and contemporary comfort in one of Roseville's most desirable enclaves.

From the moment you arrive, the home makes a lasting impression. Soaring 3.5m ornate ceilings, rich timber floors, and exquisite period detailing create an atmosphere of warmth, character, and understated sophistication. Beautifully updated to meet the demands of modern family life, the home offers a seamless balance of classic appeal and everyday functionality.

Designed with growing families in mind, the flexible floorplan reveals four oversized bedrooms—each with custom built-ins—alongside a private master retreat complete with walk-in robe, ensuite, and its own fireplace for added luxury. A versatile fifth bedroom or home office provides the perfect solution for remote work or guest accommodation.

All information contained therein is gathered from relevant third parties sources. We cannot guarantee or give any warranty about the information provided. Interested parties must rely solely on their own enquiries.

 **LJ Hooker**

At its heart, the home showcases a classic hardwood kitchen, thoughtfully appointed with a central island and quality European appliances. Flowing effortlessly into expansive living, dining, and family zones, it creates an inviting hub for both relaxed living and memorable entertaining.

Step outside to discover a private, level garden sanctuary—ideal for children to play, weekend gatherings, or simply unwinding in complete peace. The covered alfresco area enhances year-round enjoyment, seamlessly extending the living space outdoors.

Additional features include stylishly renovated bathrooms (main with bathtub), ducted air conditioning with Venti's system for year-round comfort, a separate laundry, and a secure double garage with remote access.

Perfectly positioned just moments from quality schools, village shops, transport, and the vibrant dining precinct of Chatswood, this exceptional home offers the ultimate lifestyle of convenience without compromising tranquility.

A rare opportunity to secure a refined Federation classic in a premier location—this is Roseville living at its absolute best.

Key Features:

- Grand double brick Federation home with timeless street appeal
 - Soaring 3.5m ornate ceilings and polished timber floors throughout
 - Luxurious master retreat with walk-in robe, ensuite, and fireplace
 - Four spacious bedrooms with custom built-in wardrobes
 - Flexible fifth bedroom, guest suite, or dedicated home office
 - Elegant renovated bathrooms, main with bathtub
 - Ducted air conditioning with Venti's system
 - Expansive open-plan living flowing to covered alfresco entertaining
 - Classic hardwood kitchen with island bench & European appliances
 - Secure double garage with remote automatic access
 - Level, landscaped gardens—perfect for families and entertaining
 - Easy access to schools, shops, transport, and Chatswood dining precinct
-
- Agent Interest

DISCLAIMER: All information contained herein is gathered from sources we believe to be reliable. We have no reason to doubt its accuracy; however, we cannot guarantee it. This information is not to be used in formalising any decision nor relied upon by a third party without the expressed written permission of LJ Hooker Gordon.

MORE DETAILS

Property ID	TC8HJX
Property Type	House
Land Area	724 m2
Including	Toilets (2)
	Dishwasher
	Built-in-Robes
	Secure Parking

Irene Lee 0420 884 932

Sales Executive | irene.lee@ljhookergordon.com.au

LJ Hooker Gordon (02) 9496 8000

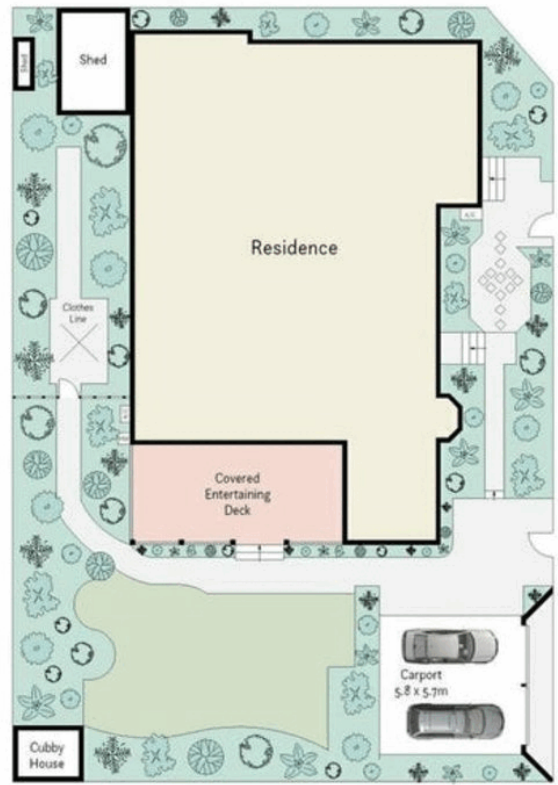
Shop 1, 777-779 Pacific Highway, GORDON NSW 2072
gordon.ljhooker.com.au | reception@ljhookergordon.com.au



All information contained therein is gathered from relevant third parties sources.
We cannot guarantee or give any warranty about the information provided.
Interested parties must rely solely on their own enquiries.



Ground Floor



Site Plan (Not to Scale)

Internal : 231m²



20 KING EDWARD STREET ROSEVILLE

Disclaimer: This plan is provided as an indicative representation of the layout only. No liability is accepted by the agency or vendor on its accuracy. Interested parties should make their own enquiries. Not to scale.

All information contained therein is gathered from relevant third parties sources. We cannot guarantee or give any warranty about the information provided. Interested parties must rely solely on their own enquiries.