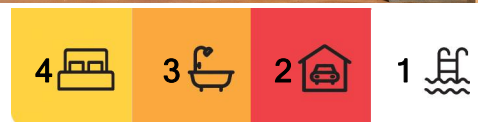


Roseville, 16 Spearman Street

Blue-Ribbon Family Abode in a Quiet East Side Pocket

Spoil your family with this exquisite residence nestled in a coveted blue-ribbon East side location, where timeless elegance meets contemporary comfort. This classic full brick home boasts a perfect blend of traditional charm and modern sophistication, offering a relaxed yet refined lifestyle which has been enjoyed by the current family for over 24 years.

The elegant home is embraced by meticulously landscaped gardens, providing a picturesque setting for this graceful abode. A level lawn at the front and rear of the house enhances the overall appeal, while the interiors are bathed in natural light, radiating character and charm.



For Sale

Sold Under The Hammer \$4,275,000

View

ljhooker.com.au/SCBHJX

Contact

Jing Peng

0424 262 673

jingpeng@ljhookergordon.com.au

Minette Hodgson

0415 055 540

mhodgson@ljhookergordon.com.au



Disclaimer: All information contained therein is gathered from relevant third parties sources.

We cannot guarantee or give any warranty about the information provided. Interested parties must rely solely on their own enquiries.

LJ Hooker Gordon
(02) 9496 8000

The floorplan of this residence is designed for versatility, with multiple living spaces to accommodate various needs. The formal lounge exudes an air of sophistication, complemented by informal living and dining areas that seamlessly flow to a generously sized covered outdoor entertainer's deck. From here, you can overlook the sparkling pool and a child-friendly lawn, creating the perfect setting for gatherings and relaxation.

Boasting four bedrooms, each equipped with built-in wardrobes and three well-appointed bathrooms, this home offers both practicality and luxury. The master bedroom provides for a private retreat, offering a sanctuary of comfort and style.

The location of this property is truly unparalleled, with a plethora of amenities just minutes away. High-end shopping and fine dining options in Chatswood CBD are at your fingertips, ensuring a lifestyle of convenience and luxury. For families, the proximity to esteemed educational institutions is a significant advantage – a quick walk will take you to Roseville College, while Roseville Train Station is just a 10-minute walk away.

This residence encapsulates the epitome of sophisticated living in a prime East side locale, where tradition meets contemporary allure. Don't miss the opportunity to make this elegant property your home.

Property features:

- North and East aspects, sought-after blue-ribbon location
- Gorgeous street appeal and splendid front veranda
- Tessellated tiles, high ceilings, leadlight windows, fireplace
- Formal lounge, spacious dining and sunny family living
- Provincial style country kitchen with separate laundry
- Four bedrooms, three bathrooms, master with en-suite
- Large, covered entertainer's deck overlooking the pool
- Beautiful established gardens and child friendly yard
- Double tandem car parking garage plus storage
- Lifestyle convenience, positioned close to elite schools & amenities

Location benefits:

- To Chatswood Chase 750m approx. walk
- To Beauchamp Park 400m approx. walk
- To Roseville College 400m approx. walk
- To Roseville Station 850m approx. walk
- Zoned for Willoughby Girls High
- Easy access to other leading schools

DISCLAIMER: All information contained herein is gathered from sources that we believe reliable. We have no reason to doubt its accuracy, however we cannot guarantee it. This information is not to be used in formalising any decision nor used by a third party without the expressed written permission of LJ Hooker Gordon.



LJ Hooker Gordon
(02) 9496 8000

Disclaimer: All information contained therein is gathered from relevant third parties sources. We cannot guarantee or give any warranty about the information provided. Interested parties must rely solely on their own enquiries.

More About this Property

Property ID	SCBHJX
Property Type	House
Land Area	758.8 m ²
Including	Toilets (3) Pool

Jing Peng 0424 262 673

Principal | jingpeng@ljhookergordon.com.au

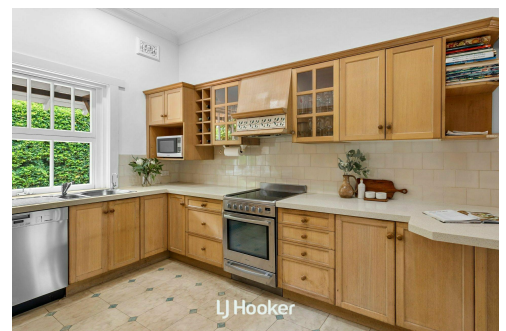
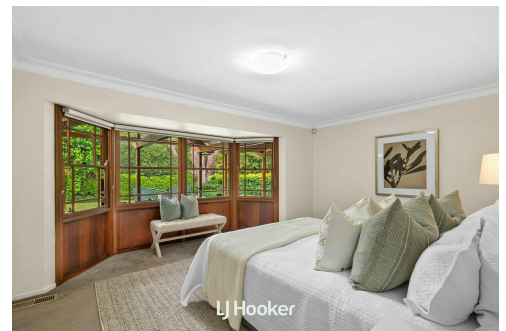
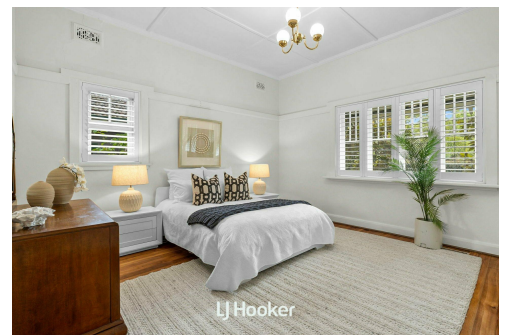
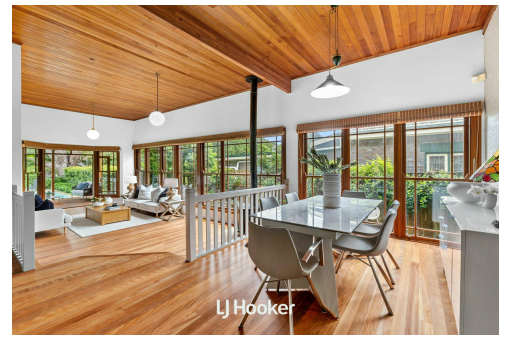
Minette Hodgson 0415 055 540

Sales Executive | mhodgson@ljhookergordon.com.au

LJ Hooker Gordon (02) 9496 8000

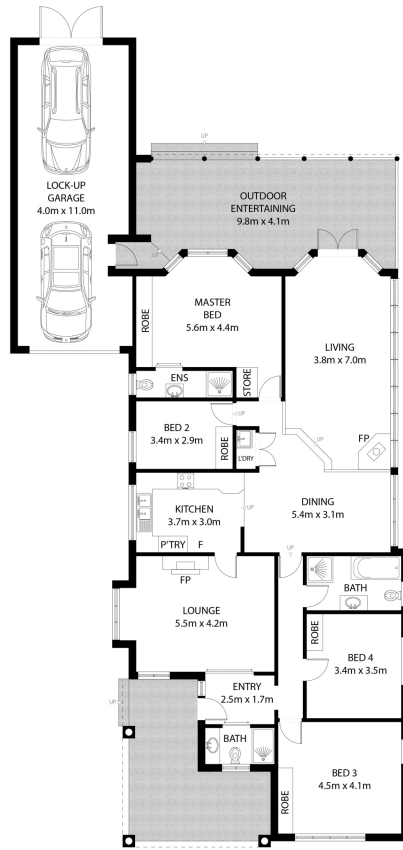
Shop 1, 777-779 Pacific Highway, GORDON NSW 2072

gordon.ljhooker.com.au | reception@ljhookergordon.com.au



LJ Hooker Gordon
(02) 9496 8000

Disclaimer: All information contained therein is gathered from relevant third parties sources. We cannot guarantee or give any warranty about the information provided. Interested parties must rely solely on their own enquiries.



GROUND FLOOR



SITE PLAN

TOTAL INTERNAL AREA 236m² APPROX
TOTAL LAND AREA 758.8m² APPROX

16 Spearman Street, Roseville

Disclaimer: Plans shown are for presentation purposes and are not part of any legal document. All measurements and figures are approximate.

 LJ Hooker