

B405/1-3 Corona Avenue, Roseville

## Roseville Prestigious Brand New Three-Bedroom Residence - Ready to Move in!

Positioned in one of Roseville's most sought-after enclaves, this impeccably appointed three-bedroom apartment offers an exceptional blend of luxury, space, and effortless sophistication. Designed for refined living, the residence showcases generous proportions, high ceilings, and seamless indoor-outdoor flow. The expansive open-plan living and dining areas are bathed in natural light, extending to a private balcony ideal for relaxed entertaining or quiet evenings overlooking the leafy surrounds.

The gourmet kitchen is a statement of quality, featuring premium appliances, sleek stone benchtops, and custom cabinetry—perfect for both everyday living and hosting with ease. Three generously sized bedrooms provide comfort and privacy, with the master suite offering a serene retreat complete with a stylish ensuite and built-in wardrobes.

Set within a prestigious building, residents enjoy secure parking, lift access, and a sense of exclusivity rarely found. Moments from Roseville Village, transport links, elite schools, and tranquil parklands, this residence delivers an enviable lifestyle defined by convenience

3  2  2 

**FOR SALE**  
Contact Agent

**VIEW**  
By Appointment

### AGENTS

Irene Lee  
0420 884 932  
irene.lee@ljhookergordon.com.au

### AGENCY

LJ Hooker Gordon  
(02) 9496 8000

All information contained therein is gathered from relevant third parties sources.  
We cannot guarantee or give any warranty about the information provided.  
Interested parties must rely solely on their own enquiries.

 **LJ Hooker**

and elegance.

A rare opportunity to secure luxury living in one of the North Shore's most distinguished suburbs.

DISCLAIMER: All information contained herein is gathered from sources that we believe reliable. We have no reason to doubt its accuracy; however, we cannot guarantee it. This information is not to be used in formalising any decision nor used by a third party without the expressed written permission of LJ Hooker Gordon.

### MORE DETAILS

Property ID	T8GHJX
Property Type	Apartment
Including	Toilets (2)

**Irene Lee 0420 884 932**

Sales Executive | [irene.lee@ljhookergordon.com.au](mailto:irene.lee@ljhookergordon.com.au)

**LJ Hooker Gordon (02) 9496 8000**

Shop 1, 777-779 Pacific Highway, GORDON NSW 2072  
[gordon.ljhooker.com.au](http://gordon.ljhooker.com.au) | [reception@ljhookergordon.com.au](mailto:reception@ljhookergordon.com.au)



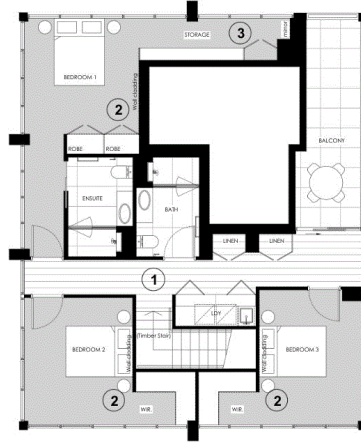
All information contained therein is gathered from relevant third parties sources.  
We cannot guarantee or give any warranty about the information provided.  
Interested parties must rely solely on their own enquiries.



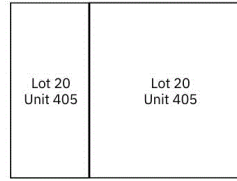
- 1. Timber Floor 3
- 2. Wall Cladding, Joinery Doors & WIR Panels 2.5
- 3. Storage 2



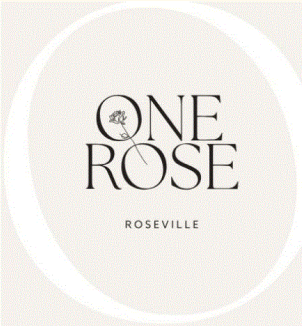
LEVEL FOUR



LEVEL FIVE



Disclaimer: Please note that this Floorplan is a guide only and was prepared prior to completion. The information contained herein is believed to be correct but is not guaranteed. Dimensions are approximate. Changes may be made during construction. All dimensions, areas, fittings and specifications may be subject to change without notice in accordance with the provisions of the contract of sale. The furniture depicted is not included with any sale. Prospective purchasers may rely on their own enquiries. Version 1, April 2022



APARTMENT 405

3 BED+STUDY

INTERNAL	163m <sup>2</sup>
EXTERNAL	30m <sup>2</sup>
TOTAL	193m <sup>2</sup>



LEVEL FIVE



LEVEL FOUR

onerose.com.au  
1800 168 188

All information contained therein is gathered from relevant third parties sources. We cannot guarantee or give any warranty about the information provided. Interested parties must rely solely on their own enquiries.

