

616/989-1015 Pacific Highway, Roseville

ANOTHER ONE SOLD BY IRENE IN SEYMOURS RESIDENCES!

Superior Private North-East Facing Penthouse in the heart of Roseville

This unique, secluded, north-east facing penthouse sits atop the prestigious Seymours Residences in Roseville, offering light-filled interiors, district views and exceptional privacy. Designed for refined, low-maintenance living, the three-bedroom home features high ceilings, floor-to-ceiling glazing, oak timber floors and a seamless open-plan layout flowing to a large, partially enclosed balcony for year-round entertaining. With premium Miele appliances, bespoke storage and three car spaces, it is ideal for discerning downsizers seeking tranquility, convenience and close proximity to Chatswood, transport and elite schools.

- Elegant north-east facing penthouse offering the privacy, outlook and light often missed when leaving a family home
- Generous proportions throughout, allowing you to downsize without sacrificing space or lifestyle
- Three spacious bedrooms providing flexibility for visiting family, grandchildren or a dedicated study
- High ceilings, oak timber flooring and floor-to-ceiling glass enhance the sense of openness and quality

All information contained therein is gathered from relevant third parties sources. We cannot guarantee or give any warranty about the information provided. Interested parties must rely solely on their own enquiries.

3 2 3

FOR SALE
Sold Prior to Auction!

AGENTS

Irene Lee
0420 884 932
irene.lee@ljhookergordon.com.au

AGENCY

LJ Hooker Gordon
(02) 9496 8000



- Expansive open-plan living flowing to a large, partially enclosed balcony ideal for entertaining year-round
- Beautifully appointed stone kitchen with Miele appliances for effortless everyday living
- Secure, lift-access building offering peace of mind and lock-up-and-leave convenience
- Rare three secure car spaces and two storage cages.
- Prestige Roseville address close to Chatswood, transport, dining and healthcare
- A refined, low-maintenance alternative to a large home — without compromise

Location benefits:

- Only 7 min approx. walk to Roseville Station
- Only 13 min approx. walk to Chatswood Station
- Bus 565 to Chatswood right at your doorstep
- Located in the sought after Willoughby Girls High catchment
- Easy access to other elite North Shore Schooling options

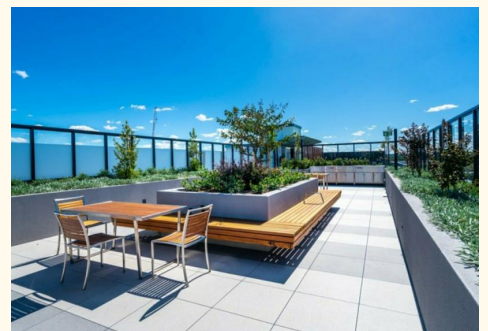
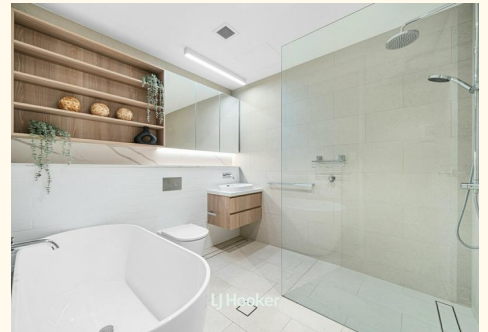
DISCLAIMER: All information contained herein is gathered from sources we believe to be reliable. We have no reason to doubt its accuracy; however, we cannot guarantee it. This information is not to be used in formalising any decision nor relied upon by a third party without the expressed written permission of LJ Hooker Gordon.

MORE DETAILS

Property ID	T7BHJX
Property Type	Apartment
Including	Toilets (3)
	Intercom
	Balcony
	Dishwasher
	Built-in-Robes
	Secure Parking

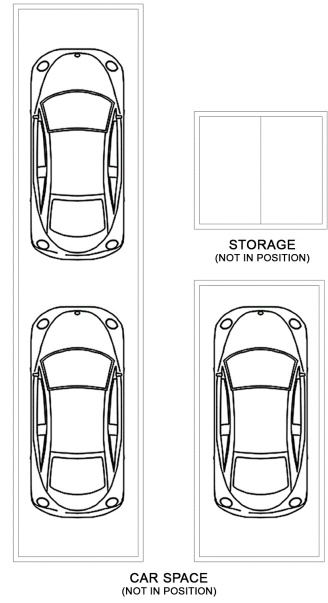
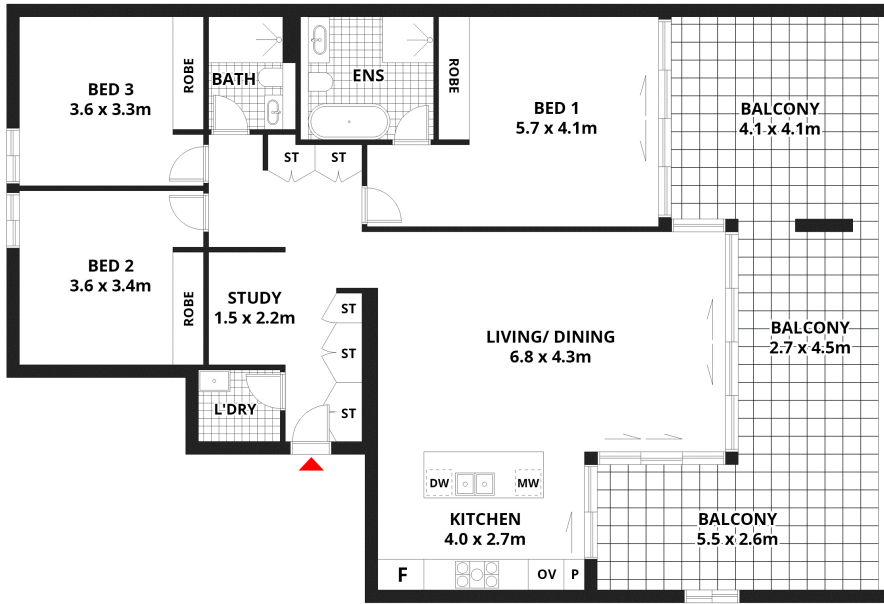
Irene Lee 0420 884 932
Sales Executive | irene.lee@ljhookergordon.com.au

LJ Hooker Gordon (02) 9496 8000
Shop 1, 777-779 Pacific Highway, GORDON NSW 2072
gordon.ljhooker.com.au | reception@ljhookergordon.com.au



616/989-1015 Pacific Highway, Roseville NSW 2069

Internal & Balcony	158m ² (Approx.)
Car space & Storage	45m ² (Approx.)
Total	203m² (Approx.)



Scale in metres. Dimensions are approximate. All information contained herein is gathered from sources we believe to be reliable, however we cannot guarantee its accuracy and interested persons should rely on their own enquiries.

LJ Hooker Gordon

All information contained therein is gathered from relevant third parties sources. We cannot guarantee or give any warranty about the information provided. Interested parties must rely solely on their own enquiries.

