

Roseville

Luxurious Spacious and New 2-Bedroom Apartment with Expansive Study in the Heart of Roseville

Welcome to your ideal living space! This beautifully appointed 2-bedroom, 2-bathroom apartment in the vibrant Roseville neighborhood offers the perfect combination of comfort, style, and versatility. The expansive floor plan includes a large study, making it perfect for those working from home, pursuing hobbies, or needing additional space for relaxation.

Features:

- Two Generously Sized Bedrooms: Each bedroom offers ample closet space and ceiling to floor windows, providing plenty of natural light and a peaceful retreat.
- Huge Study Room: The spacious study is perfect for remote work, a home office, or even a third bedroom. The possibilities are endless!
- Open-Concept Living Area: Enjoy a seamless flow between the living, dining, and kitchen



Disclaimer: All information contained therein is gathered from relevant third parties sources. We cannot guarantee or give any warranty about the information provided. Interested parties must rely solely on their own enquiries.

2

2

1

For Sale
Contact Agent

View
By Appointment

Contact
Irene Lee
0420 884 932
irene.lee@ljhookergordon.com.au

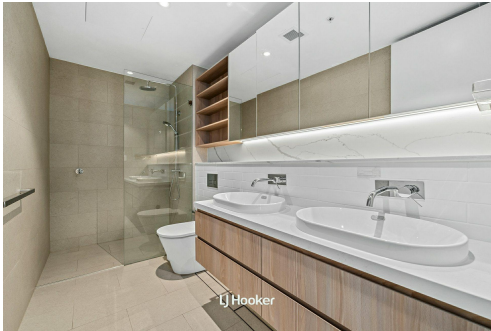
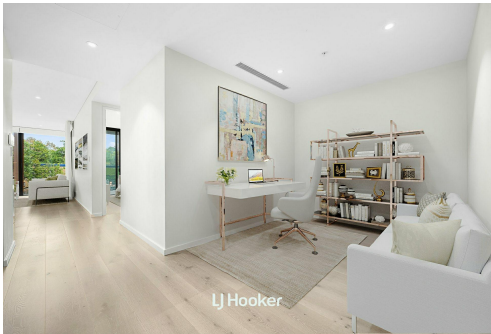
LJ Hooker Gordon
(02) 9496 8000

areas. Ideal for entertaining or simply relaxing with family and friends.

- Modern Kitchen: Equipped with stainless Miele appliances, sleek stone benchtops, and plenty of cabinet space, this kitchen is both functional and stylish.
- Convenient Location: Situated in the sought-after Roseville area, you'll be close to Chatswood Shopping, dining, parks, and excellent schools, offering the perfect balance of suburban tranquility and urban convenience.
- Private Balcony or Patio: Enjoy outdoor living with your own private space to unwind and take in the views of the leafy Roseville and Chatswood skyline.

Whether you're looking for a comfortable family home or a spacious work-from-home environment, this apartment has it all. Contact us today to schedule a tour and see for yourself how this apartment can be your next perfect home!

DISCLAIMER: All information contained herein is gathered from sources that we believe reliable. We have no reason to doubt its accuracy, however we cannot guarantee it. This information is not to be used in formalising any decision nor used by a third party without the expressed written permission of LJ Hooker Gordon.



More About this Property

| | |
|---------------|----------------------|
| Property ID | SXDHJX |
| Property Type | Apartment |
| Including | Study Toilets (2) |

Irene Lee 0420 884 932
Sales Executive | irene.lee@ljhookergordon.com.au

LJ Hooker Gordon (02) 9496 8000
Shop 1, 777-779 Pacific Highway, GORDON NSW 2072
gordon.ljhooker.com.au | reception@ljhookergordon.com.au

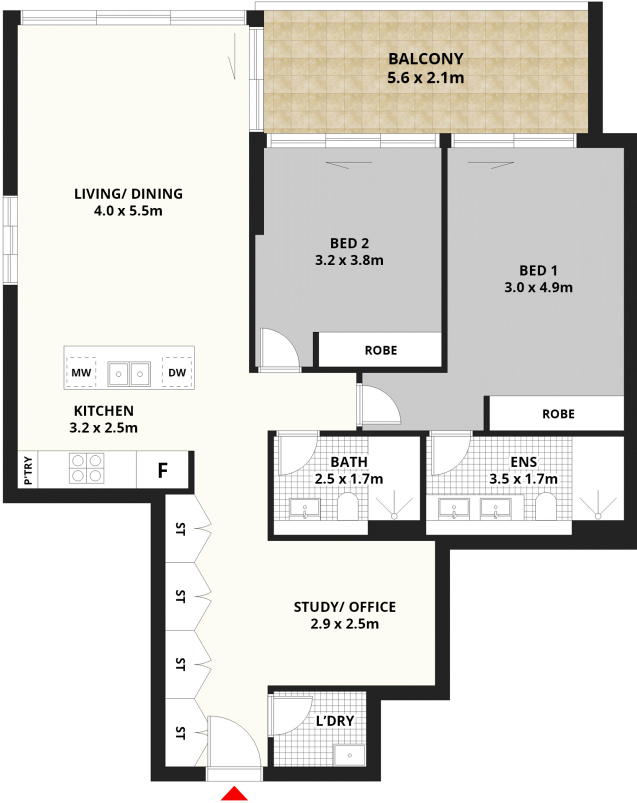


Disclaimer: All information contained therein is gathered from relevant third parties sources. We cannot guarantee or give any warranty about the information provided. Interested parties must rely solely on their own enquiries.

LJ Hooker Gordon
(02) 9496 8000

211/989-1015 Pacific Highway, Roseville, NSW 2069

| | |
|---------------------|-----------------------------|
| Internal & Balcony | 105m ² (Approx.) |
| Car space & Storage | 15m ² (Approx.) |
| Total | 120m ² (Approx.) |



SECURE CAR SPACES
(NOT IN POSITION)



Scale in metres, Dimensions are approximate. All information contained herein is gathered from sources we believe to be reliable, however we cannot guarantee its accuracy and interested persons should rely on their own enquiries.

LJ Hooker Gordon