

18 Alroy Court, Rosetta

Rosetta - Nothing to Fix. Nothing to Hide. Just Move In.

Ant's "Fluff-Free" Description...

If you're chasing an immaculately presented, low-maintenance home in a quiet Rosetta cul-de-sac - congratulations, you can stop scrolling.

This one has been beautifully maintained from front fence to back shed, with manicured gardens, spotless interiors and the kind of presentation that tells you the owners actually cared.

Brick veneer construction, single-level living, three bedrooms and a layout that works without wasted space or weird decisions.

The living room is genuinely generous, the kitchen and dining are sensibly separate, and the covered outdoor area looks out to established, well-kept gardens - not bare Colorbond or next door's "work in progress".

Set on a 554m2 block, the backyard is tidy, usable and refreshingly low drama, with a lock-up garage, additional sheds and nothing screaming for attention or money.

3 1 4

FOR SALE
Offers Over \$695,000

VIEW
By Appointment

AGENTS
Ant Manton
0408 621 856
antmanton@ljhookerpinnacle.com

Anna Holmes
(03) 6272 8177
aholmes@ljhpinnacle.com.au

AGENCY
LJ Hooker Pinnacle Property
(03) 6272 8177

All information contained therein is gathered from relevant third parties sources.
We cannot guarantee or give any warranty about the information provided.
Interested parties must rely solely on their own enquiries.

LJ Hooker

Nothing to fix.

Nothing to hide.

Just a home that's been looked after properly - and it shows.

THE MAIN POINTS - No Fluff Allowed...

- Immaculately presented brick veneer home
- Beautifully maintained gardens front and rear
- Spotless interiors with excellent overall presentation
- Single-level living - easy, practical and future-friendly
- Three bedrooms, all with built-in robes
- Generous living room with great natural light
- Separate kitchen and dining - sensible and functional
- Well-kept kitchen with dishwasher and pantry
- Bathroom with separate toilet - morning traffic solved
- Dedicated laundry - not a cupboard pretending
- Covered outdoor entertaining overlooking established gardens

Lock-up garage under the main roof

- Additional garden shed plus storage shed
- 554m² block - neat, usable and easy-care
- Quiet cul-de-sac position - and a playground directly opposite
- Owner-occupied and very clearly well cared for

This stunner can't last long - so don't hesitate!

Onwards and upwards to your Rosetta beauty!

"I Work Harder - It's THAT Simple!"

Disclaimer: The information contained herein has been supplied to us and we have no reason to doubt its accuracy, however, cannot guarantee it. Accordingly, all interested parties should make their own enquiries to verify this information.

MORE DETAILS

Property ID	JVJ1F
Property Type	House
House Size	114 m2
Land Area	554 m2
Including	Air Conditioning
	Toilets (1)
	Courtyard
	Dishwasher
	Outdoor Entertaining
	Workshop
	Built-in-Robes
	Secure Parking
	Fully Fenced
	Remote Garage

Ant Manton 0408 621 856

Real Estate Agent | antmanton@ljhookerpinnacle.com

Anna Holmes (03) 6272 8177

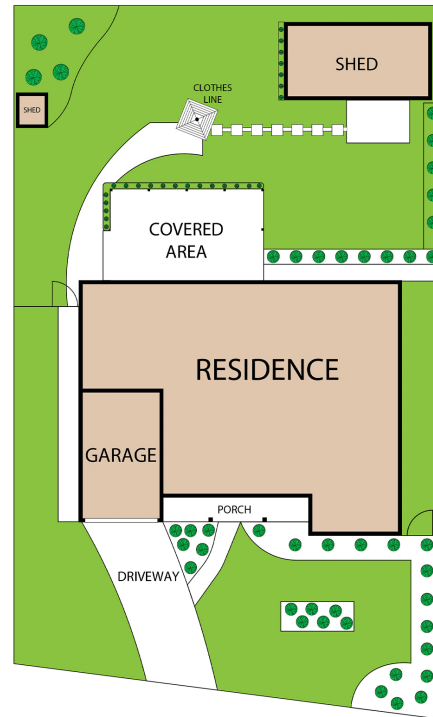
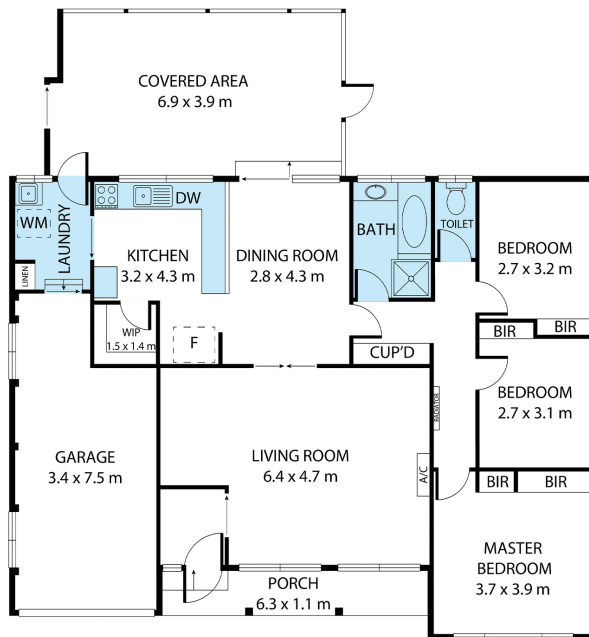
Executive Assistant to Ant Manton | aholmes@ljhpinnacle.com.au

LJ Hooker Pinnacle Property (03) 6272 8177

402 Main Road, GLENORCHY TAS 7010

pinnacleproperty.ljhooker.com.au | hello@ljhpinnacle.com.au





18 Alroy Court, Rosetta

House area: 114 sqm

Areas and dimensions are approximate and therefore this floor plan should only be used for illustrative purposes.

Real Estate Marketing by nextcreative.com.au

