

Rosenthal Heights, 9 Keith Mitchell Drive

STUNNINGLY COMPLETE, LANDSCAPED, GREAT SHED ALSO HERE FOR YOU...

You will be impressed, as I was when entering this superior five year old home.

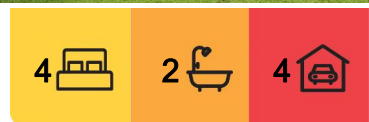
For those who demand a high-quality, as-new home, established well-planned landscape, but do not favour the building process, may I suggest you call and view this beautiful place today, as you will enjoy the:

- * Higher ceilings
- * Master Bedroom with Robe Room and beautiful ensuite
- * Four Bedrooms in all, all with excellent robe space
- * Wide Foyer opening to a gourmet Kitchen, spacious Butler Pantry
- * Two Lounge Living rooms, expansive Dining area, all flowing out to those views and rear deck
- * We have an excellent Laundry, with a full wall of storage
- * Office space off hallway with doors, so you can shut all away as you need
- * The home is surrounded by aggregate concrete pathway, has two full concrete driveways



Disclaimer: All information contained therein is gathered from relevant third parties sources.

We cannot guarantee or give any warranty about the information provided. Interested parties must rely solely on their own enquiries.



For Sale
Please Call

View
ljhooker.com.au/M5FH85

Contact
Leanne Cameron
0438 852 188
leanne@ljhw.com.au

LJ Hooker Warwick
(07) 4661 8100

* Double remote garage on the residence, a four bay, high opening Shed on rear boundary

* Bathroom and Ensuite here are superb, designed and fitted out for easy clean, maximum style

There is so much to take in here, for those who can afford such a lifestyle. Due to a new Grandchild, Family time of life and work commitments, this lovely couple are making a sea change to Redcliffe to be nearer their loved ones.

Comfort plus here with a fully ducted, reverse cycle air conditioning, stylish ceiling fans, beautiful wide cushioned vinyl plank timber look flooring, tiled wet areas from floor to ceiling, quality carpet in all four bedrooms. This is one hell of a good home, holistically complete, ready for you to move right on in and enjoy life here, it is truly sanctuary living, a lifestyle we often dream to have for ourselves.

A light, bright, and airy home, opening to a well groomed landscape and rural outlook south from your living, kitchen and rear deck. Then out to an expansive, private, front northern courtyard.

Built well, for low maintenance, all the landscaping is complete, fully turfed as well. There is a second full concrete driveway to your high opening four bay shed, rain water tank and pressure pump.

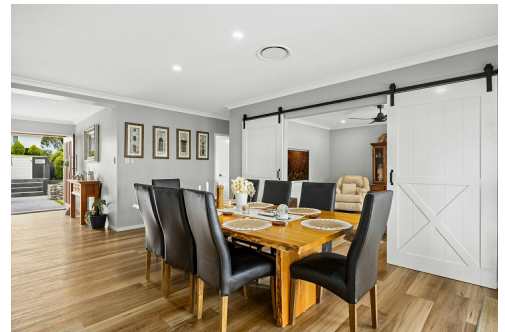
The property is fully and securely fenced, the front yard features a rendered block retainer wall and garden, aluminium slat features, personal gates on both sides of the aggregate driveway leading into the front court yard, residence main entrance and to the in house double remote garage.

More About this Property

Property ID	M5FH85
Property Type	House
Land Area	1500 m2
Including	Ensuite Air Conditioning Ducted Cooling Ducted Heating Toilets (2) Courtyard Deck Dishwasher Outdoor Entertaining Workshop Built-in-Robes Secure Parking Fully Fenced Remote Garage Grey Water System Water Tank The establishment is above our normal offering well manicured for low maintenance Vegetable Garden

Leanne Cameron 0438 852 188
Salesperson | leanne@ljhw.com.au

LJ Hooker Warwick (07) 4661 8100
Suite 2, 24 Palmerin Street, WARWICK QLD 4370
warwick.ljhooker.com.au | office@ljhw.com.au



LJ Hooker Warwick
(07) 4661 8100

Disclaimer: All information contained therein is gathered from relevant third parties sources. We cannot guarantee or give any warranty about the information provided. Interested parties must rely solely on their own enquiries.