



Rosehill, 8/46 Park Estate Road

Great First Home or Lock Up & Leave

Enjoy Space, Sun & Style - Without the Hard Work!

Do you want a tidy green space to enjoy but hate the hassle of mowing and garden maintenance?

Do you like the idea of a spacious home, but not the burden of owning a big section?

Are you tired of cleaning and managing a house with too many unused corners, yet still want decent-sized bedrooms?

Perhaps you've considered a townhouse, but the thought of houses packed closely together feels too cramped?

This home solves all those problems. It offers the ideal balance of comfort, space, and easy care living.

Built in 2016 with a freehold title, this well-presented home features open-plan, sun-filled living with seamless indoor-outdoor flow. The private courtyard provides a perfect place to



For Sale

Asking Price \$599,000

View

By Appointment

Contact

Kimberly Kim

021 941 101

kim@ljhsouth.co.nz

Kevin Ratnayake

021 216 6176

kevin@ljhsouth.co.nz



Disclaimer: All information contained therein is gathered from relevant third parties sources.

We cannot guarantee or give any warranty about the information provided. Interested parties must rely solely on their own enquiries.

LJ Hooker Southern Partners
09 298 4000

relax, while the modern fixtures and fittings add a touch of style that first home buyers and investors will love.

With an internal access garage and extra parking space, welcoming guests is easy. Plus, with all the new developments happening around Park Estate Road, you're sure to enjoy solid capital gains in the future.

Rental appraisal: \$550-\$590 per week - making this a smart choice for investors as well.

Come to our open homes or call Kimberly on 021 941 101 for more information.

ALL AGENTS/AGENCIES WELCOME

PLEASE NOTE: Specified floor and land area sizes have been obtained from sources such as Property Guru, Auckland Council (LIM) or Title documents. They have not been measured by the Salesperson or LJ Hooker Southern Partners - Southern Suburbs Realty Ltd. We recommend you seek your own independent legal advice if these sizes are material to your purchasing decision.

More About this Property

Property ID	DUJ19
Property Type	House
House Size	81 m2
Land Area	140 m2

Kimberly Kim 021 941 101

Licensed Salesperson | kim@ljhsouth.co.nz

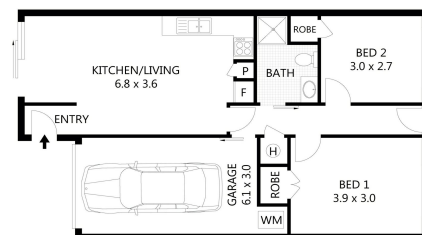
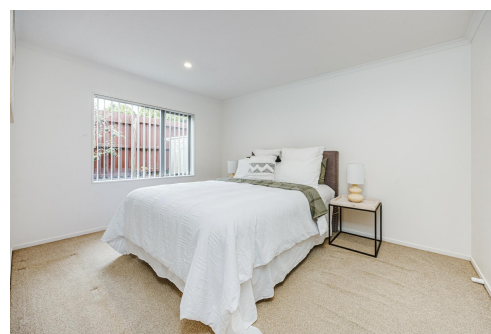
Kevin Ratnayake 021 216 6176

Licensed Salesperson | kevin@ljhsouth.co.nz

LJ Hooker Southern Partners 09 298 4000

319 Great South Road, PAPA KURA NZ

southernpartners.ljhooker.co.nz | enquiries@ljhsouth.co.nz



8/46 Park Estate Road, Papakura

Scale in metres. Indication only. Dimensions are approximate. All measurements are taken from the face of the wall. The information is provided for general information only and should not be relied upon for any specific purpose.



Disclaimer: All information contained therein is gathered from relevant third parties sources. We cannot guarantee or give any warranty about the information provided. Interested parties must rely solely on their own enquiries.

LJ Hooker Southern Partners
09 298 4000