



## Rosebery, 21 Flametree Circuit

Lush family home close to the shops.

\* Sold from our extensive data base prior to being advertised.

A quality home with lush tropical gardens and is perfect for a large family with the main bedroom set away from the other bedrooms, multiple living areas and a large covered entertaining area overlooking the pool. There is undercover parking for 2 cars and a third designated parking space, perfect for a boat or trailer. The bedrooms and living areas are all air-conditioned and the home is fully tiled through out.

Features include:

- \* Great location close to the Bakewell Woolies complex
- \* Established gardens creating a lush tropical feel
- \* Large undercover entertaining area with plunge pool
- \* Air-conditioned bedrooms and living areas.



**Disclaimer:** All information contained therein is gathered from relevant third parties sources. We cannot guarantee or give any warranty about the information provided. Interested parties must rely solely on their own enquiries.

**SOLD**

4

2

3

**For Sale**  
\$640,000

**View**  
[ljhooker.com.au/5DDFF2X](http://ljhooker.com.au/5DDFF2X)

**Contact**  
**Jennifer Wardell**  
0447 007 474  
[jwardell@ljhookerdarwin.com.au](mailto:jwardell@ljhookerdarwin.com.au)

**Robert Higgins**  
0418 184 754  
[rhiggins@ljhookerdarwin.com.au](mailto:rhiggins@ljhookerdarwin.com.au)

**LJ Hooker Darwin**  
**(08) 8924 0900**

\* Fully tiled throughout for easy cleaning

\* Off street parking for 3 vehicles

Only 50m as the crow flies or a short 2 min drive by car, this home has all of the convenience of the Bakewell Shopping center at its fingertips. With a modern Woolworths supermarket, specialty shops, fast food and a service station there is plenty of amenity nearby.

## More About this Property

<b>Property ID</b>	5DDFF2X
<b>Property Type</b>	House
<b>Land Area</b>	795 m2
<b>Including</b>	Ensuite Air Conditioning Dishwasher Built-in-Robes Fully Fenced

**Jennifer Wardell 0447 007 474**

Sales Representative | [jwardell@ljhookerdarwin.com.au](mailto:jwardell@ljhookerdarwin.com.au)

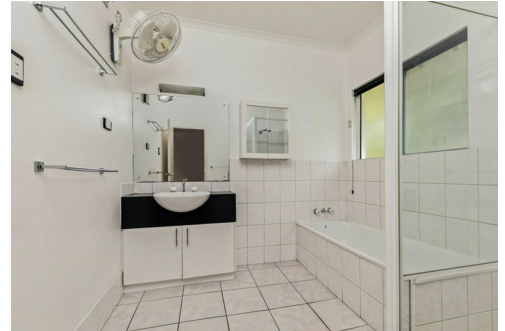
**Robert Higgins 0418 184 754**

Project Planning and Marketing | [rhiggins@ljhookerdarwin.com.au](mailto:rhiggins@ljhookerdarwin.com.au)

**LJ Hooker Darwin (08) 8924 0900**

Shop 1/25 Parap Road, PARAP NT 0820

[darwin.ljhooker.com.au](http://darwin.ljhooker.com.au) | [reception@ljhookerdarwin.com.au](mailto:reception@ljhookerdarwin.com.au)



**LJ Hooker Darwin**  
**(08) 8924 0900**

**Disclaimer:** All information contained therein is gathered from relevant third parties sources. We cannot guarantee or give any warranty about the information provided. Interested parties must rely solely on their own enquiries.

# 21 Flametree Circuit, Rosebery, NT, 0832

