



Romaine, 36 Manuka Drive

SET TO IMPRESS - MOVE IN READY

Located in popular part of Romaine, this immaculately presented home is ready for you to move in and enjoy. Step inside to discover a thoughtfully designed interior that radiates warmth and comfort, creating an inviting atmosphere from the moment you arrive.

With an updated kitchen and a stylish modern bathroom, this home is move-in ready. Downstairs features a well-appointed workshop area, perfectly designed for both relaxation and entertaining.

- Sunny open-plan living area with stunning valley views
- Main bedroom featuring built-in wardrobes
- Well-appointed kitchen with ample storage and a versatile island bench
- Modern, sun-filled bathroom with a sleek walk-in shower
- Internal access to a fully equipped man cave area
- Single remote garage with the bonus of a second toilet



For Sale
\$585,000

View
By Appointment

Contact
Theresa Button
0419 395 274
tbutton.wynyard@ljhooker.com.au
Keryn Newman
0427 539 989
knewman.wynyard@ljhooker.com.au



LJ Hooker Wynyard
(03) 6442 3477

Disclaimer: All information contained therein is gathered from relevant third parties sources. We cannot guarantee or give any warranty about the information provided. Interested parties must rely solely on their own enquiries.

- Additional workshop space or second garage
- Man cave includes impressive storage solutions and a dedicated bar area
- Outdoor undercover area, ideal for year-round entertaining
- Dual driveway access, providing extra parking space and added convenience

This property is set to impress, for more information or to organise your private viewing contact us today!

Further information:

Land Size: 1540 sqm (approx.)

Toilets: 2

Built: 1992 (approx)

Council Rates: \$2,200 P/A (approx.)

**** The information on this website has been provided to LJ Hooker Wynyard by third parties. While LJ Hooker Wynyard have taken every care to verify the accuracy of the property details this information should not be relied upon and you should make your own enquiries and seek legal advice in respect of any property on the Website. All measurements are approximates ****

More About this Property

Property ID	JZJFD3
Property Type	House
Land Area	1540 m2
Including	Air Conditioning Toilets (2) Balcony Dishwasher Outdoor Entertaining Built-in-Robes Secure Parking Remote Garage

Theresa Button 0419 395 274

Sales Consultant | tbutton.wynyard@ljhooker.com.au

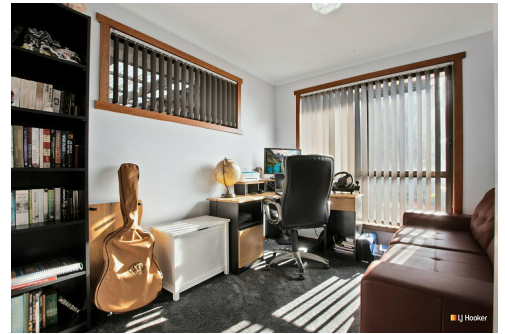
Keryn Newman 0427 539 989

Real Estate Agent | knewman.wynyard@ljhooker.com.au

LJ Hooker Wynyard (03) 6442 3477

98 Goldie Street, WYNYARD TAS 7325

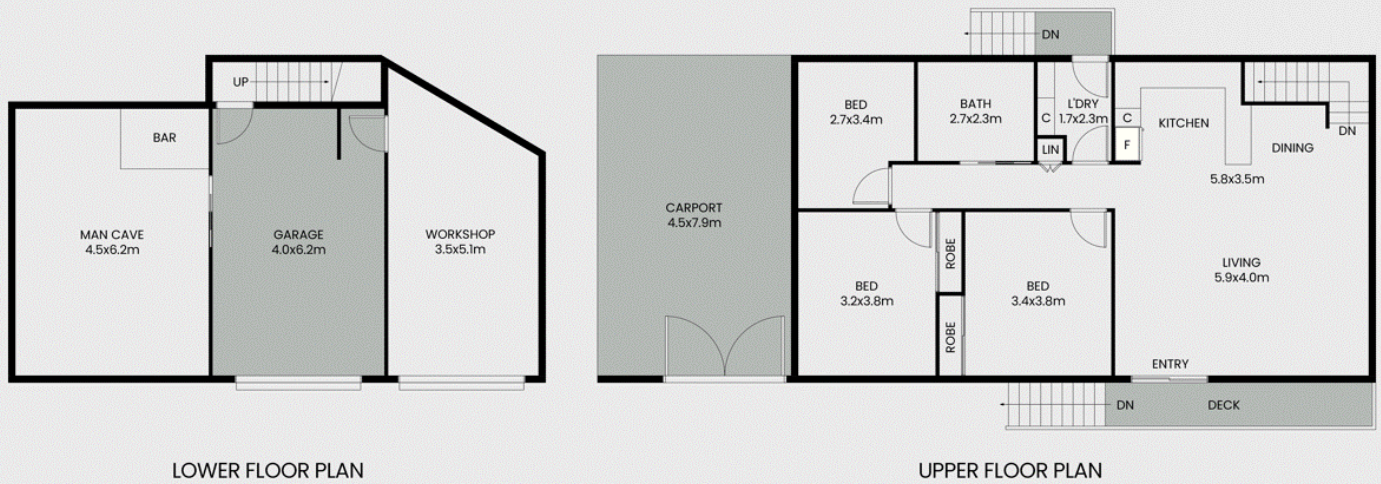
wynyard.ljhooker.com.au | wynyard@ljhooker.com.au



Disclaimer: All information contained therein is gathered from relevant third parties sources. We cannot guarantee or give any warranty about the information provided. Interested parties must rely solely on their own enquiries.

**LJ Hooker Wynyard
(03) 6442 3477**

36 Manuka Drive, Romaine



This floor plan including furniture, fixture measurements and dimensions are approximate and for illustrative purposes only. BoxBrownie.com gives no guarantee, warranty or representation as to the accuracy and layout. All enquiries must be directed to the agent, vendor or party representing this floor plan.



LJ Hooker Wynyard
(03) 6442 3477

Disclaimer: All information contained therein is gathered from relevant third parties sources. We cannot guarantee or give any warranty about the information provided. Interested parties must rely solely on their own enquiries.