



## Roma, 24 Phillip Street

### Dual Living Queenslander on Huge Block

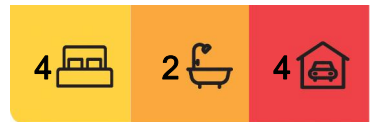
Discover the timeless elegance of this expansive Queenslander, artfully combining classic charm with modern comforts for a truly unique living experience. This property features a striking dual living setup, perfectly suited for families or savvy investors seeking a versatile residence.

On the ground floor, unwind in the large rumpus area complete with a cozy bar, or retreat to the spacious bedroom featuring ample wardrobe space. This level also includes a well-appointed bathroom, laundry facilities and separate access, ensuring privacy and convenience.

Ascend the grand wooden staircase to the upper level where high ceilings and stained pink glass windows create a light-filled and inviting ambiance. This floor houses three bedrooms and a sleepout, perfect for relaxation or an office. The living, dining and kitchen area is designed for both comfort and functionality, highlighted by an island bench, ample storage



**Disclaimer:** All information contained therein is gathered from relevant third parties sources. We cannot guarantee or give any warranty about the information provided. Interested parties must rely solely on their own enquiries.



**For Sale**  
Please Call

**View**  
[ljhooker.com.au/BU4HG2](http://ljhooker.com.au/BU4HG2)

**Contact**  
**Melanie O'Brien**  
0458 221 222  
[realestate.roma@ljhooker.com.au](mailto:realestate.roma@ljhooker.com.au)

**LJ Hooker Roma**  
**(07) 4622 1222**

and an original Crown Stove. The bathroom is a nod to nostalgia with a distinctive claw-foot bath and separate shower, complemented by a toilet featuring a double vanity. Evaporative cooling keeps you comfortable all year round.

The extraordinary double block that extends through from Phillip Street to Hasted Street presents limitless potential for your creative vision. Whether you dream of establishing a thriving vegetable garden, creating a children's play paradise, or expanding your living space, this generous land holding accommodates it all. The property's crown jewels are its two versatile sheds. The primary shed is a craftsman's sanctuary, featuring power, TV aerial and masterfully constructed timber benches and shelving that would make any DIY enthusiast proud. Perfect for woodworking projects or setting up your dream workshop. The second shed, boasting a practical dirt floor, offers the ideal space for vehicle maintenance, large-scale projects or even conversion into a dedicated hobby space. These sheds can be accessed via both front and rear of the property via double gates offering dual convenience.

Situated in a quiet, friendly street this home offers unmatched potential in a character-filled package. Whether you're a large family looking for your own piece of the country lifestyle or an investor adding another notch to your portfolio this home adapts to your lifestyle, promising a blend of sophistication and practicality.

## More About this Property

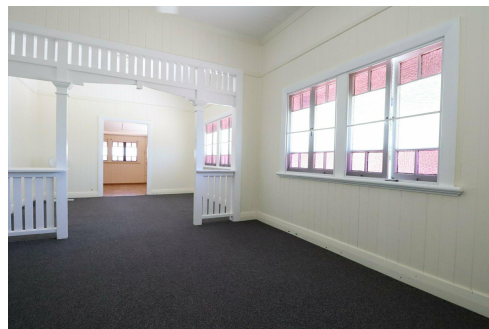
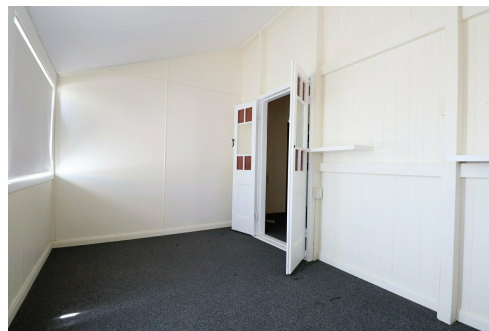
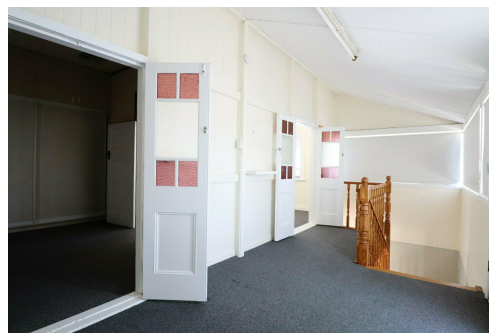
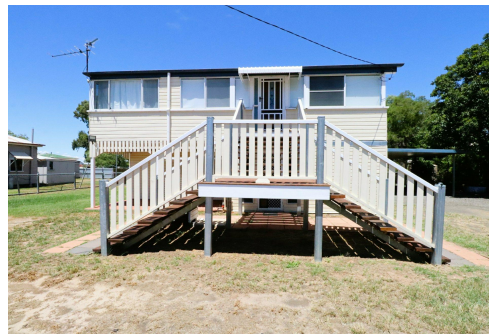
<b>Property ID</b>	BU4HG2
<b>Property Type</b>	House
<b>Land Area</b>	2036 m2
<b>Including</b>	Toilets (2)

### Melanie O'Brien 0458 221 222

Real Estate Salesperson | realestate.roma@ljhooker.com.au

### LJ Hooker Roma (07) 4622 1222

74 McDowall Street, ROMA QLD 4455  
roma.ljhooker.com.au | roma@ljhooker.com.au



**Disclaimer:** All information contained therein is gathered from relevant third parties sources. We cannot guarantee or give any warranty about the information provided. Interested parties must rely solely on their own enquiries.

**LJ Hooker Roma**  
**(07) 4622 1222**