



**Sold**



24 Hookey Court, Rokeby

## Rokeby - Invest now, thank yourself later!


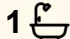

Ant's "Fluff-Free" Description&hellip;:

If you're chasing an easy-care investment with a tenant already locked in, or a smart entry point into the market, this one's for you.

Set on a well-sized 660sqm block, with multiple sheds, a big sunny deck, and plenty of future potential, this tidy brick home is ready to roll.

Features That Stack Up:

- Solid three-bedroom brick veneer build in a quiet, well-established cul-de-sac - no through traffic, no dramas.
- Oversized living/dining space (4.29m x 4.25m) with natural flow to kitchen and deck - roomy enough for the big couch and the footy crew.
- Generous kitchen (5.16m x 3.65m) with walk-in pantry, heaps of storage, modern appliances, and breakfast zone.

3  1  4 

**FOR SALE**

Offers over \$495,000

**AGENTS**

Ant Manton  
0408 621 856  
antmanton@ljhookerpinnacle.com

Anna Holmes  
(03) 6272 8177  
aholmes@ljhpinnacle.com.au

**AGENCY**

LJ Hooker Pinnacle Property  
(03) 6272 8177

All information contained therein is gathered from relevant third parties sources.  
We cannot guarantee or give any warranty about the information provided.  
Interested parties must rely solely on their own enquiries.

 **LJ Hooker**

- Three bright bedrooms, all with built-in robes - including a king-capable primary (3.08m x 3.67m) and a huge third bedroom that could moonlight as a second living space or home office.
- Updated central bathroom with shower over tub, and separate toilet - simple, clean, functional.
- Dedicated laundry and dual sheds out the back for tools, toys or tinkering.
- Massive 5m x 5m deck - ideal for tenant BBQs, entertaining mates, or just soaking up the afternoon sun.
- Fully fenced rear yard with good lawn space, two garden sheds and loads of privacy.
- Zoned General Residential - keep it simple or explore future potential (STCA).

#### Location Perks:

- Close to Rokeby Primary, local shops, parks, public transport & services.
- Just 15 mins to the CBD and even closer to Shoreline Plaza, Howrah Beach, and the local Bunnings (you know it's important).

This is the kind of home that makes your accountant smile - instant income, low-maintenance bones, and strong capital growth in one of Hobart's fastest-developing suburbs.

Ready to add to your portfolio or start your journey? Call now and snap it up before someone else does.

Onwards and upwards to your Rokeby Investment or 1st Home cracker!

"I Work Harder - It's THAT Simple!"

## MORE DETAILS

Property ID 8ZJ1F  
Property Type House  
House Size 100 m2  
Land Area 660 m2  
Including Air Conditioning  
Toilets (1)  
Balcony  
Deck  
Outdoor Entertaining  
Workshop  
Built-in-Robes  
Fully Fenced

**Ant Manton 0408 621 856**

Real Estate Agent | [antmanton@ljhookerpinnacle.com](mailto:antmanton@ljhookerpinnacle.com)

**Anna Holmes (03) 6272 8177**

Executive Assistant to Ant Manton | [aholmes@ljhpinnacle.com.au](mailto:aholmes@ljhpinnacle.com.au)

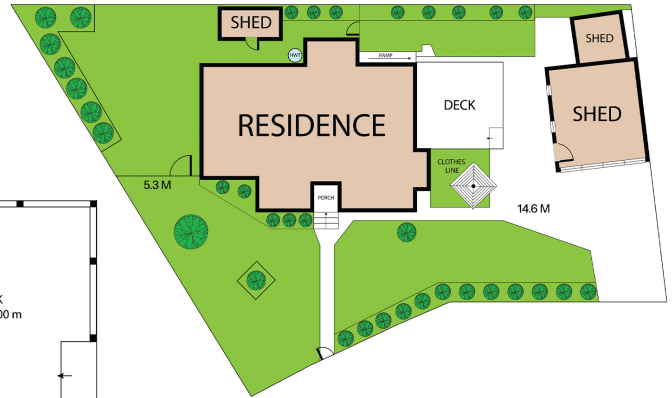
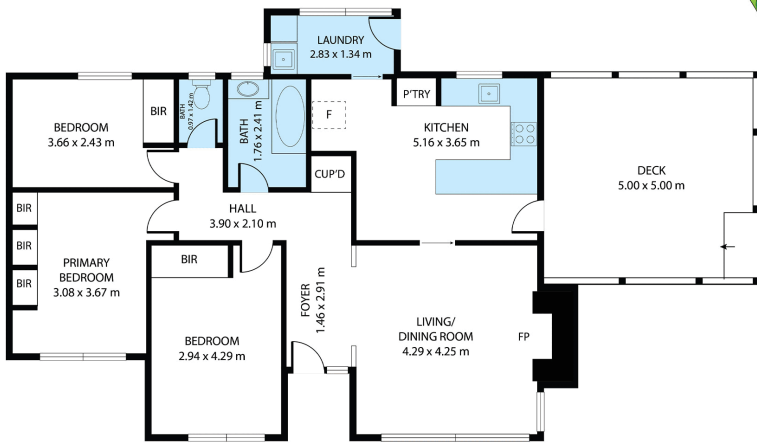
**LJ Hooker Pinnacle Property (03) 6272 8177**

402 Main Road, GLENORCHY TAS 7010

[pinnacleproperty.ljhooker.com.au](http://pinnacleproperty.ljhooker.com.au) | [hello@ljhpinnacle.com.au](mailto:hello@ljhpinnacle.com.au)



All information contained therein is gathered from relevant third parties sources.  
We cannot guarantee or give any warranty about the information provided.  
Interested parties must rely solely on their own enquiries.



**24 Hookey Court, Rokeby**  
House area: 94 sqm

Areas and dimensions are approximate and therefore this floor plan should only be used for illustrative purposes.  
Real Estate Marketing by [nextcreative.com.au](http://nextcreative.com.au)

