






11 Fontain Circle, Rokeby

3  1  3 

## Stylishly renovated, perfectly positioned

Tucked away in a quiet and convenient location, this beautifully presented home is ready for its next chapter. With standout renovations and thoughtful finishes throughout, it offers the kind of comfort, space, and lifestyle flexibility that's hard to find at this level.

The heart of the home is the stunning, fully renovated kitchen, complete with modern cabinetry, quality appliances, and a clean, functional layout that will make everyday living and entertaining a breeze. The bathroom has also been renovated with a contemporary palette and features a freestanding bath for that added touch of luxury.

Freshly painted and tastefully styled throughout, the home offers three comfortable bedrooms, light-filled living spaces, and nothing to do but move in and enjoy. Outside, there is plenty of space for vegetable gardens, play equipment and there is even a chicken coop. The garden creates a sense of privacy and peace, while the large entertaining deck at the rear is ideal for hosting family and friends all year round.

Underneath the home, there's a generous space just waiting to be

**FOR SALE**  
Please Call

### AGENTS

Cara Montgomery  
0410 787 846  
cmontgomery@ljhpinnacle.com.au

### AGENCY

LJ Hooker Pinnacle Property  
(03) 6272 8177

All information contained therein is gathered from relevant third parties sources.  
We cannot guarantee or give any warranty about the information provided.  
Interested parties must rely solely on their own enquiries.

 **LJ Hooker**

turned into a workshop, home gym, or the ultimate man cave, all it needs is your vision to bring it to life.

Whether you're a first home buyer starting your journey, an investor seeking a move-in-ready opportunity, or a growing family looking for a home with room to move and grow, this one ticks all the boxes.

Rates - \$1,600 approx

Rental Estimate - \$500 - \$540 p/w

The information contained herein has been supplied to us and we have no reason to doubt its accuracy, however, cannot guarantee it. Accordingly, all interested parties should make their own enquiries to verify this information.

## MORE DETAILS

Property ID	48J1F
Property Type	House
House Size	111 m2
Land Area	644 m2
Including	Air Conditioning Toilets (1) Balcony Deck Outdoor Entertaining Workshop Fully Fenced

**Cara Montgomery 0410 787 846**

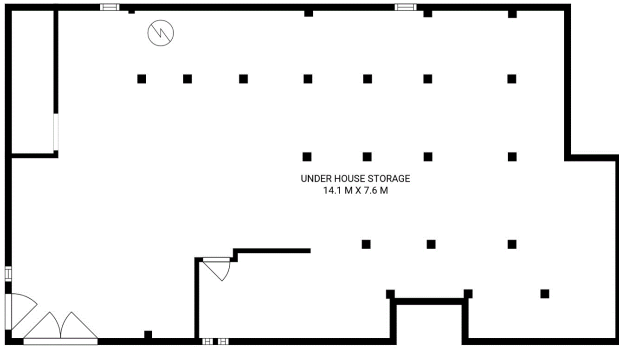
Property Representative | [cmontgomery@ljhpinnacle.com.au](mailto:cmontgomery@ljhpinnacle.com.au)

**LJ Hooker Pinnacle Property (03) 6272 8177**

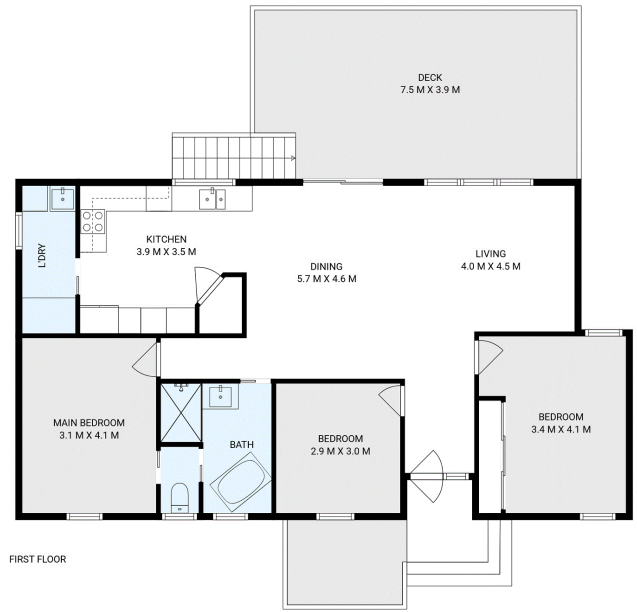
402 Main Road, GLENORCHY TAS 7010

[pinnacleproperty.ljhooker.com.au](http://pinnacleproperty.ljhooker.com.au) | [hello@ljhpinnacle.com.au](mailto:hello@ljhpinnacle.com.au)





GROUND FLOOR



FIRST FLOOR



**11 Fountain Circle, Rokeby**

House area: 118 sqm

Areas and dimensions are approximate and therefore this floor plan should only be used for illustrative purposes.

Real Estate Marketing by [nextcreative.com.au](http://nextcreative.com.au)

