

## Rochedale South, 3 Knox Court

### Architectural Brilliance in a Tranquil Tropical Oasis

Showcasing jaw-dropping panoramic views and unsurpassed architectural grandeur, this sprawling upmarket residence is one of Rochedale South's most extraordinary offerings. Crowned "House of the Year" after its original build, this masterfully designed multi-level retreat delivers resort-style living amid a serene rainforest setting. Just steps from schools, childcare, parks, shops and buses, it offers both convenience and grandeur in perfect harmony.

#### Prestige Highlights:

- Iconic architect-designed home crowned "House of the Year," delivering vast multi-tiered living and lush rainforest surrounds with sweeping scenic outlooks
- High-set in a peaceful cul-de-sac offering striking 180-degree views and an indulgent pool sanctuary surrounded by towering palms and total privacy
- Three beautiful bedrooms with scenic outlooks and balcony access, plus a versatile loft



**Disclaimer:** All information contained therein is gathered from relevant third parties sources. We cannot guarantee or give any warranty about the information provided. Interested parties must rely solely on their own enquiries.

3	2	4	1
---	---	---	---

**For Sale**  
Auction

**View**  
By Appointment

**Contact**  
**Emily Xiong**  
0401 056 588  
emilyxiong@ljhpp.com.au

**LJ Hooker Property Partners**  
07 3344 0288

ideal as study or additional bedroom

- Elegant interiors featuring stunning vaulted ceilings, a wood-burning fireplace, modern kitchen and striking architectural details throughout
- Ultra-convenient location within walking distance to schools, shops, parks, and public transport

Tucked at the end of a whisper-quiet suburban cul-de-sac, this architecturally extraordinary home sits high above the canopy with a stunning brick and timber facade that pays homage to its retro roots while flaunting a modernised, stylish interior. The unique multi-level design makes an immediate impact, set against a backdrop of rainforest tranquillity and vast skies.

Voted "House of the Year" after its construction, this bold statement home presents a rare opportunity for families seeking something truly spectacular. A long private driveway leads to a spacious double garage and carport, offering abundant parking, while a charming timber pedestrian pathway winds past lush palms, inviting you into your exclusive treetop retreat.

As you ascend the timber pathway, the grandeur builds until you reach the elevated inground pool - a gleaming centrepiece bordered by sleek glass balustrades and a sun-drenched terrace. Whether you're unwinding with a drink poolside or entertaining on the oversized raised patio above, this alfresco zone delivers the ambience of a luxury resort. An external staircase leads to a secondary deck, offering entry into the main residence - where architectural brilliance and scenic beauty unite.

A tiled foyer welcomes you inside with a striking spiral staircase creating a dramatic first impression. To one side, the expansive living room beckons, adorned with a chic brick feature wall, crackling wood burner fireplace, trendy pendant lighting, and lofty vaulted ceilings that elevate the entire space. Timber-look floors and swathes of windows invite light and panoramic views inside, creating a setting as perfect for intimate evenings as it is for stylish entertaining.

Wide sliding doors open out to a massive deck where you can bask in breathtaking vistas, before stepping up to the adjacent dining area, artfully framed by a trendy diagonal VJ panel feature wall.

Opposite the dining area, the designer kitchen shines with sophistication. An endless stretch of white cabinetry and gleaming waterfall stone countertops provide utility with contemporary flair, while the bay window with matte-black tapware offers a leafy outlook over the rear deck. Air conditioning ensures comfort while you prepare meals using the quality electric appliances and dishwasher - making it a refined culinary space worthy of its luxurious setting.

Step out to the rear deck and be transported to your own private tropical escape. Beneath a thatched Bali-style roof, the covered area exudes luxury, ideal for alfresco dining or grand entertaining. This elevated outdoor space flows seamlessly onto an open-air deck, all nestled among dense palms and retained gardens that keep this sanctuary cool and inviting year-round.

The accommodation is just as indulgent, offering:



**LJ Hooker Property Partners**  
**07 3344 0288**

**Disclaimer:** All information contained therein is gathered from relevant third parties sources. We cannot guarantee or give any warranty about the information provided. Interested parties must rely solely on their own enquiries.

- A tiled, air-conditioned bedroom with direct access to the open-air deck and a built-in robe
- A sunken carpeted bedroom with air conditioning, built-in robe, and sweeping views
- A sumptuous sunken master suite with feature ceiling fan, air conditioning, large built-in robe, private balcony, and elegant ensuite featuring matte-black tapware and a frameless shower

The main bathroom echoes this luxe aesthetic with a frameless shower and stone-topped vanity. Upstairs, the spiral staircase leads to a generous loft with its own private balcony and mezzanine overlooking the lounge - perfect as a serene study or potential fourth bedroom.

Additional Luxury Features:

- Photovoltaic solar panel system
- Internal laundry
- Extensive under-house storage

This is not just a stunning residence - it's also supremely convenient. With shops, schools, parks and transport within walking distance, it's a location made for growing families and professionals who want it all: space, beauty, privacy and accessibility.

- 66 m to bus stop
- 290 m to Springwood Road State School
- 600 m to Kids Early Learning Centres Springwood
- 750 m to Springwood State High School
- 800 m to Barooka Park Off-leash Dog Area
- 1.2 km to Springwood Mall
- 1.2 km to Arndale Shopping Centre

This is a home like no other - bold, luxurious, and breathtakingly beautiful. To experience its full brilliance for yourself, contact Emily Xiong today. Opportunities like this are incredibly rare - don't let this one pass you by.

All information contained herein is gathered from sources we consider to be reliable. However, we cannot guarantee or give any warranty about the information provided and interested parties must solely rely on their own enquiries.

Asia-Pacific Group (Australia) Pty Ltd with Sunnybank Districts P/L T/A LJ Hooker Property Partners  
ABN 39 831 978 227 / 21 107 068 020



**LJ Hooker Property Partners**  
**07 3344 0288**

**Disclaimer:** All information contained therein is gathered from relevant third parties sources. We cannot guarantee or give any warranty about the information provided. Interested parties must rely solely on their own enquiries.

## More About this Property

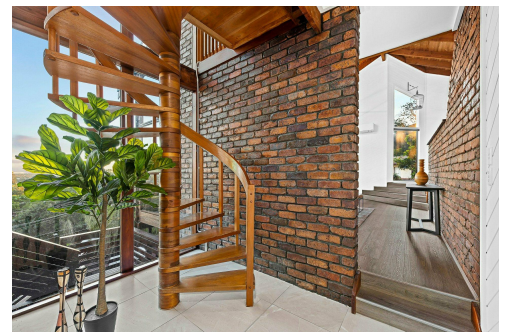
<b>Property ID</b>	B380F4R
<b>Property Type</b>	House
<b>Land Area</b>	818 m2
<b>Including</b>	Study Air Conditioning Pool Balcony Deck Dishwasher Outdoor Entertaining Built-in-Robes Secure Parking Fully Fenced Remote Garage Solar Panels fire pit

**Emily Xiong 0401 056 588**

Agent/Independent Contractor | [emilyxiong@ljhpp.com.au](mailto:emilyxiong@ljhpp.com.au)

**LJ Hooker Property Partners 07 3344 0288**

25 Pinelands Road, SUNNYBANK HILLS QLD 4109  
[propertypartners.ljhooker.com.au](http://propertypartners.ljhooker.com.au) | [sunnybankhills@ljhpp.com.au](mailto:sunnybankhills@ljhpp.com.au)



**LJ Hooker Property Partners**  
**07 3344 0288**

**Disclaimer:** All information contained therein is gathered from relevant third parties sources.  
We cannot guarantee or give any warranty about the information provided. Interested parties must rely solely on their own enquiries.

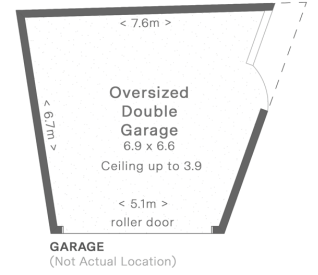
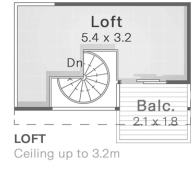
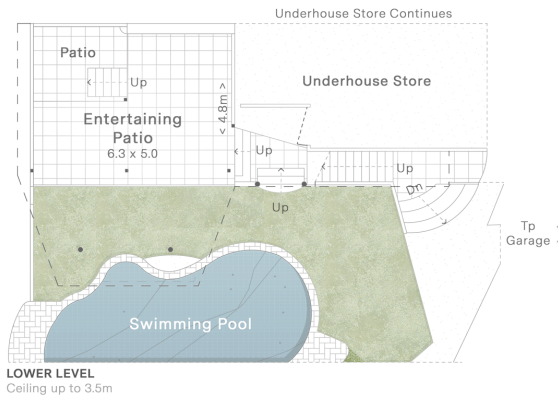
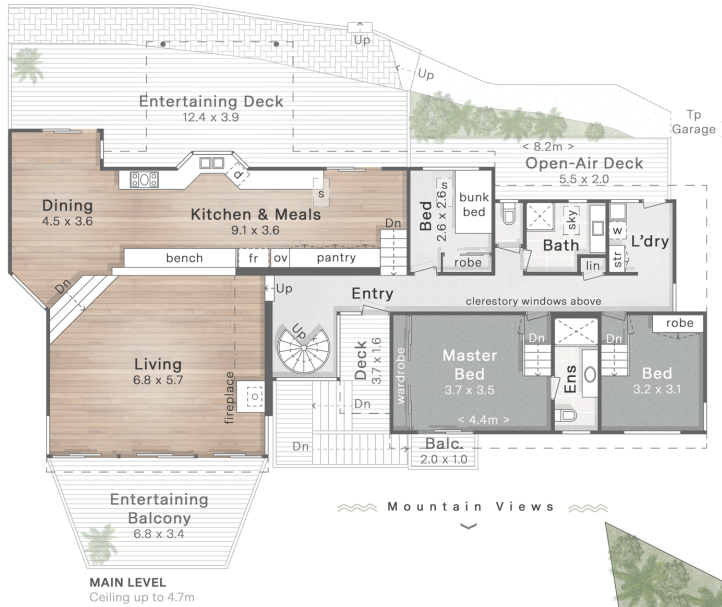
3 Knox Court  
Rosedale South

- 818m<sup>2</sup> Land Size
- 3 Bed + Loft
- 2 Bath
- 3 Car + Off-Street

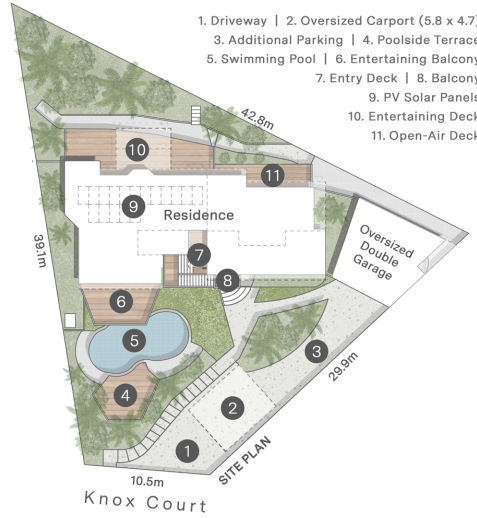
Internal 172m<sup>2</sup>  
Loft 14m<sup>2</sup>  
Balconies, Decks & Patio 124m<sup>2</sup>  
Garage & Carport 77m<sup>2</sup>  
Total 392m<sup>2</sup>  
Remaining Covered Areas 17m<sup>2</sup>



**DISCLAIMER:** This is not a legal document therefore all measurements and information provided is subject to survey. No permission is given to use or alter this Floor Plan without the consent of FloorScape. The overall presentation style, layout, imagery, fonts, background, colours and terminology has been originally created by FloorScape and is subject to strict copyright. No ownership is taken of building design. Find out more at floorscape.au



1. Driveway | 2. Oversized Carport (5.8 x 4.7)
3. Additional Parking | 4. Poolside Terrace
5. Swimming Pool | 6. Entertaining Balcony
7. Entry Deck | 8. Balcony
9. PV Solar Panels
10. Entertaining Deck
11. Open-Air Deck



NORTH ↖