



21 Lillium Street, Rochedale

SOLD BY EMILY XIONG

Sophisticated design meets everyday comfort in this near-new, three-year-old Metricon masterpiece, nestled within the prestige surrounds of Rochedale. A striking blend of quality craftsmanship and modern lifestyle flexibility, this double-storey home offers space, style, and security in one of Brisbane's most desirable family neighbourhoods.

Features at a Glance:

1. Contemporary 3-year-old Metricon double-storey home in prime Rochedale.
2. Four bedrooms with built-ins; master with ensuite and oversized shower.
3. Sleek gas kitchen with breakfast bar, WI pantry and quality appliances.
4. Open-plan living & dining plus separate family/media retreat.
5. Covered alfresco entertaining on a low-maintenance 342m²/u178? block.

From its contemporary street appeal to its sprawling interior, this home is a showcase of refined living and family-friendly functionality. Designed and built by Metricon, it reflects the calibre and care synonymous with one of Australia's most respected builders - offering a rare chance to secure a home of true substance in a tightly held address.

All information contained therein is gathered from relevant third parties sources. We cannot guarantee or give any warranty about the information provided. Interested parties must rely solely on their own enquiries.

4  2  2 

FOR SALE
Under Contract

AGENTS

Emily Xiong
0401 056 588
emilyxiong@ljhpp.com.au

AGENCY

LJ Hooker Property Partners
07 3344 0288

 **LJ Hooker**

At the heart of the home, the open-plan living and dining zone unfolds beautifully, setting the scene for relaxed family life and effortless entertaining. A separate carpeted media room offers added flexibility - ideal as a retreat, home theatre or space for the kids to unwind.

The gourmet kitchen connects perfectly with both indoor and outdoor living, ensuring the family chef remains part of the action. Appointed with stainless steel appliances, a gas cooktop, generous breakfast bar, and hidden pantry nook for fridge and storage, this culinary hub makes cooking and hosting a breeze.

Sliding glass doors open to a covered patio that wraps around the side of the house to an alfresco dining space - perfect for weekend BBQs, morning coffee or evening drinks. Overlooking the neat, low-maintenance backyard, this inviting outdoor setting offers just the right balance of space and simplicity.

Upstairs, the thoughtful layout continues with four generous bedrooms - each appointed with built-in robes, neutral finishes and abundant natural light. The master suite is a standout, offering a serene retreat complete with a sleek ensuite, double vanity and generous shower. The main bathroom, finished in modern tones, features a separate shower and bathtub - ideal for growing families.

Additional features include ducted air conditioning for year-round comfort, quality window furnishings, excellent storage solutions, and a secure double garage.

Set within a master-planned estate known for its peaceful ambience and strong sense of community, this address delivers convenience on every level. Just minutes to Rochedale Village, Coles, local cafes and essential services, with Redeemer Lutheran College and Rochedale State School close by. Access to the Gateway and Pacific Motorways is also quick and easy, putting the CBD and coast within easy reach.

For buyers seeking premium design, low-maintenance living and family-friendly credentials in a blue-chip suburb - 21 Lillium Street is the one you've been waiting for. Immaculate, inviting and move-in ready, this Metricon-built home won't stay on the market long.

Contact Emily Xiong today to arrange your private inspection.

All information contained herein is gathered from sources we consider to be reliable. However, we cannot guarantee or give any warranty about the information provided and interested parties must solely rely on their own enquiries.

Asia-Pacific Group (Australia) Pty Ltd with Sunnybank Districts P/L
T/A LJ Hooker Property Partners
ABN 39 831 978 227 / 21 107 068 020

MORE DETAILS

Property ID	B3G4F4R
Property Type	House
Land Area	342 m2
Including	Air Conditioning
	Toilets (1)
	Dishwasher
	Built-in-Robes
	Secure Parking
	Remote Garage

Emily Xiong 0401 056 588

Agent/Independent Contractor | emilyxiong@ljhpp.com.au

LJ Hooker Property Partners 07 3344 0288

25 Pinelands Road, SUNNYBANK HILLS QLD 4109
propertypartners.ljhooker.com.au | sunnybankhills@ljhpp.com.au



All information contained therein is gathered from relevant third parties sources.
We cannot guarantee or give any warranty about the information provided.
Interested parties must rely solely on their own enquiries.

Emily Xiong
0401 056 588

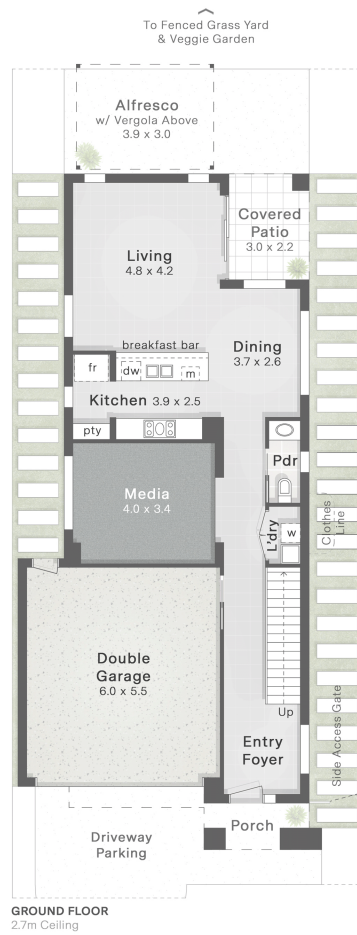
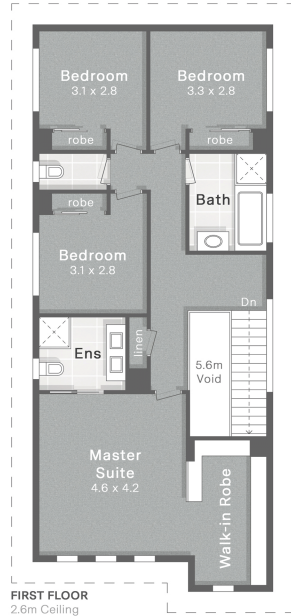
21 Lillium Street
Rosedale

- 342m² Land Size
- 4 Bed + Media
- 2 Bath + Powder
- 2 Car + Off-Street

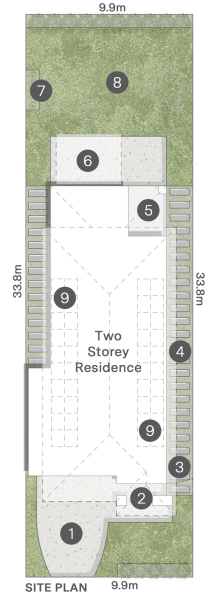
Internal 223m²
Alfresco, Patio & Porch 25m²
Total 248m²



DISCLAIMER: This is not a legal document therefore all measurements and information provided is subject to survey. No permission is given to use or alter this Floor Plan without the consent of FloorScape. The overall presentation style, layout, imagery, fonts, background, colours and terminology has been originally created by FloorScape and is subject to strict copyright. No ownership is taken of building design. Find out more at floorscape.au



1. Driveway Parking
2. Entry Porch
3. Side Access Gate
4. Clothes Line
5. Covered Patio
6. Alfresco
7. Veggie Garden
8. Fenced Grass Yard
9. PV Solar Panels



NORTH ↑