

19 Abloom Street, Rochedale

Artisan Elegance: Brand-New Luxury Defined by the Details


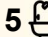
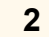
Bespoke. Brand-New. Breathtaking.

Experience the pinnacle of sophisticated family living in this brand-new, artisan-crafted residence, perfectly positioned within a highly sought-after Rochedale enclave. Merging architectural bravery with timeless luxury, this bespoke home offers a rare level of detail and privacy for the discerning modern family.

Highlights:

- Brand-new luxury home in a sought-after Rochedale enclave, with bespoke artisan details including stone feature walls and hand-crafted plaster across two grand storeys
- Soaring architectural voids at the entry and dining areas, flooding the home with natural light
- Elite entertaining with a gourmet kitchen, glass wine storage, and a poolside alfresco zone with a wet bar
- Five ensuited bedrooms including a master wing with peaceful views and a guest suite downstairs
- Prestigious Rochedale address - close to Rochedale Village, schools, shops, parks and major transport routes

From the first impression, this residence makes a bold architectural

5  5  2 

FOR SALE

For Sale

VIEW

Thu 14th May @ 6:00PM - 6:30PM

AGENTS

Emily Xiong
0401 056 588
emilyxiong@ljhpp.com.au

AGENCY

LJ Hooker Property Partners
07 3344 0288

All information contained therein is gathered from relevant third parties sources.
We cannot guarantee or give any warranty about the information provided.
Interested parties must rely solely on their own enquiries.

 **LJ Hooker**

statement. The exterior features a sophisticated render finish, while the entry sequence introduces a grand stone feature wall. Inside, the craftsmanship is immediately evident, with artisan-crafted plaster feature walls and a warm timber-clad ceiling that anchors the soaring entry void.

The entry foyer rises beneath a high void, creating an immediate sense of scale and connection. This architectural drama extends to the central dining area, where a secondary void ensures the heart of the home is bathed in sunlight. The layout flows naturally toward the gourmet kitchen - a culinary showpiece featuring a premium appliance tower, a large walk-in pantry, and elegant glass wine storage.

Entertaining transitions effortlessly to the outdoors, where a large dining space and poolside lounge await. Complete with its own wet bar, this alfresco zone overlooks the sparkling in-ground pool, offering a private sanctuary for gatherings and the promise of sweet summer memories.

The ground floor is further enhanced by a fully equipped guest suite with a private ensuite, providing ideal accommodation for extended family. A separate lounge room and a stylish powder room ensure the main living zones remain focused on relaxation and hospitality.

Upstairs, the home continues to impress with a floor plan designed for ultimate privacy. Every one of the four bedrooms on this level features its own private ensuite and built-in robes. The master suite commands its own private wing, offering a peaceful retreat with views overlooking Priestdale Road.

At the centre of the upper level, a spacious family retreat serves as a second lounge, complete with a wet bar and access to a street-view balcony, the perfect spot to unwind while enjoying the afternoon breeze.

Throughout, the finishes speak of quality, while being positioned in one of Rochedale's most coveted pockets puts you moments from the shopping and dining of Rochedale Village, elite schools, and lush green spaces. With convenient links to major arterials for efficient travel to Brisbane CBD and beyond, this is a residence that simply embodies modern executive living.

Welcome to a home that is bespoke, bold, and perfectly positioned. Contact Emily Xiong today to make it yours.

All information contained herein is gathered from sources we consider to be reliable. However, we cannot guarantee or give any warranty about the information provided and interested parties must solely rely on their own enquiries.

Asia-Pacific Group (Australia) Pty Ltd with Sunnybank Districts P/L
T/A LJ Hooker Property Partners ABN 39 831 978 227 / 21 107 068
020

MORE DETAILS

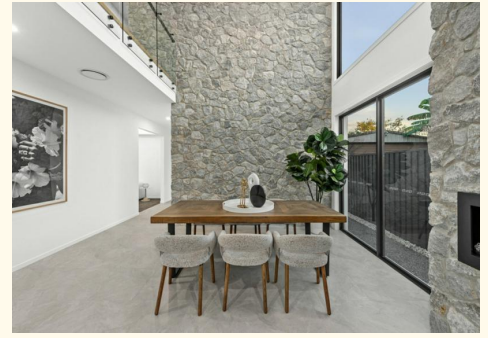
Property ID	B4MDF4R
Property Type	House
Land Area	404 m2
Including	Air Conditioning
	Toilets (1)
	Pool
	Balcony
	Dishwasher
	Outdoor Entertaining
	Built-in-Robes
	Secure Parking
	Fully Fenced
	Remote Garage

Emily Xiong 0401 056 588

Agent/Independent Contractor | emilyxiong@ljhpp.com.au

LJ Hooker Property Partners 07 3344 0288

25 Pinelands Road, SUNNYBANK HILLS QLD 4109
propertypartners.ljhooker.com.au | sunnybankhills@ljhpp.com.au



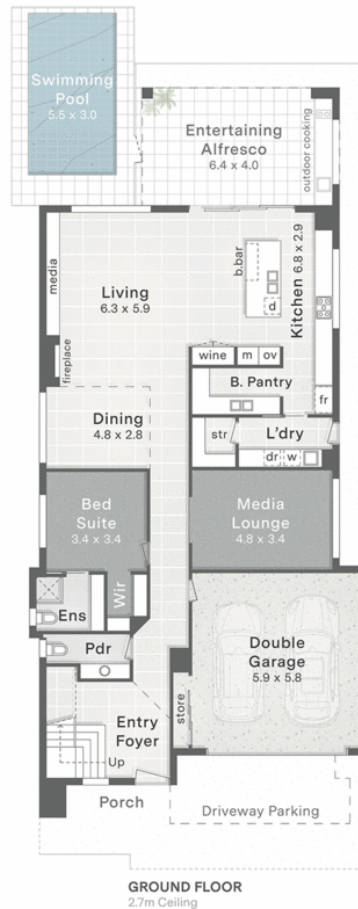
19 Abloom Street
 Rosedale

- 404m² Land Size
- 5 Bed + Media
- 5 Bath + Powder
- 2 Car + Off Street

Internal 373m²
 Alfresco, Balcony & Porch 40m²
 Total 413m²
 Pool Area 28m²



DISCLAIMER: This is not a legal document therefore all measurements and information provided is subject to survey. No permission is given to use or alter this Floor Plan without the consent of FloorScape. The overall presentation style, layout, imagery, fonts, background, colours and terminology has been originally created by FloorScape and is subject to strict copyright. No ownership is taken of building design. Find out more at floorscape.au



1. Driveway Parking
2. Entry Gate
3. Entry Porch
4. Entertaining Alfresco
5. Swimming Pool

