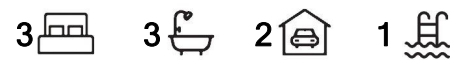




## Robina, 190/2 Bella Avenue

SOLD BY LEE-ANNE KLAUS



### For Sale

Offers over \$950,000

### View

[ljhooker.com.au/1TYVF47](http://ljhooker.com.au/1TYVF47)

### Contact

**Lee-Anne Klaus**

0413 435 577

[lee-anne@ljhookersgc.com.au](mailto:lee-anne@ljhookersgc.com.au)

Nestled in a sought-after, secure community in the heart of Robina, this stunning townhouse offers contemporary living with premium features. Perfect for families, professionals, or investors, this property is designed for comfort and convenience. Relax by the stunning pool and make use of other community facilities that enhance your everyday living experience.

### Property Features:

- Spacious open-plan living area with seamless indoor-outdoor flow
- Quiet green space outlook - enjoy the breezes
- Stylish galley-style kitchen featuring high-quality appliances and ample storage
- Massive outdoor entertaining area with extra green space - ideal for kids or pets
- Functional internal laundry and convenient third guest powder room
- Direct internal access from the double lock-up garage
- Raised garden beds - perfect for the veggie patch

# LJ Hooker

**Disclaimer:** All information contained therein is gathered from relevant third parties sources.

We cannot guarantee or give any warranty about the information provided. Interested parties must rely solely on their own enquiries.

**LJ Hooker Southern Gold Coast**  
(07) 5534 4033

Upstairs level:

- Oversized master bedroom with spacious ensuite, walk-in wardrobe, air conditioning and private balcony
- Two additional bedrooms - complete with air conditioning, ceiling fans, and built-in wardrobes
- Versatile second living zone - perfect for kids, a study, or relaxation space
- Modern master bathroom with separate toilet for added family practicality
- Quality new carpet throughout this level
- Body corporate approx. \$146.00 per week

Location Highlights:

- 5 min walk to Robina Train and Bus stations
- 5 min drive to Robina Town Centre
- 5 min drive to Robina Hospital
- 15 min drive to Burleigh Beach
- 22 min drive to Coolangatta Airport
- Easy access to major roads and all Gold Coast beaches

Do not miss your opportunity to inspect this property - call Lee-Anne Klaus today on 0413435577

Disclaimer:

All information (including but not limited to the property area, floor size, price, address and general property description) is provided as a convenience to you, and has been provided to LJ Hooker by third parties. LJ Hooker is unable to definitively confirm whether the information listed is correct or 100% accurate. LJ Hooker does not accept any liability (direct or indirect) for any injury, loss, claim, damage or any incidental or consequential damages, including but not limited to lost profits or savings, arising out of or in any way connected with the use of any information, or any error, omission or defect in the information, contained on the Website. Information contained on the Website should not be relied upon and you should make your own enquiries and seek legal advice in respect of any property on the Website. Prices displayed on the Website are current at the time of issue, but may change.

# More About this Property

Property ID	1TYVF47
Property Type	Townhouse
Including	Ensuite Air Conditioning Toilets (3) Intercom Pool Balcony Deck Dishwasher Outdoor Entertaining Built-in-Robes Secure Parking Remote Garage Liveability

**Lee-Anne Klaus 0413 435 577**  
Sales & Marketing Specialist | [lee-anne@ljhookersgc.com.au](mailto:lee-anne@ljhookersgc.com.au)

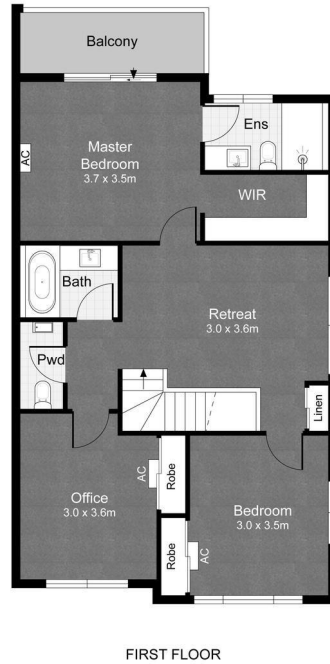
**LJ Hooker Southern Gold Coast (07) 5534 4033**  
Shop 2, 10 Fifth Avenue, PALM BEACH QLD 4221  
[southerngoldcoast.ljhooker.com.au](http://southerngoldcoast.ljhooker.com.au) | [enquiries@ljhookersgc.com.au](mailto:enquiries@ljhookersgc.com.au)



**Disclaimer:** All information contained therein is gathered from relevant third parties sources.  
We cannot guarantee or give any warranty about the information provided. Interested parties must rely solely on their own enquiries.

**LJ Hooker Southern Gold Coast**  
**(07) 5534 4033**





190/2 BELLA AVENUE, ROBINA

2 2 2

Internal: 155m<sup>2</sup> | External: 35m<sup>2</sup> | Total: 190m<sup>2</sup>

Scale in meters. Indicative only. Dimensions are approximate.  
All information contained herein is gathered from sources we believe to be reliable.  
However, we cannot guarantee its accuracy and interested persons should rely on their own enquiries.