



36 Veta Street, Robertson

SOLD BY EMILY XIONG

Set proudly on a wide 20.9m frontage in one of Robertson's most tightly held cul-de-sacs, this grand double brick home offers timeless European charm, quality craftsmanship, and a floorplan that's as functional as it is flexible. Recently refreshed with stylish upgrades throughout, the home delivers a rare opportunity for families seeking dual-living potential or an expansive layout for extended household needs.

Top 5 Features at a Glance:

1. Wide 20.9m frontage in a quiet cul-de-sac - solid brick home with European flair.
2. Two spacious MPRs downstairs plus a second bathroom - ideal for dual living or home business setup.
3. Light-filled upper level with three large bedrooms, modernised bathroom, and generous living areas.
4. Elevated entertaining with balconies front and back, plus large lawn for kids and pets.
5. Prime location near Sunnybank Plaza, Griffith Uni, Market Square, and elite schools.

With its arched brickwork, twin balconies, and beautifully manicured surrounds, this is a home that blends nostalgic warmth with contemporary liveability - ready for the next family to move straight in

3 2 2

FOR SALE

Please Call

AGENTS

Emily Xiong
0401 056 588
emilyxiong@ljhpp.com.au

AGENCY

LJ Hooker Property Partners
07 3344 0288

All information contained therein is gathered from relevant third parties sources.
We cannot guarantee or give any warranty about the information provided.
Interested parties must rely solely on their own enquiries.



and enjoy.

Brick archways frame the wide front porch and upper balcony, while the double garage and neatly landscaped lawn speak to quality and permanence. Step inside to find a flexible entry-level floorplan complete with two multipurpose rooms, a full bathroom, laundry, and kitchenette - ideal for teens, grandparents, home businesses or rental potential (STCA). There's also generous lounge space, updated flooring, and air-conditioning for year-round comfort.

Upstairs is beautifully bright and open, with elegant archways, soft neutral tones, and an inviting main living zone that flows to the front balcony. The kitchen offers ample bench space, a breakfast bar, and views over the backyard - perfect for watching the kids while you cook. Adjoining this, the tiled rear balcony and external staircase allows you to enjoy indoor-outdoor living across both levels.

Three spacious bedrooms feature quality carpet, built-in wardrobes, and large windows that let in natural light. The bathroom has been stylishly renovated with a modern vanity, new tapware, and modern tiles for a fresh finish. There's nothing left to do - just move in and enjoy.

Out the back, a covered gazebo offers shade and privacy, while the expansive, fully fenced backyard is ideal for kids, pets, or future landscaping dreams. There's even a water tank and garden shed, plus wide side access to accommodate trailers or additional vehicles.

Located in a peaceful street surrounded by quality homes, this address is so close to everything, including:

- 4 min walk to buses for Eight Mile Plains, Griffith Uni & Garden City
- 10 min walk to Sunnybank Plaza & Market Square
- 10 min walk to QEII Hospital
- 13 min walk to Robertson State School
- 15 min walk to city buses
- 18 min walk to Macgregor State, St Thomas More & Sunnybank State Schools
- 5 min drive to Griffith Uni Nathan Campus
- 7 min drive to Westfield Garden City
- Surrounded by childcare centres and top-tier private/public schools

Whether you're upsizing, investing in long-term multi-gen living, or seeking a quality home in one of the southside's most coveted suburbs, 36 Veta Street is the solid foundation your future deserves.

Don't miss this rare chance to secure a solid dual-living gem in the heart of Robertson - contact Emily Xiong today to arrange your inspection.

All information contained herein is gathered from sources we consider to be reliable. However, we cannot guarantee or give any warranty about the information provided and interested parties must solely rely on their own enquiries.

Asia-Pacific Group (Australia) Pty Ltd with Sunnybank Districts P/L
T/A LJ Hooker Property Partners
ABN 39 831 978 227 / 21 107 068 020

MORE DETAILS

Property ID B3EAF4R
Property Type House
Land Area 663 m2
Including Air Conditioning
Balcony
Dishwasher
Outdoor Entertaining
Secure Parking
Remote Garage

Emily Xiong 0401 056 588

Agent/Independent Contractor | emilyxiong@ljhpp.com.au

LJ Hooker Property Partners 07 3344 0288

25 Pinelands Road, SUNNYBANK HILLS QLD 4109
propertypartners.ljhooker.com.au | sunnybankhills@ljhpp.com.au



All information contained therein is gathered from relevant third parties sources.
We cannot guarantee or give any warranty about the information provided.
Interested parties must rely solely on their own enquiries.

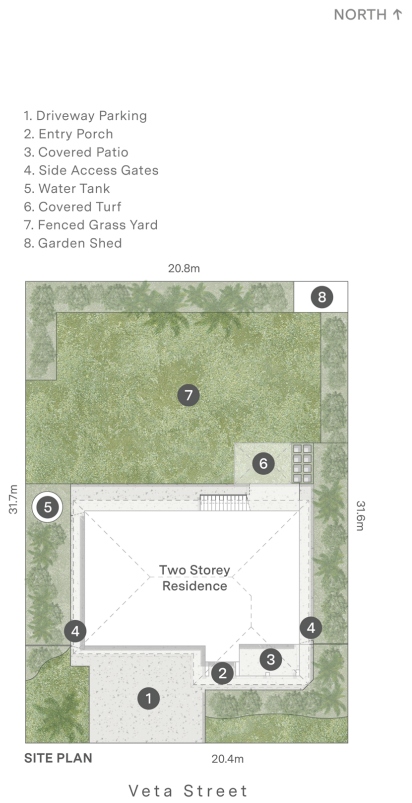
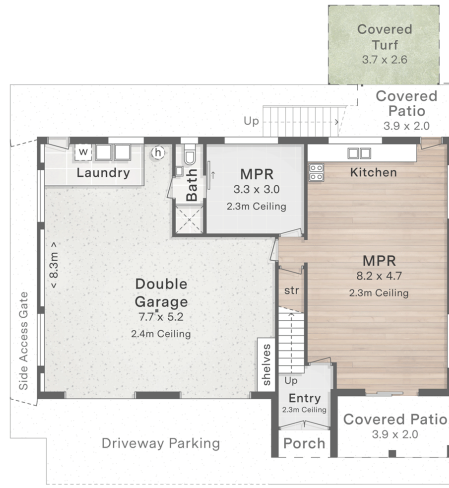
36 Veta Street
Robertson

- 663m² Land Size
- 3 Bed + 2 MPR
- 2 Bath
- 2 Car + Off-Street

Internal 242m²
Balconies 18m²
Patios & Porch 16m²
Total 276m²



DISCLAIMER: This is not a legal document therefore all measurements and information provided is subject to survey. No permission is given to use or alter this Floor Plan without the consent of FloorScape. The overall presentation style, layout, imagery, fonts, background, colours and terminology has been originally created by FloorScape and is subject to strict copyright. No ownership is taken of building design. Find out more at floorscape.au



1. Driveway Parking
2. Entry Porch
3. Covered Patio
4. Side Access Gates
5. Water Tank
6. Covered Turf
7. Fenced Grass Yard
8. Garden Shed