

35 Lingle Street, Robertson

Big Family Home with Dual Opportunity in Blue-Chip Robertson

Set in one of Robertson's most desirable tree-lined streets, this solid brick and tile residence delivers exceptional space, flexibility, and lifestyle convenience on a generous 625m² allotment. With five bedrooms, multiple living zones, separate entry potential, and a versatile two-level design, this is the kind of home that grows with your family.

Whether you're upsizing, accommodating extended family, or seeking future rental flexibility, 35 Lingle Street presents a rare opportunity in a tightly held pocket just moments from every major convenience.

Top 5 Features at a Glance:

1. Prime Robertson address in a quiet, sought-after street.
2. Five bedrooms, two bathrooms, multiple living zones.
3. Functional dual-level layout with excellent separation.
4. Ground-floor kitchen plus handy upper-level kitchenette-laundry.
5. Walk to shops & amenities within Robertson State School catchment.

5 🏠 2 🚿 2 🚗

FOR SALE
Under Contract | \$3.1M

VIEW
By Appointment

AGENTS
Emily Xiong
0401 056 588
emilyxiong@ljhpp.com.au

AGENCY
LJ Hooker Property Partners
07 3344 0288

All information contained therein is gathered from relevant third parties sources. We cannot guarantee or give any warranty about the information provided. Interested parties must rely solely on their own enquiries.

 **LJ Hooker**

Behind a wide frontage with excellent off-street parking, this highset home presents classic proportions and enduring construction. Inside, the ground floor has been designed for everyday functionality and versatility, featuring a large living area, separate dining space, bathroom, laundry, and an additional fifth bedroom or media room positioned near the front entry.

A spacious second living or rumpus zone at the front creates excellent flexibility for teenagers, guests, home business use, or multi-generational living. With internal separation and direct access options, this level offers genuine adaptability rarely found in homes of this era.

The main kitchen is also positioned on the ground floor and serves as the central hub of the home, complete with wraparound benchtops, extensive cabinetry, breakfast bar, and direct connection to the covered patio and backyard.

Upstairs is dedicated primarily to family accommodation, featuring four generously sized bedrooms, all with excellent proportions. Built-in robes and air-conditioning feature throughout selected rooms, while the spacious master retreat opens directly onto the elevated front balcony - the perfect place to enjoy morning sunshine and leafy street outlooks. Decorative cornices and large windows add charm and natural light throughout the upper level.

Outside, a covered rear patio creates a private setting for entertaining or relaxed weekend dining, while the grassy backyard offers room for children, pets, or future landscaping improvements. The block also includes side access, additional driveway parking, and a detached double garage at the rear.

The location here is truly exceptional. Walk to Sunnybank Central, Market Square, Sunnybank Plaza, Sunny Park Shopping Centre, Times Square and Sunnybank Private Hospital. You're also only minutes from Westfield Mt Gravatt, Upper Mt Gravatt business precincts, city buses, major transport links, and Robertson Village conveniences.

Families will also appreciate inclusion within the highly regarded Robertson State School catchment.

Solid, spacious, and packed with future potential in one of Brisbane's most consistently in-demand suburbs, this is a rare buying opportunity not to be missed.

Contact Emily Xiong today to arrange your inspection or secure your place at auction.

All information contained herein is gathered from sources we consider to be reliable. However, we cannot guarantee or give any warranty about the information provided and interested parties must solely rely on their own enquiries.

Asia-Pacific Group (Australia) Pty Ltd with Sunnybank Districts P/L
T/A LJ Hooker Property Partners
ABN 39 831 978 227 / 21 107 068 020

MORE DETAILS

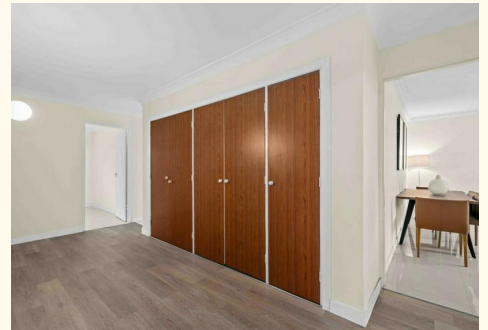
Property ID	B4P7F4R
Property Type	House
Land Area	625 m2
Including	Air Conditioning
	Balcony
	Deck
	Built-in-Robes
	Secure Parking

Emily Xiong 0401 056 588

Agent/Independent Contractor | emilyxiong@ljhpp.com.au

LJ Hooker Property Partners 07 3344 0288

25 Pinelands Road, SUNNYBANK HILLS QLD 4109
propertypartners.ljhooker.com.au | sunnybankhills@ljhpp.com.au



All information contained therein is gathered from relevant third parties sources.
We cannot guarantee or give any warranty about the information provided.
Interested parties must rely solely on their own enquiries.

35 Lingle Street
Robertson

- 625m² Land Size
- 5 Bed
- 2 Bath
- 2 Car + Off Street

Internal 305m²
Patio, Balcony & Porch 47m²
Garage 30m²
Total 382m²



FloorScape
DISCLAIMER: This is not a legal document therefore all measurements and information provided is subject to survey. No permission is given to use or alter this Floor Plan without the consent of FloorScape. The overall presentation style, layout, imagery, fonts, background, colours and terminology has been originally created by FloorScape and is subject to strict copyright. No ownership is taken of building design. Find out more at floorscape.au



FIRST FLOOR
2.5m Ceiling



GROUND FLOOR
2.5m Ceiling

1. Driveway Parking
2. Driveway
3. Entry Porch
4. Side Access Gate
5. Grass Yards
6. Covered Patio



SITE PLAN
Lingle Street