



Robertson, 23 Janda Street

SOLD BY ALEX FAN

Built to stand the test of time, this solid brick beauty on an 819m2 block is a testament to quality craftsmanship and timeless design. Tucked into one of Robertson's finest streets, this sprawling single-level residence is ready for its next chapter - whether that's a stylish renovation, a luxurious upgrade, or simply moving in and enjoying the space and charm as is.

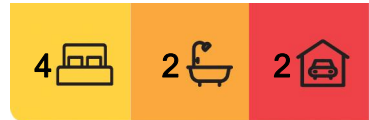
Features at a glance:

1. Expansive 819m2 flat block - a rare find in this premium Robertson locale.
2. Multiple living areas with a built-in bar in the family rumpus.
3. Well-maintained interiors with huge renovation potential to add value.
4. Alfresco entertaining space overlooking lush gardens and a private backyard.
5. Walking distance to Sunnybank Plaza, city-bound buses, and top-rated schools.

A Grand Welcome



Disclaimer: All information contained therein is gathered from relevant third parties sources. We cannot guarantee or give any warranty about the information provided. Interested parties must rely solely on their own enquiries.



For Sale
Please Call

View
ljhooker.com.au/B2WAF4R

Contact
Alex Fan
0451 106 888
alexfan@ljhpp.com.au

LJ Hooker Property Partners
07 3344 0288

From the moment you step onto the property, you're greeted by a charming, tree-lined frontage and a beautifully manicured front yard, setting the tone for what lies beyond. The wide, arbour-ed entryway and tiled front patio lead to a welcoming foyer, where the classic design and spacious layout unfold before you.

Inside, the home boasts multiple living zones designed for both formal and relaxed family living. The lounge room, framed by elegant archways, provides a cosy retreat, while the open-plan living and dining areas offer space to gather, unwind, and create lasting memories. The built-in bar in the family rumpus room adds a touch of old-world charm, making it the perfect spot for hosting guests.

A Kitchen with Character

At the heart of the home lies the retro-style timber kitchen, offering a unique blend of functionality and nostalgia. Expansive countertops, ample cabinetry, and a large window overlooking the garden make this space both practical and inviting. Whether you choose to embrace its vintage charm or modernise with contemporary finishes, this generously sized kitchen is the perfect canvas for your dream culinary space.

Adjacent to the kitchen, the spacious laundry and storage room provides extra utility space and direct outdoor access, making household tasks effortless.

A Backyard Built for Endless Possibilities

Stepping outside, you'll be captivated by the sheer size and beauty of this backyard. The manicured gardens wrap around the home, creating a tranquil, private oasis.

This expansive outdoor space offers endless opportunities - whether it's hosting alfresco dinners under the pergola, adding a pool for summer fun, or designing the ultimate family playground. The double carport, garden shed, and water tank add practicality, while the generous front yard provides extra space for landscaping, additional parking, or future enhancements.

This is one of the few remaining blocks of this size in Robertson, making it a dream property for renovators, investors, and growing families alike.

Rest & Retreat - Spacious Bedrooms & Classic Bathrooms

Four well-appointed bedrooms ensure plenty of space for the whole family. The master suite boasts a walk-in robe and ensuite, while the additional three bedrooms all feature built-in robes. The main bathroom includes a separate shower and bathtub, offering convenience for busy households.

Prime Location, Endless Potential

Positioned in one of Robertson's most desirable streets, this home is just a short stroll to Sunnybank Plaza, Market Square, and express city buses. With Macgregor State High, Robertson State School, and Griffith University all within easy reach, this location offers both lifestyle convenience and investment appeal.

An Unmissable Opportunity

Whether you're an owner-occupier looking for space and lifestyle, a renovator seeking a dream project, or an astute investor wanting capital growth, this home ticks all the boxes. Don't miss out on this once-in-a-generation opportunity - contact Alex Fan today!



LJ Hooker Property Partners
07 3344 0288

Disclaimer: All information contained therein is gathered from relevant third parties sources. We cannot guarantee or give any warranty about the information provided. Interested parties must rely solely on their own enquiries.

All information contained herein is gathered from sources we consider to be reliable. However, we cannot guarantee or give any warranty about the information provided and interested parties must solely rely on their own enquiries.

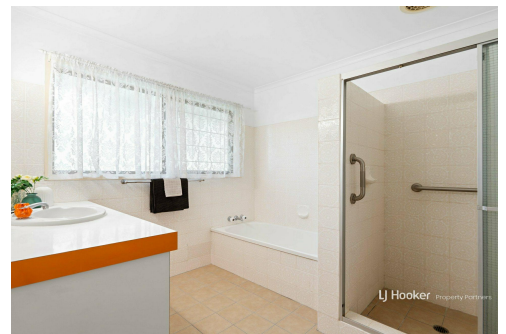
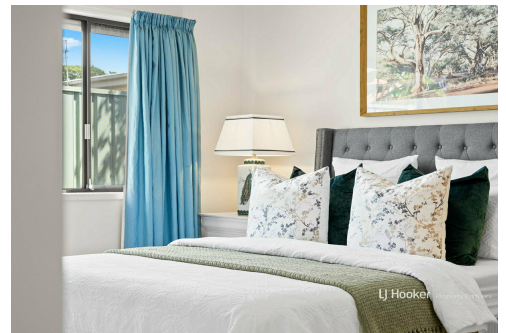
Fans Real Estate Pty Ltd with Sunnybank Districts P/L T/A LJ Hooker Property Partners
ABN 74 512 885 661 / 21 107 068 020

More About this Property

Property ID	B2WAF4R
Property Type	House
Land Area	819 m2
Including	Ensuite Toilets (2) Courtyard Dishwasher Outdoor Entertaining Built-in-Robes Fully Fenced Water Tank

Alex Fan 0451 106 888
Agent/Independent Contractor | alexfan@ljhpp.com.au

LJ Hooker Property Partners 07 3344 0288
25 Pinelands Road, SUNNYBANK HILLS QLD 4109
propertypartners.ljhooker.com.au | sunnybankhills@ljhpp.com.au

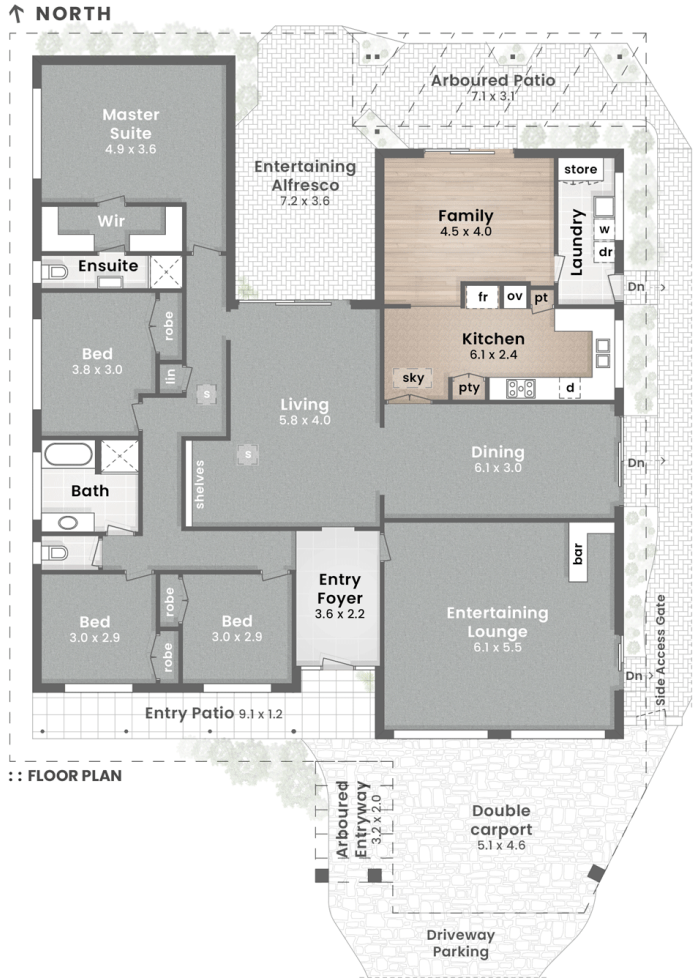


Disclaimer: All information contained therein is gathered from relevant third parties sources. We cannot guarantee or give any warranty about the information provided. Interested parties must rely solely on their own enquiries.

LJ Hooker Property Partners
07 3344 0288

SITE PLAN LEGEND

- 1. Driveway Parking | 2. Double Carport | 3. Arbour'd Entryway
- 4. Entry Patio | 5. Water Tank | 6. Open-Air Patio
- 7. Hills Hoist | 8. Entertaining Alfresco | 9. Arbour'd Patio
- 10. Garden Shed | 11. Fenced Grass Yard



LJ Hooker
Property Partners

23 Janda Street
ROBERTSON

Internal 230m² | Alfresco, Patios & Entryway 61m² | Carport 27m² | Total 318m²

🏠 819m²
🛏 4 Bed
🛁 2 Bath
🚗 2 Car + Off-Street

DISCLAIMER: This is not a legal document therefore all measurements and information provided is subject to survey. No permission is given to use or alter this Floor Plan without the consent of Pure Design Concepts. The overall presentation style, layout, imagery, fonts, background, colours and terminology has been originally created by PDC and is subject to strict copyright. No ownership is taken of building design. Find out more at puredesignconcepts.com.au

pdc.