

Rivervale, 311/60 Riversdale Road

RESORT-STYLE LIVING!

Proudly presented by Edward Lim...

Discover this exceptional one-bedroom apartment in the resort-style Vantage Apartments, where luxury meets stunning design and direct riverfront access. Experience unparalleled amenities and modern facilities that offer you the lifestyle you've always dreamed of.

This modern, spacious apartment beautifully blends convenience and comfort. Upon entering, you'll be greeted by an open-plan living, dining, and kitchen area that makes entertaining a pleasure. Slide open the glass doors to reveal a generous 40m² courtyard, perfect for hosting gatherings or unwinding after a busy day.

The kitchen is a culinary dream, featuring ample storage, a breakfast bar, sleek appliances, and a layout designed for effortless cooking. The master suite includes a walk-in robe and direct access to the outdoor courtyard, enhancing your living experience.



Disclaimer: All information contained therein is gathered from relevant third parties sources. We cannot guarantee or give any warranty about the information provided. Interested parties must rely solely on their own enquiries.



For Sale

** FROM \$459 K ++

View

ljhooker.com.au/5EUAFFB

Contact

Edward Lim

0408 929 655

edward.lim@ljhvicpark.com.au

**LJ Hooker Victoria Park | Belmont
(WA)
(08) 9473 7777**

The stylish bathroom showcases a frameless glass shower, a floating basin, and built-in storage for added elegance. A cleverly concealed laundry area, storeroom, and dedicated parking bay complete the apartment's convenience and functionality.

But the allure doesn't stop there. Enjoy lightning-fast internet with NBN connectivity, ensuring seamless online activities. Plus, a reverse-cycle split air conditioning system promises refreshing coolness in summer and cosy warmth in winter.

And let's not forget the plethora of amenities the complex offers. Enjoy the convenience of an in-house concierge, welcoming waiting areas, residents' lounge, and a theatre room. Stay active in the fully equipped gym, unwind in the sauna or steam bath, and relax in the heated spa or the exquisite 15-metre infinity-edge pool, beautifully framed by natural stone and lush landscaping on a spacious deck with a built-in kitchen and BBQ.

Don't miss the rooftop cinema and terrace, perfect for entertaining while soaking in breathtaking sunrises and sunsets over the city and river. This is a lifestyle you won't want to miss!

The Property and What we Love!

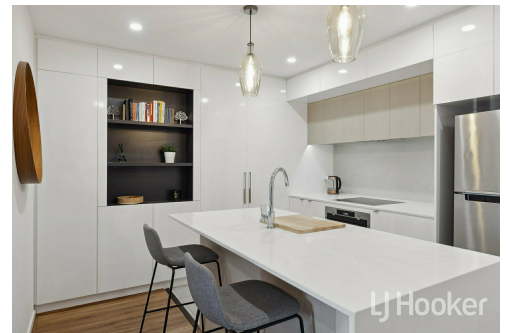
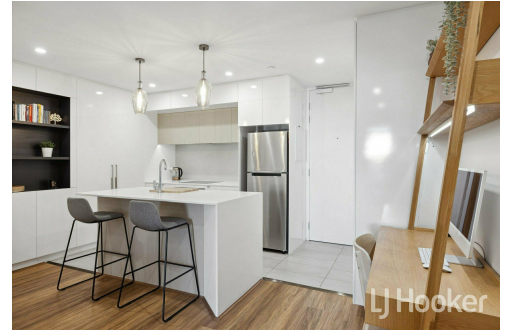
- * Year Built: 2019
- * Build Up Area: 111m2 (including Living: 53m2, Courtyard: 40m2, Storage: 4m2, Car Bay: 14m2)
- * Open plan kitchen, living and dining
- * Large bedroom with walk-in robe
- * Gourmet kitchen with waterfall edge benchtop, modern appliances, ample cabinetry and breakfast bar
- * Spacious courtyard
- * Split system air conditioning

More About this Property

Property ID	5EUAFFB
Property Type	Apartment
Including	Air Conditioning Toilets (1) Pool Spa Courtyard Gym Dishwasher Outdoor Entertaining Secure Parking

Edward Lim 0408 929 655
Sales Consultant | edward.lim@ljhvicpark.com.au

LJ Hooker Victoria Park | Belmont (WA) (08) 9473 7777
288 Albany Highway, VICTORIA PARK WA 6100
victoriapark-belmontwa.ljhooker.com.au | reception@ljhvicpark.com.au



Disclaimer: All information contained therein is gathered from relevant third parties sources. We cannot guarantee or give any warranty about the information provided. Interested parties must rely solely on their own enquiries.

LJ Hooker Victoria Park | Belmont (WA) (08) 9473 7777

A16 - 1 bed x 1 bath

APARTMENT NUMBERS

32, 47, 62, 77, 92, 107, 122, 137

APARTMENT DETAILS

Bedroom	1
Bathroom	1
Car Bays	1
Store Room (min.)	4m ²

TOTAL LIVING AREA

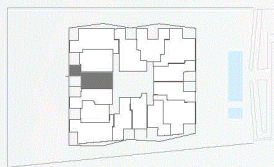
Balcony	10m ² , 41m ² (137)
Total Living Area	69m ² , 100m ² (137)

DESIGNER STATEMENT

This very nicely configured apartment features a logical and distinctive layout to the kitchen, laundry and space for study. The large island bench in the kitchen forms an outstanding living hub. The master bedroom is also benefits from generous storage options.

LEVEL

Level 3 & Typical Level 4-10



RIVER FRONT

Note: plans are not to scale. All areas shown are measured Architectural Areas. The areas refer to the apartment illustrated and these dimensions and areas are approximate and are subject to change without notice. The wardrobes and built-in furniture represented in grey is included. All loose furniture and planters are not included. Architectural Areas will differ from areas shown on the Strata Plan.