

Riverstone, 3 Dodman Glade

Oversized Townhouse Zoned for Schofields Public School

Sanjeev Kumar and the LJ Hooker Schofields team are thrilled to present 3 Dodman Glade —a stunning home offering the perfect balance of modern style and comfort. Ideally located in a highly sought-after area, this property is an ideal sanctuary for families seeking both convenience and elegance.

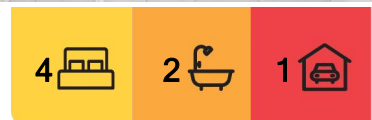
This bright and inviting home boasts a beautifully designed kitchen, complemented by an open-plan dining area that seamlessly flows to the outdoor space, allowing natural light to fill every corner.

The indoor-outdoor living space and spacious backyard are perfect for family gatherings, making this home a great option for growing families, investors, or first-time buyers looking to enter the market.

Property Highlights:



Disclaimer: All information contained therein is gathered from relevant third parties sources. We cannot guarantee or give any warranty about the information provided. Interested parties must rely solely on their own enquiries.



For Sale

Just Listed - \$899,000 - \$950,000

View

Thu 1st May @ 5:20PM - 5:40PM

Contact

Sanjeev Kumar

0433 289 620

sanjeev.kumar@ljhooker.com.au

Kit Patel

0466 412 920

kit.patel@ljhooker.com.au

LJ Hooker Schofields
02 9157 4077

- Spacious 4 bedroom, 2 bathroom home with powder room downstairs
- Generously sized living room, ideal for entertaining and relaxation
- Stylish, functional kitchen with a contemporary design
- High-quality Westinghouse appliances, including a 900mm cooktop
- Elegant laminate flooring upstairs and tiled downstairs
- Low-maintenance backyard with a pergola and deck —perfect for outdoor entertaining
- 2-zone ducted air conditioning for comfort year-round
- Blinds throughout for privacy
- Luxurious bathrooms with floor-to-ceiling tiles
- Tranquil master bedroom with an ensuite and plenty of natural light
- Single automated garage
- 6.5 kw Solar Panels
- Prime location close to parks, shopping centres, and transport links
- Zoned for Schofields Public School

Location Features:

- Approx. 2km to Riverstone Swimming Centre
- Approx. 2.8km to Riverstone Station
- Approx. 3.9km to Schofields Station
- Approx. 3.7km to Schofields Village
- Approx. 4.3km to Tallawong Metro
- Approx. 6km to Rouse Hill Town Centre
- Approx. 7.9km to Sydney Business Park (Costco, Ikea, Aldi, Bunnings, and more)

Schools & Education:

- Approx. 1.9km to Schofields Public School
- Approx. 800m to Riverstone High School
- Approx. 3.1km to St Joseph's Primary School
- Approx. 4.9km to St John Paul II Catholic College

Don't miss out on the opportunity to secure this modern gem in a prime location. Contact Sanjeev Kumar and Kit Patel today to schedule your private viewing.

DISCLAIMER:

This advertisement contains information provided by third parties. While every care is taken to ensure its accuracy, LJ Hooker Schofields does not guarantee the information's accuracy and recommends that prospective buyers conduct their own inquiries. All images are for illustrative purposes only.



LJ Hooker Schofields
02 9157 4077

Disclaimer: All information contained therein is gathered from relevant third parties sources. We cannot guarantee or give any warranty about the information provided. Interested parties must rely solely on their own enquiries.

More About this Property

Property ID	3R5HXY
Property Type	Townhouse
Including	Air Conditioning Built-in-Robes Secure Parking

Sanjeev Kumar 0433 289 620

Director | Licensee | sanjeev.kumar@ljhooker.com.au

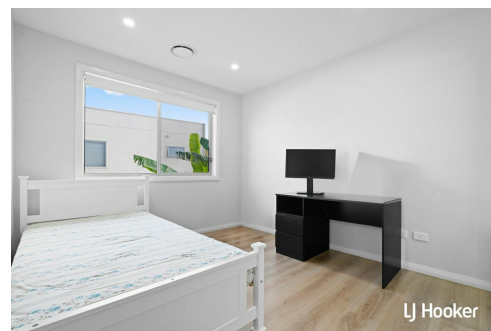
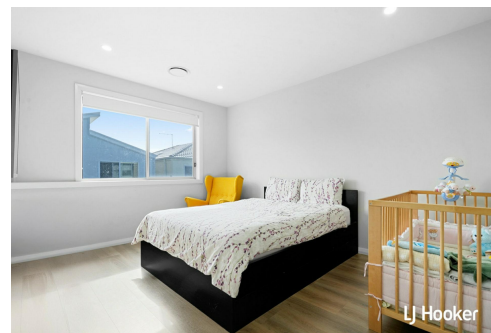
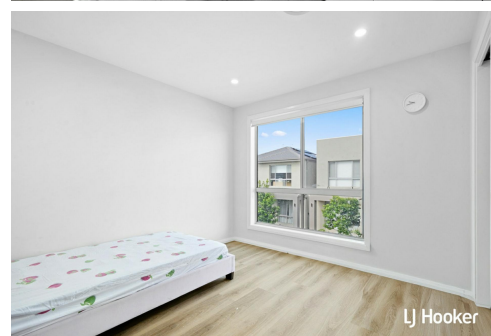
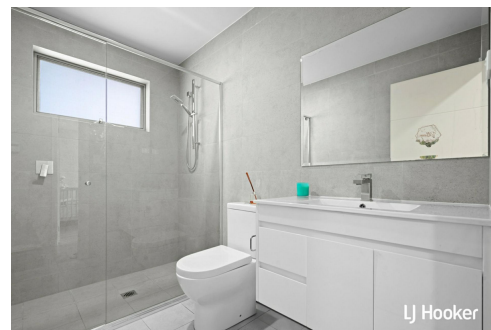
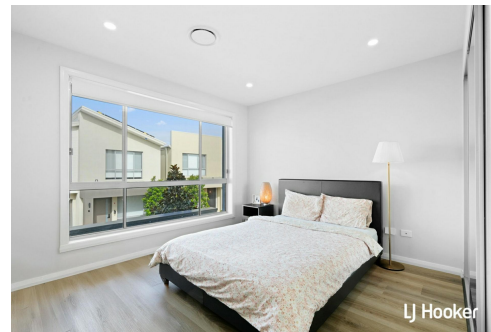
Kit Patel 0466 412 920

Sales Associate | kit.patel@ljhooker.com.au

LJ Hooker Schofields 02 9157 4077

Shop 35, 111 Railway Terrace, SCHOFIELDS NSW 2762

schofields.ljhooker.com.au | schofields@ljhooker.com.au

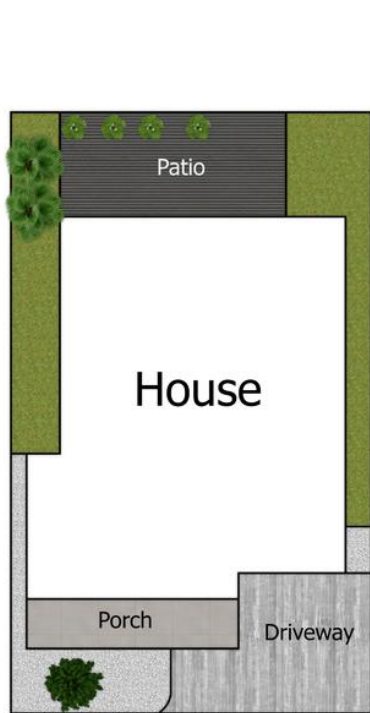


Disclaimer: All information contained therein is gathered from relevant third parties sources.
We cannot guarantee or give any warranty about the information provided. Interested parties must rely solely on their own enquiries.

LJ Hooker Schofields
02 9157 4077



3 Dodman Glade, Riverstone



Siteplan



Ground Floor



First Floor

Floorplan

DISCLAIMER:

This floor plan is used for marketing purpose only and is subject to errors and inaccuracy. The marketing Agent & N2 Media will not accept any liability. Interested parties should make and rely on their own enquiries.



LJ Hooker Schofields
02 9157 4077

Disclaimer: All information contained therein is gathered from relevant third parties sources. We cannot guarantee or give any warranty about the information provided. Interested parties must rely solely on their own enquiries.