



## Riverstone, 18 Nalah Glade

ANOTHER SOLD BY SANJEEV KUMAR RIVERSTONE & GRANTHAM FARM SPECIALIST 0433 289 620 FOR DETAILS

Sanjeev Kumar, Kit Patel, and the team at LJ Hooker are excited to present this beautifully designed east-facing 4-bedroom freestanding townhouse in the heart of Riverstone. With a modern and functional floor plan, this home features spacious bedrooms, contemporary bathrooms, and an abundance of natural light throughout. The flexible layout, including a bedroom and bathroom on the ground floor, makes this property perfect for families, investors, or first-time homebuyers looking for comfort and convenience.

Located in a highly sought-after area, 18 Nalah Glade offers easy access to local schools, parks, and transport options. The open-plan kitchen and dining area seamlessly flow to the private backyard, creating a fantastic space for entertaining or relaxing. With its low-maintenance design and light-filled living areas, this property presents an incredible opportunity to secure a home in a growing community.



**Disclaimer:** All information contained therein is gathered from relevant third parties sources. We cannot guarantee or give any warranty about the information provided. Interested parties must rely solely on their own enquiries.



**For Sale**  
Just Listed \$890,000 to \$940,000 - Under Contract

**View**  
[ljhooker.com.au/3K0HXy](https://ljhooker.com.au/3K0HXy)

**Contact**  
**Sanjeev Kumar**  
0433 289 620  
[sanjeev.kumar@ljhooker.com.au](mailto:sanjeev.kumar@ljhooker.com.au)

**Kit Patel**  
0466 412 920  
[kit.patel@ljhooker.com.au](mailto:kit.patel@ljhooker.com.au)

**LJ Hooker Schofields**  
02 9157 4077

#### Key Features:

- East-facing orientation for abundant natural light throughout the day
  - Separate, generously sized lounge and dining areas
  - Modern open-plan kitchen with 40mm stone benchtops
  - Master bedroom with ensuite and built-in wardrobe
  - Four spacious bedrooms with mirrored built-in wardrobes
  - One bedroom and bathroom conveniently located downstairs
  - Contemporary bathrooms with floor-to-ceiling tiling and handheld shower head.
  - Stylish wooden flooring throughout (except wet areas)
- vDual-zone ducted air conditioning for year-round comfort
- Video intercom and alarm system for added security
  - Low-maintenance backyard with pergola for outdoor enjoyment
  - Single garage with automatic door and internal access

#### Location Features:

- Approx 2.2km to Riverstone Swimming Centre
- Approx 3 km to Riverstone Station
- Approx 3.7km to Schofields Station
- Approx 3.8km to Schofields Village
- Approx 4.1km to Tallawong Metro
- Approx 5.7km to Rouse Hill Town Centre

#### Schools & Education:

- Approx 1.1km to Riverstone High School
- Approx 1.6km to Schofields Public School
- Approx 2.8km to St Joseph's Primary School
- Approx 4km to St John Paul II Catholic College

Nestled in the ever-evolving suburb of Riverstone, this home offers a vibrant community and excellent access to schools, shops, and transport links. With its modern features, practical layout, and desirable east-facing orientation, it's ready for its new owners to move in and make it their own. Don't miss this amazing opportunity-contact Sanjeev Kumar or Kit Patel today for more information!

\*\*\*\*

**\*DISCLAIMER:** This advertisement contains information provided by third parties. While all care is taken to ensure accuracy, LJ Hooker Schofields does not make any representation regarding the information contained herein, nor accept any responsibility or liability. We recommend clients conduct their own investigations. All images are indicative of the property only.

## More About this Property

<b>Property ID</b>	3K0HXY
<b>Property Type</b>	Townhouse
<b>Including</b>	Air Conditioning Built-in-Robes Secure Parking

### Sanjeev Kumar 0433 289 620

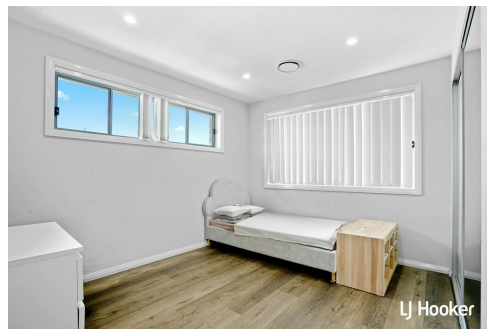
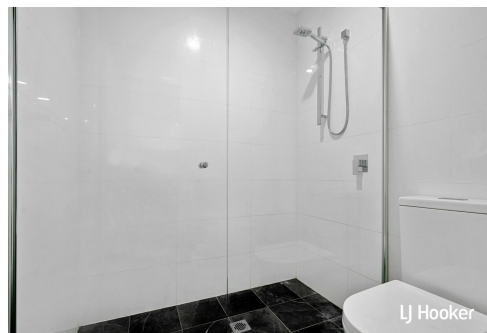
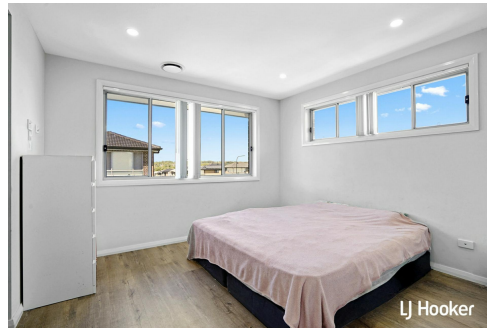
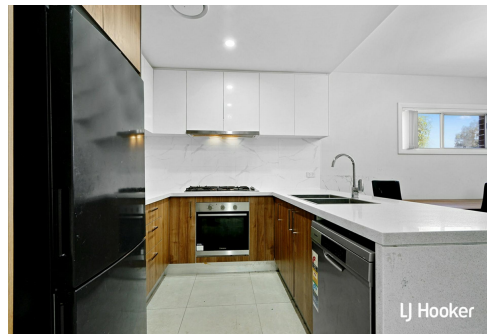
Director | Licensee | [sanjeev.kumar@ljhooker.com.au](mailto:sanjeev.kumar@ljhooker.com.au)

### Kit Patel 0466 412 920

Sales Associate | [kit.patel@ljhooker.com.au](mailto:kit.patel@ljhooker.com.au)

### LJ Hooker Schofields 02 9157 4077

Shop 35, 111 Railway Terrace, SCHOFIELDS NSW 2762  
[schofields.ljhooker.com.au](http://schofields.ljhooker.com.au) | [schofields@ljhooker.com.au](mailto:schofields@ljhooker.com.au)



**Disclaimer:** All information contained therein is gathered from relevant third parties sources. We cannot guarantee or give any warranty about the information provided. Interested parties must rely solely on their own enquiries.

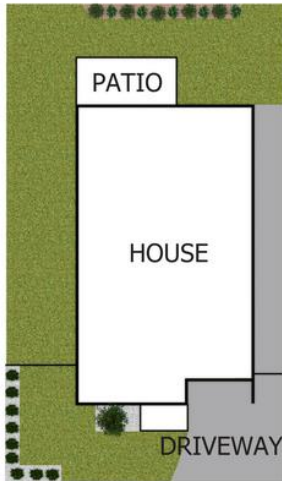
**LJ Hooker Schofields**  
**02 9157 4077**



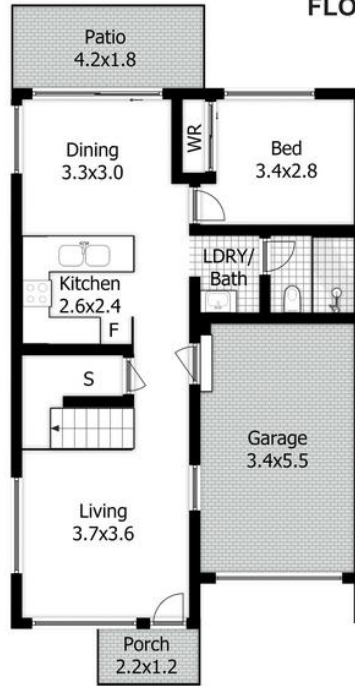
18 Nalah Gld, Riverstone



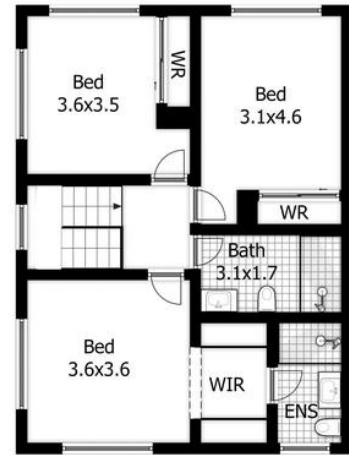
SITE PLAN



FLOOR PLAN



GROUND FLOOR



FIRST FLOOR

**DISCLAIMER:**

This floor plan is used for marketing purpose only and is subject to errors and inaccuracy. The marketing Agent & N2 Media will not accept any liability. Interested parties should make and rely on their own enquiries.



LJ Hooker Schofields  
02 9157 4077

**Disclaimer:** All information contained therein is gathered from relevant third parties sources. We cannot guarantee or give any warranty about the information provided. Interested parties must rely solely on their own enquiries.