



69 Matthias Street, Riverstone

Exception Family Home with an exciting twist

Sanjeev Kumar and the team at LJ Hooker Schofields | Riverstone are proud to present this beautifully maintained home, positioned in the highly sought-after Riverstone neighbourhood. Set on a generous block, this residence showcases quality finishes throughout and has been thoughtfully designed to offer comfort, space, and relaxed family living.

Positioned on a quiet, family-friendly street within easy walking distance to local schools, offering the perfect blend of peace and everyday convenience. Adding further value, the property includes a self-contained studio ideal for rental income or accommodating family and guests.

Features:

- Spacious open-plan kitchen, dining, and living areas designed for seamless family living
- Modern kitchen equipped with gas cooktop, double sink, dishwasher, and walk-in pantry for ample storage
- Master bedroom complete with walk-in robe and private ensuite
- Tiled throughout, complemented by carpeted bedrooms for added comfort

5 🏠 3 🚗 3 🚗

FOR SALE

Just Listed - \$1,330,000 to \$1,375,000

VIEW

Wed 17th Jun @ 6:00PM - 6:20PM

AGENTS

Sanjeev Kumar
0433 289 620
sanjeev.kumar@ljhooker.com.au

Kit Patel
0466 412 920
kit.patel@ljhooker.com.au

AGENCY

LJ Hooker Schofields | Riverstone
02 9157 4077

All information contained therein is gathered from relevant third parties sources.
We cannot guarantee or give any warranty about the information provided.
Interested parties must rely solely on their own enquiries.

 LJ Hooker

Main bathroom featuring a large vanity, toilet, shower, and separate bathtub
Multi-zone ducted air conditioning ensuring year-round climate control
Generous backyard with a large grassed area, ideal for children and pets
Subdivision Potential (Subject to Council Approval)

Location Highlights:

- Approximately 1km to Brightly Early Learning Centre
- Approximately 1.3km to New Maya Park
- Approximately 1.7km to Riverstone Train Station
- Approximately 1.7km to Riverstone Village
- Approximately 1.9km to Edmund Street Basin Park
- Approximately 4.6km to Schofields Train Station
- Approximately 5.9km to Tallawong Metro Station

School Catchment:

- Approximately 700m to St John's Primary School
- Approximately 1.1km to Norwest Christian College
- Approximately 1.2km to Riverstone Public School
- Approximately 1.4km to Riverstone High School
- Approximately 10.3km to Wyndham College

Perfectly suited for families, this home is positioned in a welcoming and well-connected pocket of Riverstone with a strong community feel. For more information or to arrange your inspection, contact Sanjeev on 0433 289 620. We look forward to welcoming you at the next inspection.

- ***

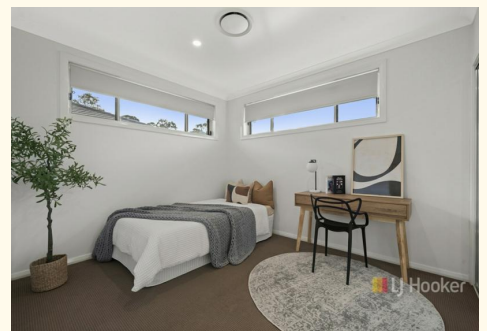
DISCLAIMER: This advertisement contains information provided by third parties. While all care is taken to ensure otherwise, LJ Hooker Schofields does not make any representation as to the accuracy of the information contained in the advertisement, does not accept any responsibility or liability and recommends that any client make their own investigations and inquiries. All images are indicative of the property only. Note Granny Flat/ Grannyflat has potential to be second bedroom. Floor Plan is still being finalised and is not final yet.

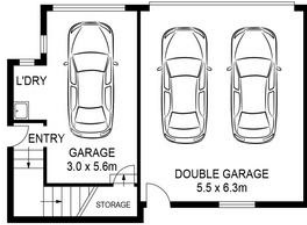
MORE DETAILS

Property ID	4VPHXY
Property Type	House
Including	Air Conditioning Balcony Outdoor Entertaining Built-in-Robes Secure Parking

Sanjeev Kumar 0433 289 620
Director | Licensee | sanjeev.kumar@ljhooker.com.au
Kit Patel 0466 412 920
Sales Associate | kit.patel@ljhooker.com.au

LJ Hooker Schofields | Riverstone 02 9157 4077
Shop 35, 111 Railway Terrace, SCHOFIELDS NSW 2762
schofields.ljhooker.com.au | schofields@ljhooker.com.au





GROUND FLOOR
(GRANNY FLAT)



FIRST FLOOR
(GRANNY FLAT)



GROUND FLOOR



FIRST FLOOR



SITE PLAN (NOT TO SCALE)

