



## Riverstone, 61 George Street

**SOLD BY SANJEEV KUMAR: RIVERSTONE & GRANTHAM FARM SPECIALIST 0433 289 620**

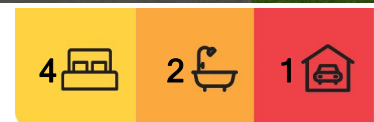
Sanjeev Kumar and the Team at LJ Hooker Schofields are proud to present this amazing property to the market in Riverstone. This home is situated in a sought after pocket close to the train station and shops, and is the one you've been waiting for.

### Features Include:

- Tiled throughout the living area, with carpets in Bedrooms
- Open Plan kitchen, dining and living area
- Ceiling Fans in all four Bedrooms
- Remote control garage
- Great backyard with a big shed perfect for storage
- Amazing outside deck with Alfresco ideal for hosting family and friends
- Good grass area perfect for kids and pets
- Just a few minutes walk to the train station and shops



**Disclaimer:** All information contained therein is gathered from relevant third parties sources. We cannot guarantee or give any warranty about the information provided. Interested parties must rely solely on their own enquiries.



**For Sale**  
SOLD BY SANJEEV

**View**  
[ljhooker.com.au/3KEHXY](http://ljhooker.com.au/3KEHXY)

**Contact**  
**Sanjeev Kumar**  
0433 289 620  
[sanjeev.kumar@ljhooker.com.au](mailto:sanjeev.kumar@ljhooker.com.au)

**LJ Hooker Schofields**  
**02 9157 4077**

- Walking distance to the Riverstone Pools, Riverstone Schofields memorial club

Location Highlights:

- approx. 900m to Riverstone Swimming Centre
- approx. 1.1km walk to Riverstone Train Station
- approx. 1km walk to Riverstone Shopping Centre
- approx. 1.4km to just opened "Maya Park"
- approx. 4.2km to Schofields Train Station
- approx. 4.3km to Schofields Shopping Centre
- approx. 2.9km to Carmel Village Shopping Centre
- approx. 6.3km to Rouse Hill Regional Park
- approx. 6.6km to Tallawong Metro Station

Schools & Education:

- 2.1km to Riverstone Public School
- 2.2km to Norwest Christian School
- 2.3km to Riverstone High School
- 9km to Wyndham College

This home is perfect for families as it is situated in an excellent pocket of Riverstone with a great community! Contact Sanjeev on 0433 289 620 or Leo on 0403 123 199 and book your inspection today. We look forward to meeting you at the next inspection!

\*\*\*

DISCLAIMER: This advertisement contains information provided by third parties. While all care is taken to ensure otherwise, LJ Hooker Schofields does not make any representation as to the accuracy of the information contained in the advertisement, does not accept any responsibility or liability, and recommends that any client make their own investigations and inquiries. All images are indicative of the property only. STCA means subject to council approval.

## More About this Property

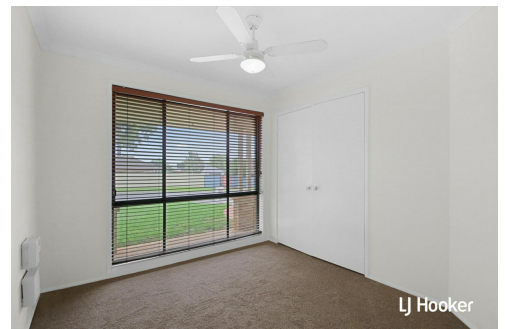
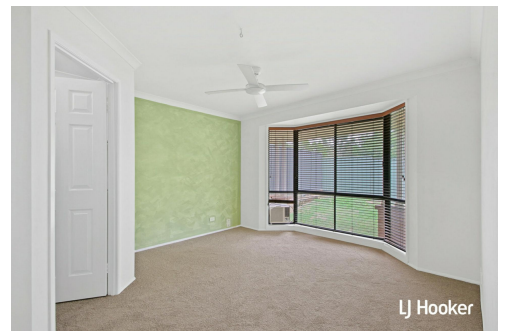
Property ID	3KEHXY
Property Type	House
Including	Outdoor Entertaining Built-in-Robes Secure Parking

**Sanjeev Kumar 0433 289 620**

Director | Licensee | [sanjeev.kumar@ljhooker.com.au](mailto:sanjeev.kumar@ljhooker.com.au)

**LJ Hooker Schofields 02 9157 4077**

Shop 35, 111 Railway Terrace, SCHOFIELDS NSW 2762  
[schofields.ljhooker.com.au](http://schofields.ljhooker.com.au) | [schofields@ljhooker.com.au](mailto:schofields@ljhooker.com.au)



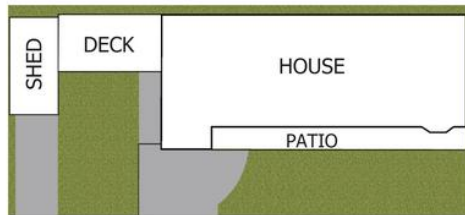
**Disclaimer:** All information contained therein is gathered from relevant third parties sources. We cannot guarantee or give any warranty about the information provided. Interested parties must rely solely on their own enquiries.

**LJ Hooker Schofields**  
**02 9157 4077**

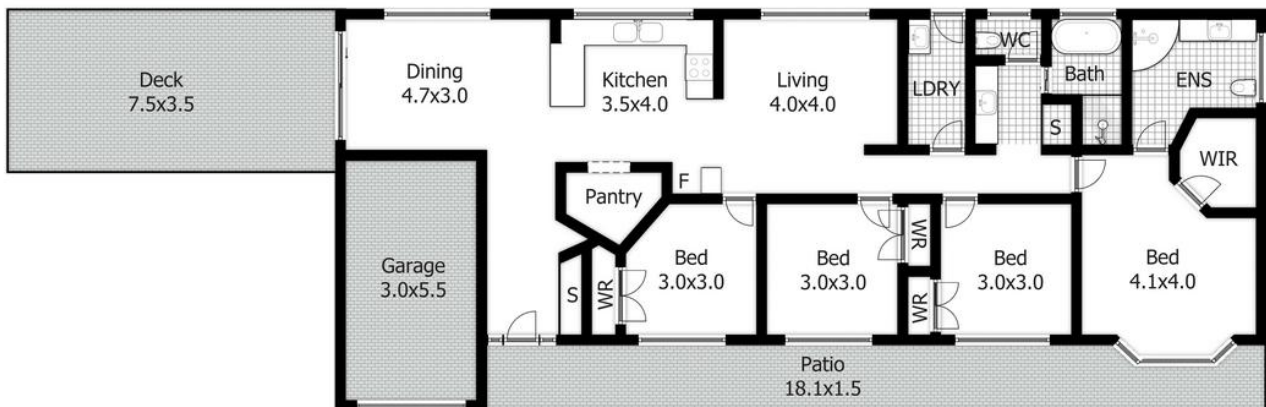




61 George Street, Riverstone



SITE PLAN



FLOOR PLAN

**DISCLAIMER:**

This floor plan is used for marketing purpose only and is subject to errors and inaccuracy. The marketing Agent & N2 Media will not accept any liability. Interested parties should make and rely on their own enquiries.



LJ Hooker Schofields  
02 9157 4077

**Disclaimer:** All information contained therein is gathered from relevant third parties sources. We cannot guarantee or give any warranty about the information provided. Interested parties must rely solely on their own enquiries.