


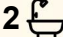



55 Foxall Street (Grantham Farm), Riverstone

SOLD BY SANJEEV KUMAR RIVERSTONE & GRANTHAM FARM SPECIALIST 0433 289 620 FOR DETAILS

Sanjeev Kumar and the team at LJ Hooker Schofields | Riverstone proudly present this charming home with a perfect blend of style, space, and functionality in the heart of Grantham Farm. This beautifully designed 5-bedroom home offers modern living with versatile spaces - ideal for growing families and effortless entertaining.

This home offers four generously sized bedrooms, perfect for a growing family who appreciate simplicity and an abundance of natural light, along with a versatile fifth bedroom or media room located downstairs that is ideal for guests. The stylish contemporary design is enhanced by crisp white ceilings, creating a bright and modern atmosphere throughout. An open-plan layout seamlessly connects the living/sunroom and dining areas, while the beautifully designed kitchen boasts ample bench space and plentiful cabinetry, delivering both functionality and elegant style.

5  2  1 

FOR SALE
SOLD BY SANJEEV

AGENTS

Sanjeev Kumar
0433 289 620
sanjeev.kumar@ljhooker.com.au

AGENCY

LJ Hooker Schofields | Riverstone
02 9157 4077

All information contained therein is gathered from relevant third parties sources.
We cannot guarantee or give any warranty about the information provided.
Interested parties must rely solely on their own enquiries.

 **LJ Hooker**

Property Features -

- Open-Plan Living: - Spacious kitchen, dining and family zone designed for effortless everyday living and entertaining
- Designer Kitchen: Oversized island with pendant lighting, 900mm stainless steel appliances, premium finishes, and abundant storage
- Luxury Master Suite: Features a walk-in robe and a stylish ensuite with
- Modern Bathrooms: Complete with bathtub, shower niche, and full-height tiles for a sleek, contemporary look
- Quality Finishes: High ceilings, LED downlights, and ducted air conditioning
- Outdoor Living: Easy-care yard ideal for family relaxation and outdoor entertaining
- Fully enclosed sunroom for year round outdoor relaxation
- Versatile 5th bedroom or media room, ideal for guests or a second living space
- Solar Panels

Location Highlights -

- 600m to Maya Park
- 1.1km to Proposed Grantham Farm Public School
- 1.5km to Riverstone High School
- 1.8km to Norwest Christian College
- 2.0km to St John's Primary School
- 2.4km to Schofields Station & Shopping Precinct
- 2.7km to Tallawong Metro Station
- 3.5km to Carmel Village Shopping Centre
- 6.5km to Rouse Hill Town Centre
- 8.5km to Sydney Business Park (Costco, IKEA, Bunnings, Aldi & more)

This home is ideally situated close to parks, childcare centres, and a range of family-friendly amenities, offering both convenience and lifestyle. It represents the perfect combination of modern design, family comfort, and a premium location. With its spacious layout, high-quality finishes, and proximity to top schools and transport, this is a rare opportunity to secure a thoughtfully built home.

For more information or to arrange a private inspection, contact Sanjeev Kumar on 0433 289 620 or reach out to the LJ Hooker Schofields | Riverstone team today!

• *

DISCLAIMER: This advertisement contains information provided by third parties. While all care is taken to ensure otherwise, LJ Hooker Schofields does not make any representation as to the accuracy of the information contained in the advertisement, does not accept any responsibility or liability and recommends that any client make their own investigations and inquiries. All images are indicative of the property only.

MORE DETAILS

Property ID 4NWHXY
Property Type House
Including Air Conditioning
Outdoor Entertaining
Built-in-Robes
Secure Parking
Solar Panels

Sanjeev Kumar 0433 289 620

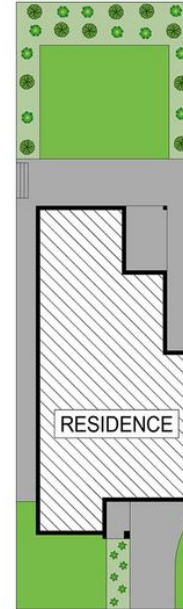
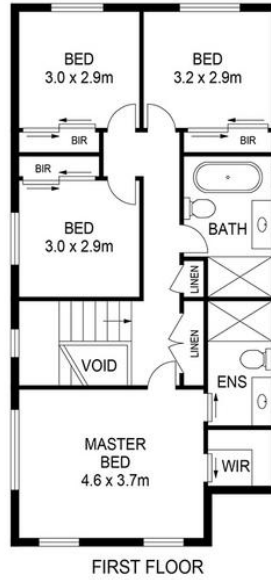
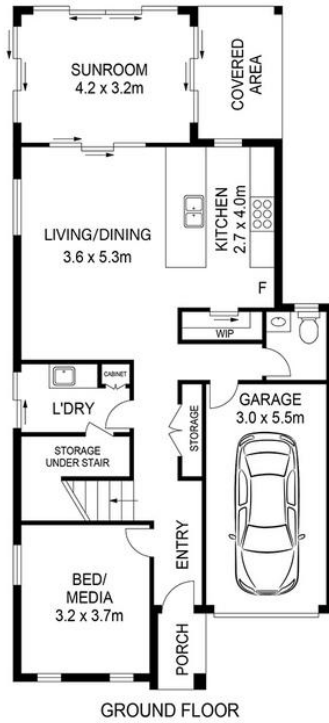
Director | Licensee | sanjeev.kumar@ljhooker.com.au

LJ Hooker Schofields | Riverstone 02 9157 4077

Shop 35, 111 Railway Terrace, SCHOFIELDS NSW 2762
schofields.ljhooker.com.au | schofields@ljhooker.com.au



All information contained therein is gathered from relevant third parties sources.
We cannot guarantee or give any warranty about the information provided.
Interested parties must rely solely on their own enquiries.



55 FOXALL STREET, GRANTHAM FARM



DISCLAIMER DIMENSIONS ARE APPROXIMATE AND SHOULD BE USED AS A GUIDE THEY ARE NOT TO SCALE AND NO LIABILITY BE ACCEPTED. Floor plan by: The House Media Co Pty. Ltd.

All information contained therein is gathered from relevant third parties sources.
We cannot guarantee or give any warranty about the information provided.
Interested parties must rely solely on their own enquiries.

