

53 Foxall Street (Grantham Farm), Riverstone

SOLD BY SANJEEV KUMAR RIVERSTONE & GRANTHAM FARM SPECIALIST 0433 289 620 FOR DETAILS

Sanjeev Kumar and the LJ Hooker Schofields team are proud to present this beautifully appointed residence. Combining style, comfort, and functionality, this modern double-storey home has been thoughtfully designed to meet the needs of today's families. Boasting premium finishes, multiple living zones, and energy-efficient features, it provides the perfect balance of sophistication and practicality.

From the moment you step inside, you'll appreciate the abundance of natural light, high-quality craftsmanship, and versatile layout. Whether you're hosting guests in the spacious open-plan living areas, relaxing in the upstairs rumpus room, every space has been designed for comfort and convenience.

Key Features

- Open-Plan Living: Expansive kitchen, dining, and family area creating a seamless flow for everyday living and entertaining
- Stylish Kitchen: Large island benchtop with pendant lighting,

4 2 2

FOR SALE
SOLD BY SANJEEV

AGENTS

Sanjeev Kumar
0433 289 620
sanjeev.kumar@ljhooker.com.au

AGENCY

LJ Hooker Schofields | Riverstone
02 9157 4077

All information contained therein is gathered from relevant third parties sources.
We cannot guarantee or give any warranty about the information provided.
Interested parties must rely solely on their own enquiries.



900mm stainless steel appliances, ample cabinetry, and premium finishes

- Multiple Living Areas: Second living room and upstairs rumpus room
- Luxurious Master Suite: Includes walk-in wardrobe, double vanity ensuite, and elegant floor-to-ceiling tiles
- Bathrooms: Modern design with bathtub, shower niche, and floor-to-ceiling tiling for a sleek, contemporary feel
- Comfort Throughout: Four-zone ducted air conditioning with multi-control settings and carpeted stairs/upper level for warmth and ease
- Quality Touches: High ceilings, LED downlights, and generous natural light across both levels
- Outdoor Living: Low-maintenance yard perfect for family enjoyment and outdoor entertaining

Location Highlights

- 600m to Maya Park
- 1.1km to Proposed Grantham Farm Public School
- 1.5km to Riverstone High School
- 1.8km to Norwest Christian College
- 2.0km to St John's Primary School
- 2.4km to Schofields Station & Shopping Precinct
- 2.7km to Tallawong Metro Station
- 3.5km to Carmel Village Shopping Centre
- 6.5km to Rouse Hill Town Centre
- 8.5km to Sydney Business Park (Costco, IKEA, Bunnings, Aldi & more)

Nearby parks, childcare centres, and family-friendly amenities

This home represents the ideal blend of modern design, family comfort, and premium location. With its spacious layout, high-end finishes, and proximity to top schools and transport, this is a rare opportunity to secure a quality-built home.

For more information or to book your inspection, contact Sanjeev Kumar on 0433 289 620 or the LJ Hooker Schofields team today - we look forward to welcoming you home!

- *

DISCLAIMER: This advertisement contains information provided by third parties. While all care is taken to ensure otherwise, LJ Hooker Schofields does not make any representation as to the accuracy of the information contained in the advertisement, does not accept any responsibility or liability and recommends that any client make their own investigations and inquiries. All images are indicative of the property only.

MORE DETAILS

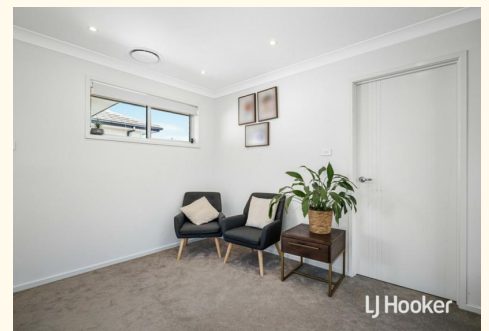
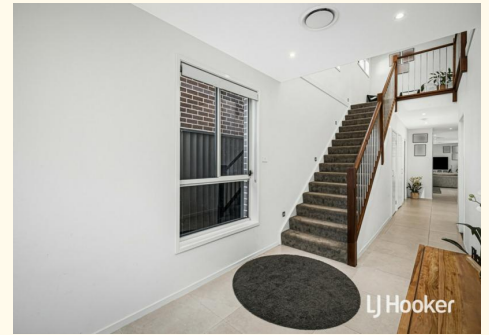
Property ID 4JEHXY
Property Type House
Land Area 300 m2
Including Air Conditioning
Dishwasher
Outdoor Entertaining
Floorboards
Solar Panels

Sanjeev Kumar 0433 289 620

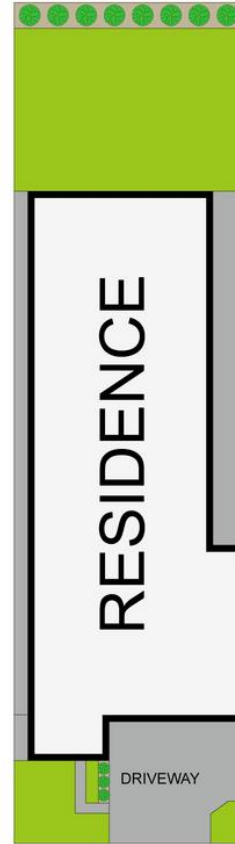
Director | Licensee | sanjeev.kumar@ljhooker.com.au

LJ Hooker Schofields | Riverstone 02 9157 4077

Shop 35, 111 Railway Terrace, SCHOFIELDS NSW 2762
schofields.ljhooker.com.au | schofields@ljhooker.com.au



All information contained therein is gathered from relevant third parties sources.
We cannot guarantee or give any warranty about the information provided.
Interested parties must rely solely on their own enquiries.



0 1 2 3 4 5
SCALE (METRES)

53 Foxall Street, Riverstone

Disclaimer: Floor plans and site plans are intended as a guide only. They are not part of any legal document or title and are subject to errors, omission, and inaccuracies and should not be used as reference. Sizes and dimensions are approximate only. Interested parties should make their own enquiries. Floor plan by: Sync Studios Pty Ltd



All information contained therein is gathered from relevant third parties sources. We cannot guarantee or give any warranty about the information provided. Interested parties must rely solely on their own enquiries.

