

39 Matthias Street, Riverstone

SOLD BY SANJEEV KUMAR - RIVERSTONE & GRANTHAM FARM SPECIALIST

Sanjeev Kumar and the team at LJ Hooker Schofields are proud to present 39 Matthias Street, Riverstone - a beautifully crafted single-storey residence built by Fowler Homes, offering an exceptional blend of modern design, comfort, and functionality.

Showcasing a spacious open-plan layout with quality finishes throughout, this home is ideal for families, downsizers, or investors seeking a low-maintenance lifestyle in a highly sought-after location. Thoughtfully designed and impeccably presented, it provides a peaceful retreat with a generous backyard and an array of premium inclusions that enhance everyday living.

Property Features:

- Generously sized bedrooms with built-in wardrobes
- Master suite complete with walk-in robe and a luxurious ensuite featuring a super-sized shower
- Versatile media room / 4th bedroom, ideal for a home theatre, guest room or home office
- Contemporary gourmet kitchen with quality smeg appliances, gas

3 2 2

FOR SALE
UNDER CONTRACT 1ST WEEK ON
MARKET \$1,190,000

AGENTS

Sanjeev Kumar
0433 289 620
sanjeev.kumar@ljhooker.com.au

AGENCY

LJ Hooker Schofields | Riverstone
02 9157 4077

All information contained therein is gathered from relevant third parties sources.
We cannot guarantee or give any warranty about the information provided.
Interested parties must rely solely on their own enquiries.

LJ Hooker

- cooktop, island benchtop with breakfast bar, soft-close cupboards throughout, and stylish pendant lighting above
- Swiss Krono Aquastop Laminate Flooring Spotted Gum flooring throughout, offering durability and modern appeal
- Open-plan living and dining area with gas bayonet in the lounge room
- Stylish bathrooms with modern fittings and finishes, including a bathtub in the main bathroom
- " Seamless indoor—outdoor flow to a covered alfresco area in the backyard, perfect for entertaining
- Low-maintenance backyard featuring capsicum, curry leaf, chilli plants, and Passionfruit Vine
- Double remote-control garage with internal access, garage shelving, plus a loft above the garage providing excellent additional storage
- Two-zone ducted Actron Air Conditioning, ensuring year-round comfort and efficiency
- 5ft Digital Two Stage Safe

Location features:

- Approx 1.2km to Maya Park
- Approx 1.6km to Riverstone Station & Riverstone village
- Approx 1.8km to Edmund Street Basin Park
- Approx 3.9km to Carmel Village Shopping Centre
- Approx 5.5km to Schofields Station & Schofields Village
- Approx 5.8km to Tallawong Metro
- Approx 7.5km to Rouse Hill Town Centre
- Approx 8.9km Sydney Business Park (Costco, Ikea, Aldi, Bunnings and more)

Schools & Education:

- Approx. 600m to St Johns Primary School
- Approx 900m to Riverstone Public School
- Approx 1km to Norwest Christian College
- Approx 1.2km to Riverstone High School

Positioned close to local schools, shops, parks, and transport, this quality Fowler Homes build offers an outstanding opportunity to secure a modern family home in a thriving community. Contact Sanjeev to book an inspection today.

- ***

DISCLAIMER: This advertisement contains information provided by third parties. While all care is taken to ensure otherwise, LJ Hooker Schofields | Riverstone does not make any representation as to the accuracy of the information contained in the advertisement, does not accept any responsibility or liability, and recommends that any client make their own investigations and inquiries. Note the property is a 3 bedroom with potential for fourth bedroom. All images are indicative of the property only.

MORE DETAILS

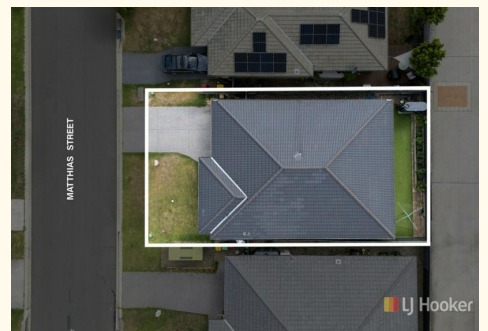
Property ID 4SHHXY
Property Type House
Including Air Conditioning
Outdoor Entertaining
Built-in-Robes
Secure Parking

Sanjeev Kumar 0433 289 620

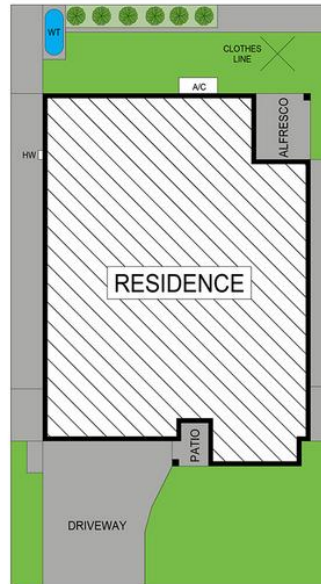
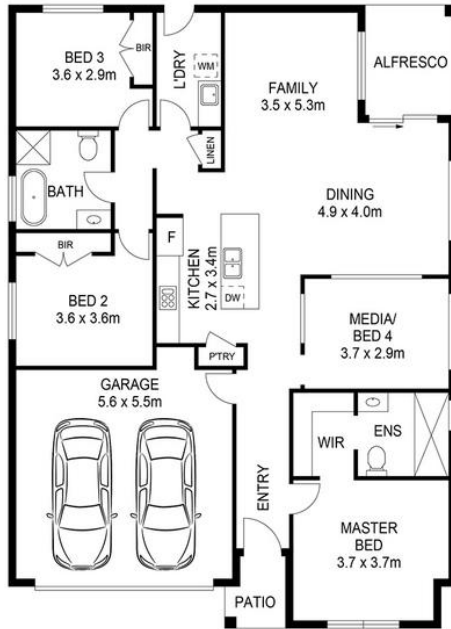
Director | Licensee | sanjeev.kumar@ljhooker.com.au

LJ Hooker Schofields | Riverstone 02 9157 4077

Shop 35, 111 Railway Terrace, SCHOFIELDS NSW 2762
schofields.ljhooker.com.au | schofields@ljhooker.com.au



All information contained therein is gathered from relevant third parties sources.
We cannot guarantee or give any warranty about the information provided.
Interested parties must rely solely on their own enquiries.



SITE PLAN (NOT TO SCALE)



39 MATTHIAS STREET, RIVERSTONE



DISCLAIMER DIMENSIONS ARE APPROXIMATE AND SHOULD BE USED AS A GUIDE THEY ARE NOT TO SCALE AND NO LIABILITY BE ACCEPTED. Floor plan by: The House Media Co Pty. Ltd.

All information contained therein is gathered from relevant third parties sources. We cannot guarantee or give any warranty about the information provided. Interested parties must rely solely on their own enquiries.

