



30 Mudiman Glade, Riverstone

## Stylish North-East Facing Family Home | Zoned for Schofields Public School

Sanjeev Kumar, Kit Patel, and the LJ Hooker Schofields | Riverstone team proudly present 30 Mudiman Glade, a beautifully appointed north-east facing residence designed to deliver modern comfort, quality enhancements, and effortless indoor-outdoor living. Set across two thoughtfully designed levels, this home is perfect for families seeking space, style, and low maintenance living in a growing and well-connected community.

Step inside to a spacious lounge that immediately welcomes you with warmth and comfort, flowing seamlessly into an open plan kitchen and dining area designed for both everyday living and entertaining. The contemporary kitchen is equipped with upgraded pantry shelving and provision for a double door fridge, while the layout extends effortlessly to an impressive outdoor setting featuring an extended pergola, timber decking, astro turf, and a private spa-perfect for hosting family and friends all year round.

Upstairs, the home offers generous accommodation, including a well-appointed master retreat complete with a private ensuite and balcony

All information contained therein is gathered from relevant third parties sources. We cannot guarantee or give any warranty about the information provided. Interested parties must rely solely on their own enquiries.

3 2 1

### FOR SALE

Just Listed

### VIEW

Sat 2nd May @ 1:00PM - 1:20PM

### AGENTS

Sanjeev Kumar  
0433 289 620  
sanjeev.kumar@ljhooker.com.au

Kit Patel  
0466 412 920  
kit.patel@ljhooker.com.au

### AGENCY

LJ Hooker Schofields | Riverstone  
02 9157 4077

LJ Hooker

access, enhanced by plantation shutters for added privacy and comfort. The remaining bedrooms are well-sized and serviced by stylish bathrooms featuring premium inclusions such as floor-to-ceiling tiles and a bidet, adding a touch of luxury to everyday living.

#### Property Features

- North-east facing aspect, Spa Included
- Four spacious bedrooms with built-in wardrobes
- Master bedroom with ensuite and private balcony with shutters
- Spacious front lounge flowing seamlessly into an open plan kitchen and dining area, ideal for everyday living and entertaining
- Modern kitchen with upgraded pantry shelving & double door fridge space
- Two well-appointed bathrooms with floor-to-ceiling tiles & bidet
- Additional powder room on ground floor
- Linen press with upgraded storage
- Covered alfresco with extended pergola
- Outdoor decking area with spa
- Low-maintenance backyard with astro turf
- Lanai flooring enhancing outdoor appeal
- Single garage with built-in storage solutions
- Plantation shutters throughout
- Balcony providing additional relaxation space

#### Location Highlights

- Approx. 2.2km to Riverstone Swimming Centre
- Approx. 2.9km to Riverstone Station
- Approx. 3.8km to Schofields Station
- Approx. 4km to Schofields Village
- Approx. 4.1km to Tallawong Metro
- Approx. 5.8km to Rouse Hill Town Centre
- Approx. 8km to Sydney Business Park (Costco, IKEA, Aldi, Bunnings and more)

#### Schools & Education

- Approx. 1km to Riverstone High School
- Approx. 1.6km to Norwest Christian College
- Approx. 1.7km to Schofields Public School
- Approx. 2.8km to St Joseph's Primary School
- Approx. 5.4km to St John Paul II Catholic College

Whether you are upsizing, investing, or entering the market, 30 Mudiman Glade presents a fantastic opportunity to secure a quality home in a rapidly growing and well-connected location.

Contact Sanjeev Kumar, Kit Patel or the LJ Hooker Schofields | Riverstone team today to arrange your inspection.

• \*\*\*

**DISCLAIMER:** This advertisement contains information provided by third parties. While all care is taken to ensure otherwise, LJ Hooker Schofields | Riverstone does not make any representation as to the accuracy of the information contained in the advertisement, does not accept any responsibility or liability, and recommends that any client make their own investigations and inquiries. All images are indicative of the property only and may include virtual furniture, styling, or digital enhancements for illustrative purposes.

## MORE DETAILS

Property ID 552HXY  
Property Type House  
Including Air Conditioning  
Spa  
Outdoor Entertaining  
Secure Parking

### Sanjeev Kumar 0433 289 620

Director | Licensee | [sanjeev.kumar@ljhooker.com.au](mailto:sanjeev.kumar@ljhooker.com.au)

### Kit Patel 0466 412 920

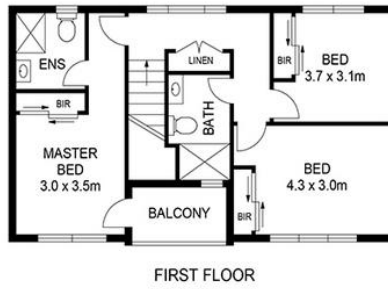
Sales Associate | [kit.patel@ljhooker.com.au](mailto:kit.patel@ljhooker.com.au)

### LJ Hooker Schofields | Riverstone 02 9157 4077

Shop 35, 111 Railway Terrace, SCHOFIELDS NSW 2762  
[schofields.ljhooker.com.au](http://schofields.ljhooker.com.au) | [schofields@ljhooker.com.au](mailto:schofields@ljhooker.com.au)



All information contained therein is gathered from relevant third parties sources.  
We cannot guarantee or give any warranty about the information provided.  
Interested parties must rely solely on their own enquiries.



DISCLAIMER DIMENSIONS ARE APPROXIMATE AND SHOULD BE USED AS A GUIDE THEY ARE NOT TO SCALE AND NO LIABILITY BE ACCEPTED. Floor plan by: The House Media Co Pty. Ltd.

All information contained therein is gathered from relevant third parties sources.  
 We cannot guarantee or give any warranty about the information provided.  
 Interested parties must rely solely on their own enquiries.

