



22 Trippe Street (Grantham Farm), Riverstone

**SOLD AT AUCTION BY  
SANJEEV KUMAR RIVERSTONE  
& GRANTHAM FARM  
SPECIALIST 0433 289 620 FOR  
DETAILS**

Auction Location: On Site

Sanjeev Kumar and the team at LJ Hooker Schofields are proud to present 22 Trippe Street, Grantham Farm.

Step into style, space, and convenience with this beautifully crafted single-level home in the heart of Grantham Farm. 22 Trippe Street offers an exceptional opportunity for families, first-home buyers, or investors looking for a modern, low-maintenance lifestyle without compromise.

Thoughtfully designed with both elegance and everyday functionality in mind, this home features high-quality finishes, a versatile layout, and a sought-after position near local schools, shops, parks, and public transport, this property is a true gem in a growing community.

4 2 2

**FOR SALE**  
SOLD BY SANJEEV

**AGENTS**

Sanjeev Kumar  
0433 289 620  
sanjeev.kumar@ljhooker.com.au

Josh Simpson  
josh.simpson@ljhooker.com.au

**AGENCY**

LJ Hooker Schofields | Riverstone  
02 9157 4077

All information contained therein is gathered from relevant third parties sources.  
We cannot guarantee or give any warranty about the information provided.  
Interested parties must rely solely on their own enquiries.



#### Features Include -

- Private Master Suite: Generously sized with a walk-in wardrobe and an en-suite.
- Spacious Bedrooms: All additional bedrooms come with built-in wardrobes to keep things neat and organised.
- Versatile Living Room: Perfect as a second living area or can easily convert into a fifth bedroom.
- Gourmet Kitchen: Designed to inspire with premium appliances, gas cooktop, and ample bench space.
- Alfresco Entertaining: Seamless flow to the covered outdoor area, ideal for relaxing or entertaining, with a low-maintenance garden.
- Modern Bathrooms: Stylish and functional with top-quality fixtures and finishes.
- Climate Control: Multi-zone ducted air conditioning ensures comfort all year round.
- Secure Parking & Storage: Double remote garage with internal access and plenty of extra space.

#### Location Highlights -

- Approx 650m walk to new opened Maya Park
- Approx 2km to Riverstone Station
- Approx 2.3km to Carmel Village Shopping Centre
- Approx 5.9km to Tallawong Metro
- Approx 5.5km to Schofields Station
- Approx 5.6km to Schofields Village
- Approx 7.8km to Rouse Hill Town Centre
- Approx 9km Sydney Business Park (Costco, Ikea, Aldi, Bunnings and more)

#### Schools & Education:

- Approx 1.6km to Riverstone Public School
- Approx 1.7km to Norwest Christian College
- Approx 2km to Riverstone High School
- Approx 9.6km to Wyndham College

Welcome to a place where family dreams become a reality. Don't miss this incredible opportunity. Call Sanjeev on 0433 289 620 for more information. We look forward to seeing you at the open home.

- \*

**DISCLAIMER:** This advertisement contains information provided by third parties. While all care is taken to ensure otherwise, LJ Hooker Real Estate Services Pty Ltd does not make any representation as to the accuracy of the information contained in the advertisement, does not accept any responsibility or liability and recommends that any client make their own investigations and inquiries. All images are indicative of the property only.

## MORE DETAILS

Property ID 437HXY  
Property Type House  
Including Air Conditioning  
Outdoor Entertaining  
Built-in-Robes  
Secure Parking

### Sanjeev Kumar 0433 289 620

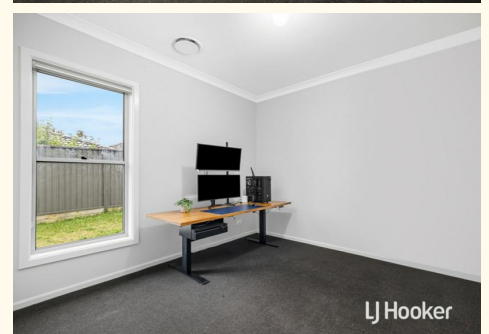
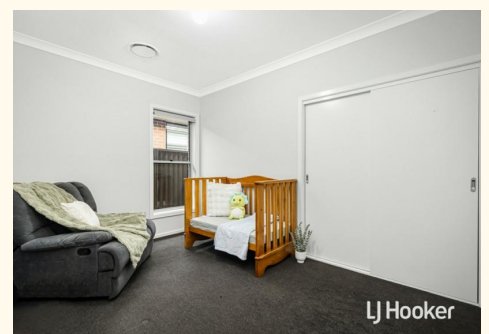
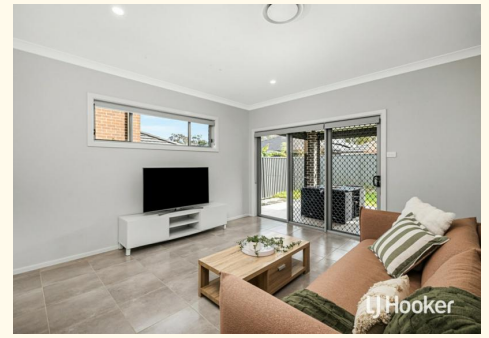
Director | Licensee | [sanjeev.kumar@ljhooker.com.au](mailto:sanjeev.kumar@ljhooker.com.au)

### Josh Simpson

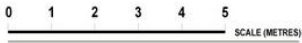
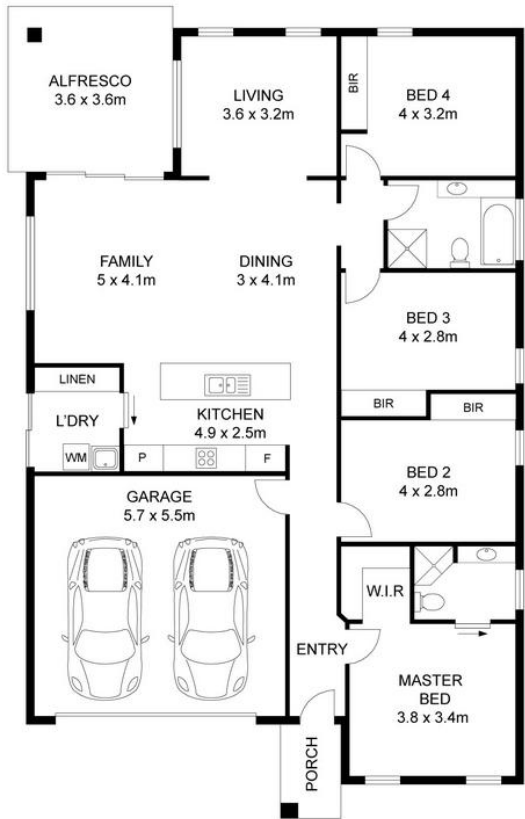
Sales Executive | [josh.simpson@ljhooker.com.au](mailto:josh.simpson@ljhooker.com.au)

### LJ Hooker Schofields | Riverstone 02 9157 4077

Shop 35, 111 Railway Terrace, SCHOFIELDS NSW 2762  
[schofields.ljhooker.com.au](http://schofields.ljhooker.com.au) | [schofields@ljhooker.com.au](mailto:schofields@ljhooker.com.au)



All information contained therein is gathered from relevant third parties sources.  
We cannot guarantee or give any warranty about the information provided.  
Interested parties must rely solely on their own enquiries.



## 22 Trippe Street, Riverstone

**Disclaimer:** Floor plans and site plans are intended as a guide only. They are not part of any legal document or title and are subject to errors, omission, and inaccuracies and should not be used as reference. Sizes and dimensions are approximate only. Interested parties should make their own enquiries. Floor plan by : Sync Studios Pty Ltd

