

22 Jemima Street, Riverstone

## **SOLD BY SANJEEV KUMAR RIVERSTONE & GRANTHAM FARM SPECIALIST 0433 289 620 FOR DETAILS**

Sanjeev Kumar and Kav Prasad at LJ Hooker Schofields | Riverstone proudly present this stylish and contemporary four-bedroom, double-storey home at 22 Jemima Street, Riverstone.

Built in 2022 and positioned in a quiet cul-de-sac, this beautifully finished residence is ideal for families seeking space, quality and modern comfort, while remaining close to local amenities and transport options. Thoughtfully designed with a functional layout and premium inclusions, this home offers a perfect balance of style and practicality.

### Key Features Include:

- High ceilings of 2.7m on both floors
- Double-storey construction with a full bedroom and bathroom located downstairs, ideal for guests or extended family
- Designer kitchen enhanced by a skylight, quality appliances and generous storage

4 🏠 3 🚿 2 🚗

**FOR SALE**  
SOLD IN ONE WEEK BY SANJEEV KUMAR

### AGENTS

Sanjeev Kumar  
0433 289 620  
sanjeev.kumar@ljhooker.com.au

Kav Prasad  
0423 046 793  
kav.prasad@ljhooker.com.au

### AGENCY

LJ Hooker Schofields | Riverstone  
02 9157 4077

All information contained therein is gathered from relevant third parties sources. We cannot guarantee or give any warranty about the information provided. Interested parties must rely solely on their own enquiries.

 **LJ Hooker**

- Second skylight positioned in the void, creating exceptional natural light and a sense of openness
- Highly finished bathrooms with floor-to-ceiling tiles throughout
- Spacious master bedroom with built-in robes and private ensuite
- Remaining bedrooms well sized and fitted with built-in wardrobes
- Air conditioning for year-round comfort
- Quiet cul-de-sac location in a family-friendly neighbourhood
- Garage features epoxy flooring
- Beautiful garden with citrus, olive and curry leaf trees.
- 9.25kw solar panels
- Hardwired security cameras

#### Location Highlights:

- 1.5km Approx. to Riverstone Station & Village
- 2.9km Approx. to Schofields Station
- 2.9km Approx. to Schofields Shops
- 5.2km Approx. to Tallawong Metro & Village
- 7.3km Approx. to Rouse Hill Town Centre
- 6.6km Approx. to Costco, Ikea, Aldi, Bunnings and more
- 6.5km Approx. to The Ponds Shopping Centre

#### School Catchment:

- 900m Approx. to Riverstone High School
- 1.3km Approx. to Riverstone Public School
- 1.3km Approx. to Norwest Christian College
- 1.5km Approx. to St Johns Primary School
- 8.4km Approx. to Wyndham College

An opportunity like this won't last long on the market, call Sanjeev Kumar on 0433 289 620 now to make an offer!

• \*

**DISCLAIMER:** This advertisement contains information provided by third parties. While all care is taken to ensure otherwise, LJ Hooker Schofields does not make any representation as to the accuracy of the information contained in the advertisement, does not accept any responsibility or liability, and recommends that any client make their own investigations and inquiries. All images are indicative of the property only.

## MORE DETAILS

Property ID	4U7HXY
Property Type	House
Land Area	312.3 m2
Including	Air Conditioning Deck Dishwasher Outdoor Entertaining Built-in-Robes Secure Parking Solar Panels

### Sanjeev Kumar 0433 289 620

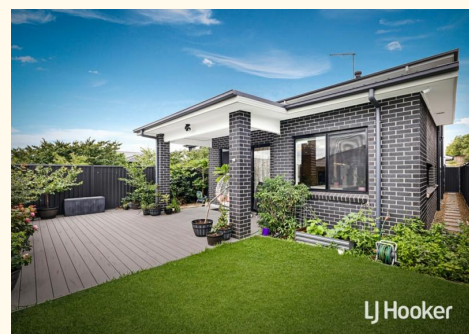
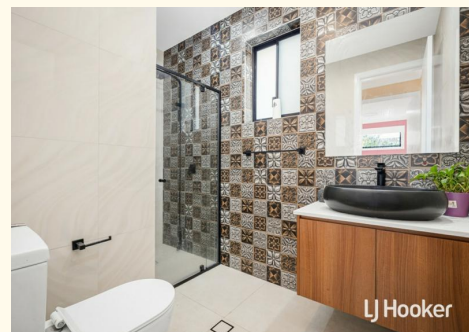
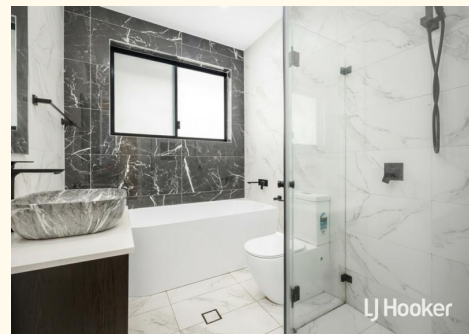
Director | Licensee | sanjeev.kumar@ljhooker.com.au

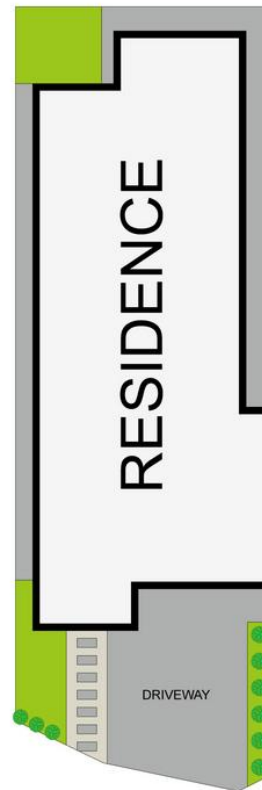
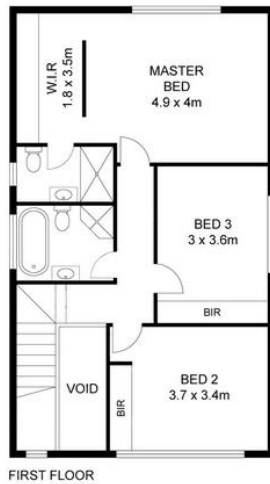
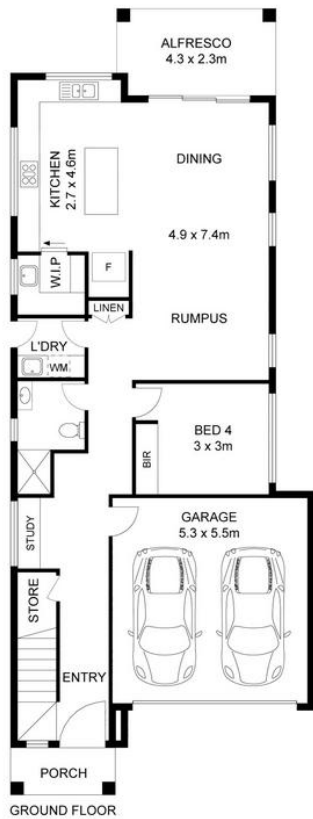
### Kav Prasad 0423 046 793

Sales Executive | kav.prasad@ljhooker.com.au

### LJ Hooker Schofields | Riverstone 02 9157 4077

Shop 35, 111 Railway Terrace, SCHOFIELDS NSW 2762  
schofields.ljhooker.com.au | schofields@ljhooker.com.au





0 1 2 3 4 5  
SCALE (METRES)

## 22 Jemima Street, Riverstone

**Disclaimer:** Floor plans and site plans are intended as a guide only. They are not part of any legal document or title and are subject to errors, omission, and inaccuracies and should not be used as reference. Sizes and dimensions are approximate only. Interested parties should make their own enquiries. Floor plan by : Sync Studios Pty Ltd

