




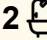
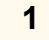
164A Princes Street (Grantham Farm), Riverstone

SOLD OFF MARKET IN THREE DAYS BY SANJEEV KUMAR | RIVERSTONE & GRANTHAM FARM SPECIALIST 0433 289 620

Sanjeev Kumar and the team at LJ Hooker are delighted to present this stunning double-storey home, perfectly designed for modern family living. Situated in the sought-after and family-friendly community of Grantham Farm, this beautifully maintained home combines contemporary style, comfort, and convenience. Ideal for first-home buyers and savvy investors alike, it offers generous interiors, quality finishes, and a versatile floor plan.

This Family Home Features:

- Master bedroom with walk-in robe and a luxury ensuite with double vanity
- Two other bedrooms upstairs and a study/ guest bedroom downstairs
- Spacious open-plan living and dining seamlessly connected to the kitchen
- Sleek, well-appointed kitchen with stainless steel appliances, gas cooking, expansive Caesar stone bench tops, ample storage, and

4  2  1 

FOR SALE

SOLD by Sanjeev Kumar

AGENTS

Sanjeev Kumar

0433 289 620

sanjeev.kumar@ljhooker.com.au

Josh Simpson

josh.simpson@ljhooker.com.au

AGENCY

LJ Hooker Schofields | Riverstone

02 9157 4077

All information contained therein is gathered from relevant third parties sources.

We cannot guarantee or give any warranty about the information provided.

Interested parties must rely solely on their own enquiries.

 **LJ Hooker**

- a separate walk-in pantry
- Dedicated study area with potential to convert into a fourth bedroom
- Large main bathroom featuring separate shower, bathtub, and private toilet
- Guest powder room downstairs and internal laundry
- Automatic lock-up garage with remote control and internal access
- Outdoor alfresco area, perfect for entertaining
- Torrens Title (No Strata)
- High ceilings throughout
- Walk-in linen cupboard
- Solar Panels (18 Panels) with 5kw Inverter
- Featuring alarm system for added security and ducted air conditioning for all year round comfort

Location Highlights:

- Walking distance to the new park on Grantham Street
- 220m Approx. to Grantham Farm Estate Shops
- 2.2km Approx. to Carmel Village Shopping Centre
- 2.5km Approx. to Vineyard Train Station
- 3.3km Approx. to Riverstone Train Station
- 6.5km Approx. to Schofields Station and Shops
- 7.9km Approx. to Tallawong Metro Station
- 9.3km Approx. to The Ponds Shopping Centre
- 9.8km Approx. to Rouse Hill Town Centre
- 10km Approx. to Costco, IKEA, Aldi, Bunnings, and more
- 12km Approx. to TAFE NSW Nirimba

School Catchments:

- Riverstone Public School 3.1km Approx.
- Riverstone High School 3.3km Approx.
- Wyndham College 10.9km Approx.

Perfectly positioned in a growing and vibrant suburb, this exceptional home is close to quality schools, major shopping hubs, transport links, and local parks. Don't miss out on this opportunity, contact Sanjeev Kumar today to arrange your private inspection and see all this home has to offer!

- *

DISCLAIMER: This advertisement contains information provided by third parties. While all care is taken to ensure otherwise, LJ Hooker Schofields does not make any representation as to the accuracy of the information contained in the advertisement, does not accept any responsibility or liability and recommends that any client make their own investigations and inquiries. All images are indicative of the property only.

MORE DETAILS

Property ID 49NHXY
Property Type House
Land Area 243 m2
Including Air Conditioning
Outdoor Entertaining
Built-in-Robes
Secure Parking

Sanjeev Kumar 0433 289 620

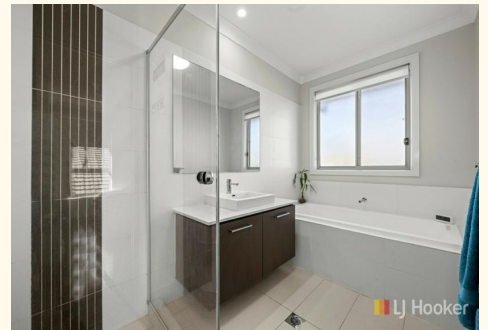
Director | Licensee | sanjeev.kumar@ljhooker.com.au

Josh Simpson

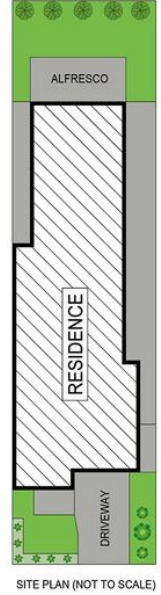
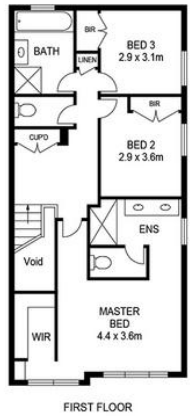
Sales Executive | josh.simpson@ljhooker.com.au

LJ Hooker Schofields | Riverstone 02 9157 4077

Shop 35, 111 Railway Terrace, SCHOFIELDS NSW 2762
schofields.ljhooker.com.au | schofields@ljhooker.com.au



All information contained therein is gathered from relevant third parties sources.
We cannot guarantee or give any warranty about the information provided.
Interested parties must rely solely on their own enquiries.



164A PRINCES STREET, GRANTHAM FARM



DISCLAIMER DIMENSIONS ARE APPROXIMATE AND SHOULD BE USED AS A GUIDE THEY ARE NOT TO SCALE AND NO LIABILITY BE ACCEPTED. Floor plan by: The House Media Co Pty. Ltd.

All information contained therein is gathered from relevant third parties sources. We cannot guarantee or give any warranty about the information provided. Interested parties must rely solely on their own enquiries.

