



LJ Hooker



LJ Hooker



LJ Hooker

10-12 Jack Street, Riverstone

## 1334sqm Prime Location Site with Great Potential

Sanjeev Kumar and the team at LJ Hooker Schofields are very proud to present the stunning Cassola House located in the heart of Riverstone. Featuring a fantastic 1,334sqm land size, 10 Jack Street will impress you with its location to Riverstone Train Station and its 41m frontage. This exciting home offers great potential.

The features of this home include but are not limited to:

- High Ceilings, Extra Large Deck and Porch
- Free Standing electric oven and cooktop, Split System Air Conditioning
- Multiple bedrooms with beautiful cottage characteristics
- Walking distance to Riverstone Train Station
- Potential for Medical Facility, Child Care (35-40 kids), Cafe, Dental Clinic, Cosmetic Clinic, Boarding House & Group Homes (S.T.C.A.)
- Heaps of space for parking

Location Features:

- 1.1km Approx. to Riverstone Train Station
- 1.2km Approx. to Riverstone Shops, (IGA, Post Office, Commonwealth Bank, Cafe & Restaurants)
- Less than 1.5km Approx. to Riverstone Public School, Riverstone

All information contained therein is gathered from relevant third parties sources. We cannot guarantee or give any warranty about the information provided. Interested parties must rely solely on their own enquiries.

4 🏠 1 🚗 0 🚘

**FOR SALE**

Just Listed \$1,750,000 to \$1,900,000

**VIEW**

By Appointment

**AGENTS**

Sanjeev Kumar

0433 289 620

sanjeev.kumar@ljhooker.com.au

**AGENCY**

LJ Hooker Schofields | Riverstone

02 9157 4077

 **LJ Hooker**

- High School, & Norwest Christian College
- 1.5km Approx. to Schofields Shops (Limestone Cafe, Cafe Chicheti, Schofields Medical & Dental)
- 7.1km Approx. to Rouse Hill Town Centre and Rouse Hill Metro

Call Sanjeev Kumar today on 0433 289 620 to discuss this amazing opportunity!

- \*

**DISCLAIMER:** This advertisement contains information provided by third parties. While all care is taken to ensure otherwise, LJ Hooker Schofields does not make any representation as to the accuracy of the information contained in the advertisement, does not accept any responsibility or liability, and recommends that any client make their own investigations and inquiries. All images are indicative of the property only. All potential uses of the property are subject to Council. Agency notes the home is a Heritage Listed Property. STCA means Subject to Council Approval.

## MORE DETAILS

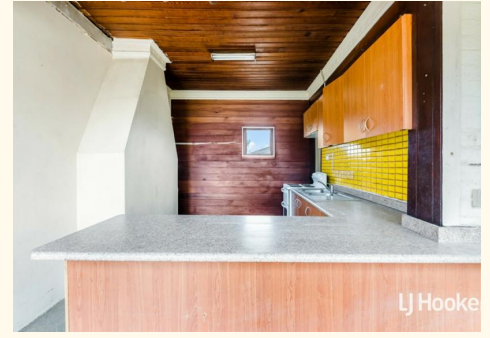
Property ID	554HXY
Property Type	House
Land Area	1334 m2

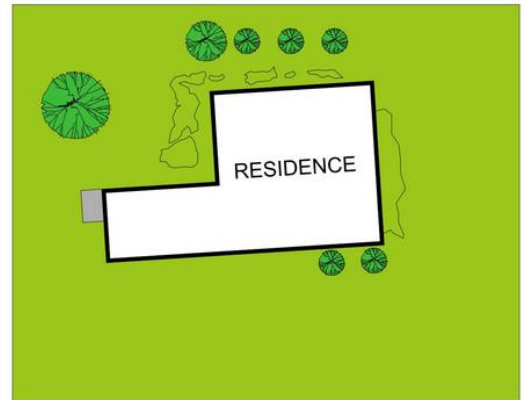
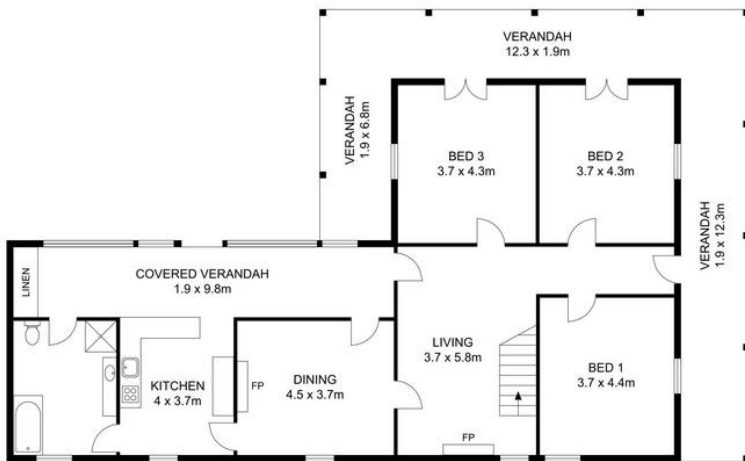
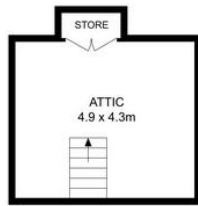
### Sanjeev Kumar 0433 289 620

Director | Licensee | [sanjeev.kumar@ljhooker.com.au](mailto:sanjeev.kumar@ljhooker.com.au)

### LJ Hooker Schofields | Riverstone 02 9157 4077

Shop 35, 111 Railway Terrace, SCHOFIELDS NSW 2762  
[schofields.ljhooker.com.au](http://schofields.ljhooker.com.au) | [schofields@ljhooker.com.au](mailto:schofields@ljhooker.com.au)





0 1 2 3 4 5  
SCALE (METRES)

## 10 Jack Street, Riverstone

Disclaimer: Dimensions are approximate and should only be used as a guide they are not to scale and no liability will be accepted

