

Riverstone, 1 Yusen Street

SOLD OFF MARKET!! SANJEEV KUMAR RIVERSTONE & GRANTHAM FARM SPECIALIST 0433 289 620

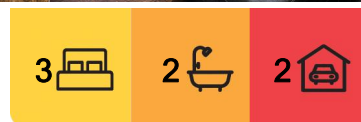
Sanjeev Kumar and the LJ Hooker Schofields team are excited to present this exceptional family home in Grantham Farm. This residence combines premium features with meticulous design to offer a truly inviting living experience. Located on a peaceful street and just a short walk from a beautiful new park, 1 Yusen Street is a perfect blend of tranquillity and convenience.

Features:

- Open-plan Living: Expansive kitchen, dining, and living areas that seamlessly flow together for effortless entertaining and daily living.
- Gourmet Kitchen: Impressive kitchen equipped with a huge walk-in pantry, a gas cooktop, dishwasher, and ample storage for organization.
- Master Suite: A luxurious retreat featuring a private balcony, walk-in robe, and a sleek ensuite for your ultimate relaxation.



Disclaimer: All information contained therein is gathered from relevant third parties sources. We cannot guarantee or give any warranty about the information provided. Interested parties must rely solely on their own enquiries.



For Sale

Sold by Sanjeev Kumar

View

ljhooker.com.au/35PHXY

Contact

Sanjeev Kumar

0433 289 620

sanjeev.kumar@ljhooker.com.au

Leopold (Leo) Metz

0403 123 199

leo.metz@ljhooker.com.au

LJ Hooker Schofields
02 9157 4077

- 2.7m high ceilings on both levels add a sense of grandeur.
- Main Bathroom: Well-appointed with a large vanity, toilet, shower, and bathtub for your convenience.
- Climate Control: Enjoy year-round comfort with smart-controlled 2 zone ducted air conditioning and a water filtration system.
- Energy Efficiency: Benefit from 5kW solar panels, reducing your energy costs while promoting sustainability.
- Spacious Backyard: A fantastic area with a large space perfect for children and pets to play.
- Rumpus Room: A versatile upstairs space ideal for a family retreat, games, or a cozy lounge area.
- Grand Entrance: A striking large front door that makes a memorable first impression.

Location Highlights:

- Approx. 110m to newly opened Park (Maya Park)
- Approx. 700m to Leap Pad Early Learning Centre
- Approx. 1.1km to Kids on Crown
- Approx. 1.8km to Riverstone Village Shopping Centre
- Approx. 1.8km to Riverstone Train Station
- Approx. 2.5km to Carmel Village Shopping Centre
- Approx. 4.8km to Tallawong Metro Station
- Approx. 5.1km to Schofields Train Station
- Approx. 5.2km to Schofields Village Shopping Centre

School & Education:

- Approx. 1.2km to Riverstone Public School
- Approx. 1.3km to Norwest Christian College
- Approx. 1.4km to Riverstone High School
- Approx. 9km to Wyndham College

Contact Sanjeev Kumar 0433 289 620 or Leo Metz 0403 123 199 today to schedule your private viewing and start the next chapter of your life in this beautiful residence.

DISCLAIMER: This advertisement contains information provided by third parties. While all care is taken to ensure otherwise, LJ Hooker Schofields does not make any representation as to the accuracy of the information contained in the advertisement, does not accept any responsibility or liability, and recommends that any client make their own investigations and inquiries. All images are indicative of the property only.



LJ Hooker Schofields
02 9157 4077

Disclaimer: All information contained therein is gathered from relevant third parties sources. We cannot guarantee or give any warranty about the information provided. Interested parties must rely solely on their own enquiries.

More About this Property

Property ID 35PHXY

Property Type House

Sanjeev Kumar 0433 289 620

Director | Licensee | sanjeev.kumar@ljhooker.com.au

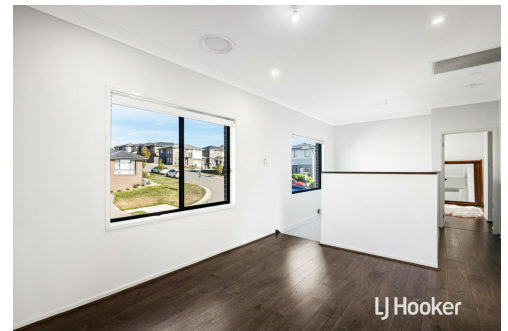
Leopold (Leo) Metz 0403 123 199

Sales Associate | leo.metz@ljhooker.com.au

LJ Hooker Schofields 02 9157 4077

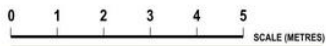
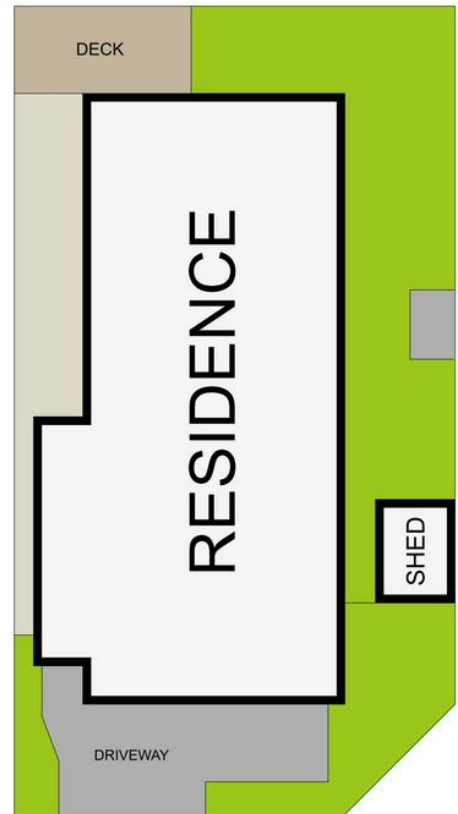
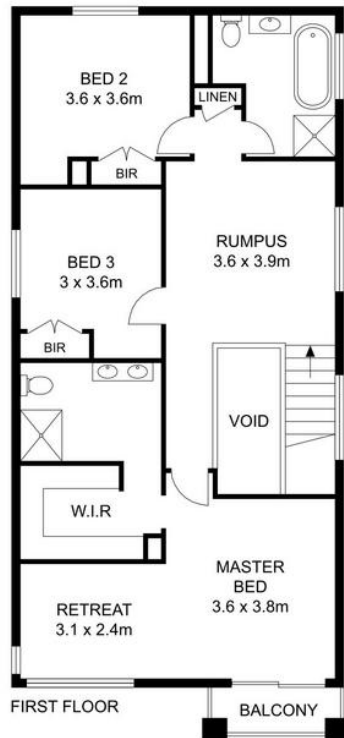
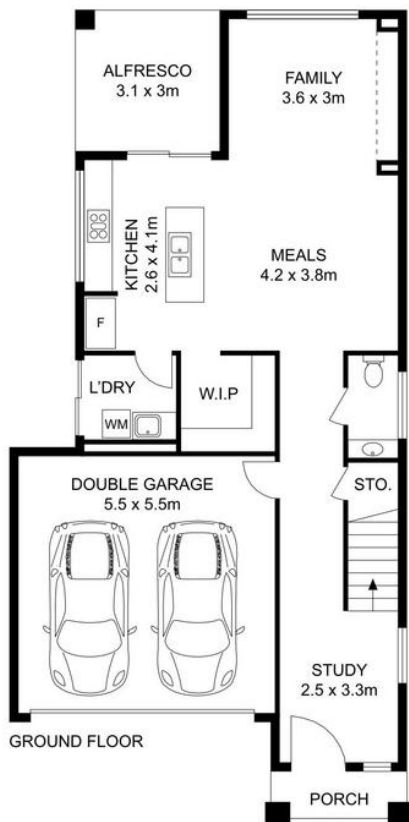
Shop 35, 111 Railway Terrace, SCHOFIELDS NSW 2762

schofields.ljhooker.com.au | schofields@ljhooker.com.au



LJ Hooker Schofields
02 9157 4077

Disclaimer: All information contained therein is gathered from relevant third parties sources.
We cannot guarantee or give any warranty about the information provided. Interested parties must rely solely on their own enquiries.



1 Yusen Street, Riverstone

Disclaimer: Floor plans and site plans are intended as a guide only. They are not part of any legal document or title and are subject to errors, omission, and inaccuracies and should not be used as reference. Sizes and dimensions are approximate only. Interested parties should make their own enquiries. Floor plan by : Sync Studios Pty Ltd



LJ Hooker Schofields
02 9157 4077

Disclaimer: All information contained therein is gathered from relevant third parties sources. We cannot guarantee or give any warranty about the information provided. Interested parties must rely solely on their own enquiries.