

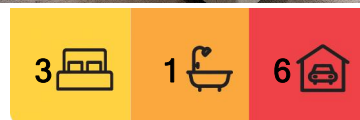


Risdon Vale, 45 Spinifex Road

Risdon Vale - A Touch of Bali in the 'Burbs

Ant's "Fluff-Free" Description...

- * Fully renovated throughout and backing onto a Reserve, this COULD be the finest home in Risdon Vale - but I'll let YOU be the judge of that!
- * From front to back and top to bottom, EVERYTHING has been done - so all YOU need to do is move in and enjoy.
- * Spacious formal lounge with reverse cycle heat pump AND cosy electric heater.
- * Beautifully renovated kitchen and dining area with corner pantry and loads of bench space.
- * Three generous bedrooms - all with built in robes.
- * Family bathroom with separate shower and corner spa - plus a separate second toilet.
- * And how about THIS for a bonus...
- * There's also a large second living area with direct access to the outside entertaining areas - a rare find indeed in this price range!



For Sale
Please Call

View
ljhooker.com.au/5WKHFCS

Contact
Ant Manton
0408 621 856
antmanton@ljhookerpinnacle.com

Zac Flanagan
0466 685 937
zflanagan@ljhookerpinnacle.com



LJ Hooker Pinnacle Property
(03) 6272 8177

Disclaimer: All information contained therein is gathered from relevant third parties sources. We cannot guarantee or give any warranty about the information provided. Interested parties must rely solely on their own enquiries.

- * Then step outside and experience a touch of paradise - there are a multitude of external "party areas" for you and your friends to enjoy all year round!
- * And if you love your cars and other toys you're all set as well - there's a HUGE double garage and workshop, complete with its very own wood-heater!
- * Plus a HEAP of extra off street parking to keep your cars secure.
- * Add to all this the immaculate gardens and the package is complete - all YOU need to do is come and have a look and fall in love!

Onwards and upwards to your Risdon Vale "touch of Bali in the 'burbs!"

"I Work Harder - It's THAT Simple!"

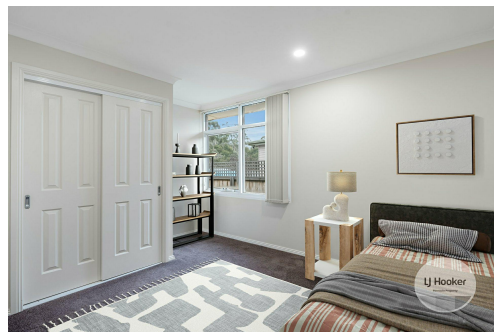
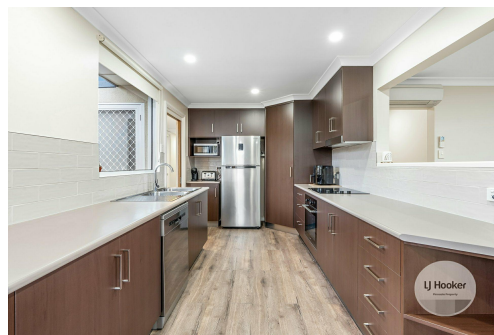
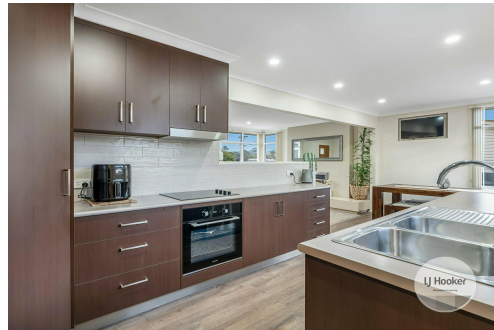
Disclaimer: The information contained herein has been supplied to us and we have no reason to doubt its accuracy, however, cannot guarantee it. Accordingly, all interested parties should make their own enquiries to verify this information.

More About this Property

Property ID	5WKHFCS
Property Type	House
House Size	129 m ²
Land Area	688 m ²
Including	Air Conditioning Toilets (2) Courtyard Balcony Deck Dishwasher Outdoor Entertaining Workshop Built-in-Robes Secure Parking Fully Fenced Remote Garage

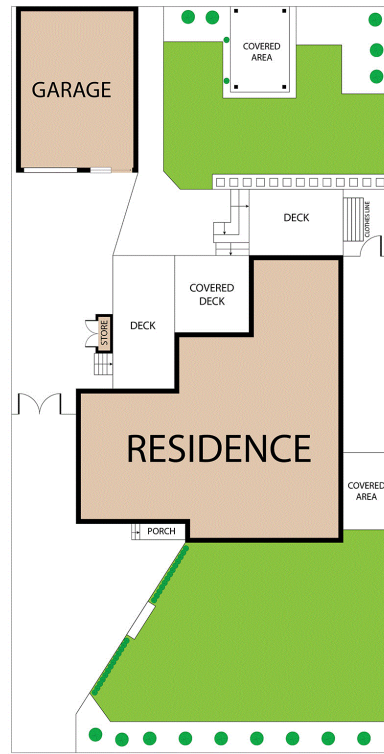
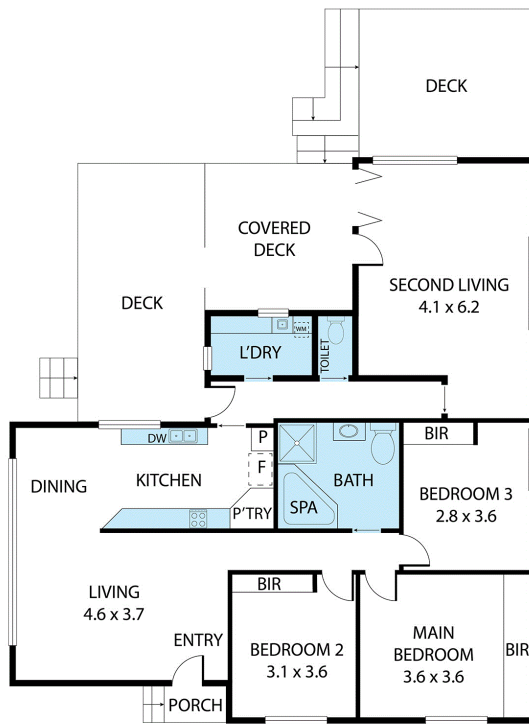
Ant Manton 0408 621 856
 Real Estate Agent | antmanton@ljhookerpinnacle.com
Zac Flanagan 0466 685 937
 Operations Manager to Ant Manton | zflanagan@ljhookerpinnacle.com

LJ Hooker Pinnacle Property (03) 6272 8177
 402 Main Road, GLENORCHY TAS 7010
pinnacleproperty.ljhooker.com.au | hello@ljhookerpinnacle.com



Disclaimer: All information contained therein is gathered from relevant third parties sources. We cannot guarantee or give any warranty about the information provided. Interested parties must rely solely on their own enquiries.

LJ Hooker Pinnacle Property
(03) 6272 8177



45 Spinifex Road, Risdon Vale

Total approx. floor area: 129m²

Areas and dimensions are approximate and therefore this floor plan should only be used for illustrative purposes.

Real Estate Marketing by nextcreative.com.au



LJ Hooker Pinnacle Property
(03) 6272 8177

Disclaimer: All information contained therein is gathered from relevant third parties sources.
We cannot guarantee or give any warranty about the information provided. Interested parties must rely solely on their own enquiries.