



11 Beat Street, Ripley

SOLD BY KEVIN AHN & SIENNA KIM

If you're chasing the perfect investment opportunity with solid returns and future capital growth, this is it. Modern, low-maintenance, and in impeccable condition, this dual-living duplex offers a combined rental income of \$950 per week - and it's already tenanted! Built in 2021 and positioned in a peaceful pocket of Ripley, this is your chance to secure not one, but two residences under one title.

Top 5 Features at a Glance:

1. Dual-income investment with \$950/week return - both units already tenanted.
2. Modern duplex layout: 11A (3 bed, 2 bath, 1 garage) & 11B (2 bed, 1 bath, 1 car).
3. Contemporary finishes throughout - built in 2021 and well maintained.
4. Spacious bedrooms, all with built-ins and ceiling fans; split system A/C.
5. Fully fenced yard and quiet location near local park and future developments.

Inside, each home delivers contemporary comfort with a layout that maximises space and light. The open-plan living zones flow easily to

5 🚗 3 🚗 2 🚗

FOR SALE

Please Call

AGENTS

Kevin Ahn
0400 098 188
kevinahn@ljhsbh.com.au

Sienna Kim
0477 735 068
siennakim@ljhpp.com.au

AGENCY

LJ Hooker Property Partners
07 3344 0288

All information contained therein is gathered from relevant third parties sources.
We cannot guarantee or give any warranty about the information provided.
Interested parties must rely solely on their own enquiries.

 **LJ Hooker**

covered outdoor areas, while neutral finishes and durable tiled flooring set the tone for modern, low-maintenance living.

The kitchens are well-appointed with quality appliances, ample cabinetry and stylish tiled splashbacks. Both homes include dishwashers, electric cooktops and sleek benchtops - ideal for tenants. Each property also includes its own secure garage and internal laundry facilities, plus split system air-conditioning and ceiling fans throughout for year-round comfort.

The bedrooms are generous in size, with built-in robes and soft carpets. The bathrooms are sleek and fresh, with chrome tapware and neutral tones - easy to clean and easy to love.

Outside, both residences enjoy private, fully fenced yards with tidy lawns. The alfresco patios are perfect for weekend relaxing or a quiet cuppa. And with Colorbond roofing and brick construction, this home is built to last with minimal upkeep.

Investors will be excited to know this home is in a fast-growing precinct with plenty of development in the pipeline. Just a short walk to Symphony Park and Playground, and positioned in a quiet street, it offers a relaxed lifestyle with all the essentials nearby. Ripley is emerging as one of Queensland's best performing corridors, thanks to strong infrastructure, new shopping hubs and ongoing residential growth.

Whether you're looking to add to your portfolio, house multiple generations, or live in one side while renting out the other - this is the kind of property that works hard for you. Contact Sergio Chen or Sienna Kim today to explore this savvy investment opportunity!

All information contained herein is gathered from sources we consider to be reliable. However, we cannot guarantee or give any warranty about the information provided and interested parties must solely rely on their own enquiries.

Sunday & Summer Property Specialists Pty Ltd with Sunnybank
Districts P/L T/A LJ Hooker Property Partners
ABN 56 653 127 701 / 21 107 068 020

MORE DETAILS

Property ID B3AGF4R
Property Type House
Land Area 400 m2
Including Air Conditioning
Balcony
Dishwasher
Outdoor Entertaining
Built-in-Robes
Secure Parking
Fully Fenced
Remote Garage

Kevin Ahn 0400 098 188

Agent/Independent Contractor | kevinahn@ljhsbh.com.au

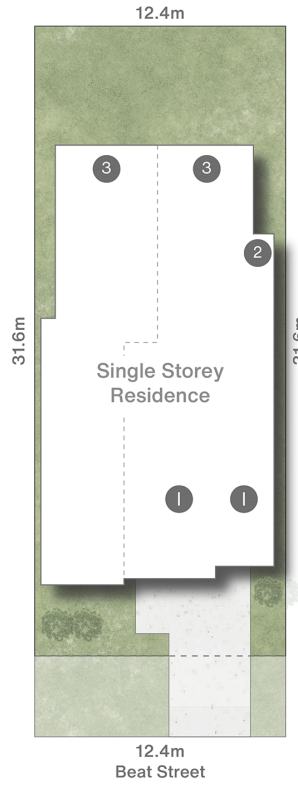
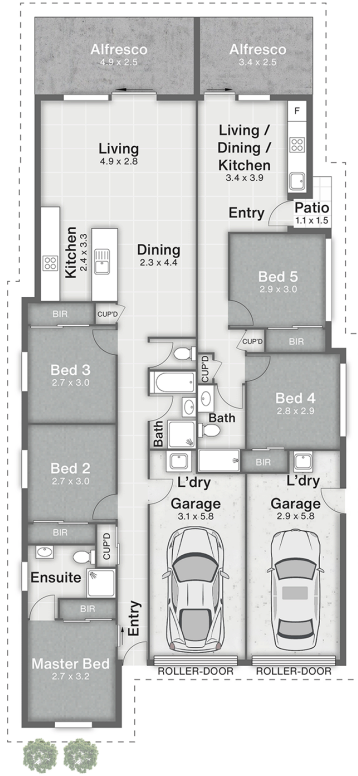
Sienna Kim 0477 735 068

Agent with Kevin Ahn | siennakim@ljhpp.com.au

LJ Hooker Property Partners 07 3344 0288

25 Pinelands Road, SUNNYBANK HILLS QLD 4109
propertypartners.ljhooker.com.au | sunnybankhills@ljhpp.com.au





- 1 Garage
- 2 Patio
- 3 Alfresco

11 Beat Street RIPLEY

5 | 3 | 2 | 177m² | 400m²



DISCLAIMER
This is not a legal document; all measurements and dimensions are approximate and are subject to errors, omission or misstatement. No liability will be accepted. Plans are shown for marketing purposes only.