

## Ridgewood, 21 Shelburne Gardens

### Spacious Family Home with Room for Everyone!



Set on a generous block, this well-appointed four-bedroom, two-bathroom home is perfect for growing families in search of comfort, space, and functionality. Thoughtfully designed with multiple living areas, stylish modern updates, and fantastic outdoor features, this home ticks every box.

Inside, the large master suite offers a peaceful retreat, complete with split system air conditioning, his and hers walk-in robes, and a private ensuite. The remaining three bedrooms are all generously sized, with two featuring built-in robes and split system air conditioning, while the third is fitted with a ceiling fan-providing year-round comfort for the whole family.

At the front of the home, a separate lounge offers a quiet space to unwind. The spacious open-plan living and meals area wraps around a sleek, modern kitchen, forming the true heart of the home. With another split system here, the space remains cool and comfortable

**For Sale**  
Please Call

**View**  
[ljhooker.com.au/K1THRD](http://ljhooker.com.au/K1THRD)

**Contact**  
**Ian Knight**  
0413 447 016  
[ian.knight@ljhooker.com.au](mailto:ian.knight@ljhooker.com.au)  
**Marco Viljoen**  
0468747725  
[marco.viljoen@ljhooker.com.au](mailto:marco.viljoen@ljhooker.com.au)



**LJ Hooker Joondalup**  
**(08) 9300 2100**

**Disclaimer:** All information contained therein is gathered from relevant third parties sources. We cannot guarantee or give any warranty about the information provided. Interested parties must rely solely on their own enquiries.

whether you're entertaining guests or enjoying a cosy night in with the family.

Step outside to a large undercover alfresco area that overlooks a big, grassed backyard- perfect for children and pets to play freely. A huge powered shed adds exceptional value with ample storage or workshop potential, while the double garage includes a convenient roller door to the rear, offering extra access to the backyard.

The location is hard to beat. You're just a seven-minute drive to the beach and the popular Portofinos Beach Bar Kitchen, bringing the coastal lifestyle right to your doorstep. Local amenities are all within easy reach, including Lukin Shopping Centre approximately 1.3 kilometers away, and Merriwa Primary School just 1 kilometer from home. For families with older children, Butler College and Clarkson Community High School are both approximately 1.5 kilometers away. Ronsard Park is practically at your doorstep-just 80 meters away-offering a beautiful space to unwind or play.

Additional features such as solar panels help keep energy costs down, and the low-maintenance gardens ensure you can spend more time enjoying everything this vibrant and well-connected community has to offer.

This beautifully presented home offers exceptional value, a functional layout, and a lifestyle that's ready to enjoy. Don't miss your chance to make it yours.

Rental appraisal

\$730 - \$760 per week

## More About this Property

<b>Property ID</b>	K1THRD
<b>Property Type</b>	House
<b>House Size</b>	161 m2
<b>Land Area</b>	595 m2
<b>Including</b>	Toilets (2)

### Ian Knight 0413 447 016

Residential Sales Specialist | [ian.knight@ljhooker.com.au](mailto:ian.knight@ljhooker.com.au)

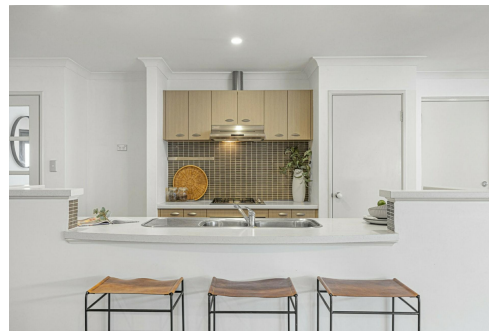
### Marco Viljoen 0468747725

Sales Consultant | [marco.viljoen@ljhooker.com.au](mailto:marco.viljoen@ljhooker.com.au)

### LJ Hooker Joondalup (08) 9300 2100

4/25 Delage Street, JOONDALUP WA 6027

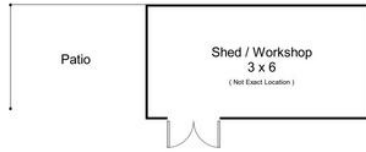
[joondalup.ljhooker.com.au](http://joondalup.ljhooker.com.au) | [admin.joondalup@ljhooker.com.au](mailto:admin.joondalup@ljhooker.com.au)



**LJ Hooker Joondalup**  
**(08) 9300 2100**

**Disclaimer:** All information contained therein is gathered from relevant third parties sources.

We cannot guarantee or give any warranty about the information provided. Interested parties must rely solely on their own enquiries.



21 Shelburne Gardens, Ridgewood

For information and guidance purpose only / measurements shown are approximate



**LJ Hooker Joondalup**  
**(08) 9300 2100**

**Disclaimer:** All information contained therein is gathered from relevant third parties sources. We cannot guarantee or give any warranty about the information provided. Interested parties must rely solely on their own enquiries.