



## Ridgewood, 11 Feakle Bend

### Spacious & Stylish 4x2 Family Home in a Quiet Location

This spacious and stylish 4-bedroom, 2-bathroom family home is nestled in a peaceful location and is sure to be in high demand. With plenty of room for a growing family, it offers a generous backyard, perfect for children and pets to play, and is situated directly opposite Tarbert Park.

The expansive master suite includes two separate walk-in robes, while the double-sized minor bedrooms all feature built-in robes. Multiple living areas provide versatility, including a front lounge, an open-plan family and dining area, and a separate theatre room. The modern kitchen is equipped with stainless steel appliances and a convenient shoppers' entrance from the garage. The main bathroom features a bathtub, and the home is fitted with evaporative air conditioning for year-round comfort. A walk-in linen cupboard provides additional storage, while the undercover patio creates the perfect space for entertaining family and friends.

4 2 2

**For Sale**  
\$700k+

**View**  
[ljhooker.com.au/JHSHRD](https://ljhooker.com.au/JHSHRD)

**Contact**  
**Ian Knight**  
0413 447 016  
[ian.knight@ljhooker.com.au](mailto:ian.knight@ljhooker.com.au)  
**Marco Viljoen**  
0468747725  
[marco.viljoen@ljhooker.com.au](mailto:marco.viljoen@ljhooker.com.au)



**Disclaimer:** All information contained therein is gathered from relevant third parties sources. We cannot guarantee or give any warranty about the information provided. Interested parties must rely solely on their own enquiries.

**LJ Hooker Joondalup**  
(08) 9300 2100



The fully enclosed front and back yards ensure security and peace of mind, with easy-care reticulated gardens adding to the home's appeal. Ideally located close to shops, parks, and public transport, this home offers the perfect balance of comfort, convenience, and lifestyle.

Location Highlights:

- Directly opposite Tarbert Park, with plenty of additional parks close by
- Approx. 900m from Lukin Shopping Village
- Within 1.2km of Irene McCormack Catholic College, Butler College, and St Francis of Assisi Catholic Primary School
- Quick access to the freeway
- Approx. 750m to 115 Collective Cafe

Don't miss this opportunity-contact us today to arrange a viewing!

## More About this Property

Property ID	JHSHRD
Property Type	House
House Size	187 m <sup>2</sup>
Land Area	561 m <sup>2</sup>

**Ian Knight 0413 447 016**

Residential Sales Specialist | [ian.knight@ljhooker.com.au](mailto:ian.knight@ljhooker.com.au)

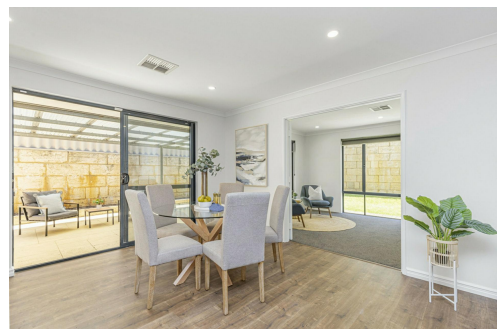
**Marco Viljoen 0468747725**

Sales Consultant | [marco.viljoen@ljhooker.com.au](mailto:marco.viljoen@ljhooker.com.au)

**LJ Hooker Joondalup (08) 9300 2100**

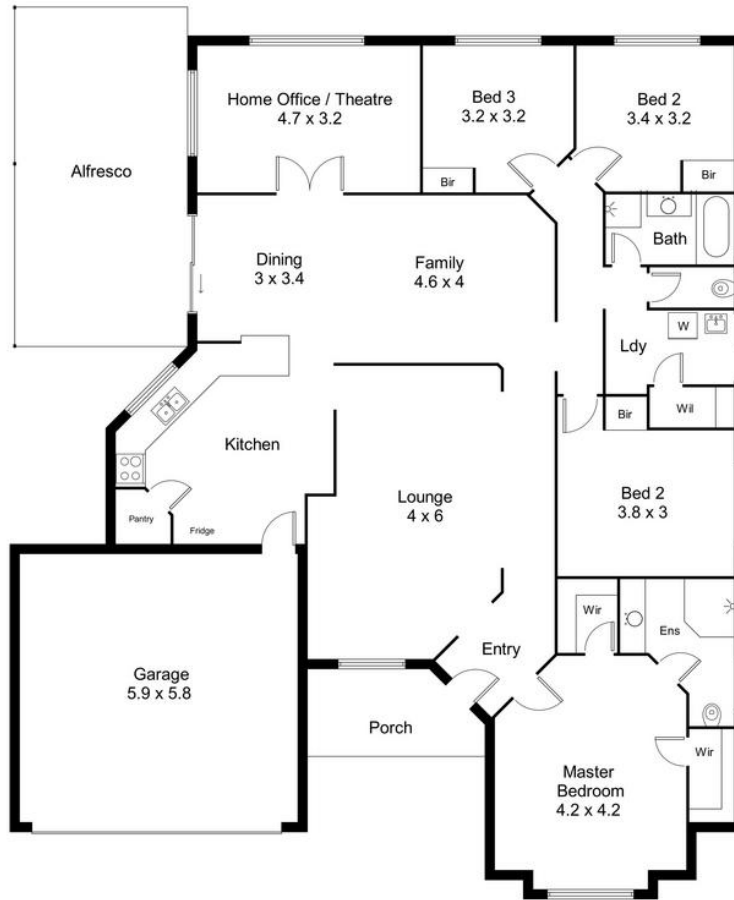
4/25 Delage Street, JOONDALUP WA 6027

[joondalup.ljhooker.com.au](http://joondalup.ljhooker.com.au) | [admin.joondalup@ljhooker.com.au](mailto:admin.joondalup@ljhooker.com.au)



**Disclaimer:** All information contained therein is gathered from relevant third parties sources. We cannot guarantee or give any warranty about the information provided. Interested parties must rely solely on their own enquiries.

**LJ Hooker Joondalup**  
**(08) 9300 2100**



11 Feakle Bend, Ridgewood

/ for information and guidance purpose only /  
measurements shown are approximate



**LJ Hooker Joondalup**  
**(08) 9300 2100**

**Disclaimer:** All information contained therein is gathered from relevant third parties sources.  
We cannot guarantee or give any warranty about the information provided. Interested parties must rely solely on their own enquiries.