

Ridgehaven, 2/477 Milne Road

Peaceful Low-Maintenance Living!



Welcome to your new home in the popular suburb of Ridgehaven.

This property offers the lucky purchaser the perfect blend of comfort and convenience.

Originally constructed in 1976 and situated in a prime location on a manageable allotment, it features an enclosed outdoor area and sufficient off-street private parking.

This is one you won't want to miss!

Features you will love;

- * 3 Generous bedrooms, all with built-in robes
- * Bedroom 2 with ceiling fan
- * Peace of mind living with roller shutters fitted to several windows
- * Split system unit in the lounge area
- * Wall mounted A/C in bedroom 1
- * Freshly painted interior

For Sale

\$500,000 - \$550,000

View

ljhooker.com.au/2AFHGJU

Contact

Ryan Graham

0400 912 287

ryang@ljhsales.com.au

Robert Bonelli

0497 808 908

robertb@ljhsales.com.au



Disclaimer: All information contained therein is gathered from relevant third parties sources.

We cannot guarantee or give any warranty about the information provided. Interested parties must rely solely on their own enquiries.

**LJ Hooker Greenwith | Golden Grove
| Mawson Lakes | Modbury
(08) 8289 6660**

- * Low-maintenance, easy-care gardens
- * Gas hot water service installed
- * NBN to the premises
- * Enclosed outdoor entertainment area, an ideal spot for the BBQ!
- * Spacious kitchen with electric cooktop, sufficient storage, and bench space throughout
- * Secure off-street parking with a single garage as well as additional driveway parking

This property presents a wonderful opportunity for first-time buyers looking to enter the property market, savvy investors looking to bolster their portfolios, or those looking to retain their independence and downsize.

Set in a location that you will simply love calling your own!

Within moments to all the major retailers and eateries on offer at Westfield Tea Tree Plaza, Modbury Hospital, Civic Park, local sporting clubs, Waterworld Aquatic Center and a number of schools both public and private. Add to the mix several public transport options including the nearby O-Bahn commuting to the Adelaide CBD can be done with ease!

Don't let this become a missed opportunity. Register your interest with Ryan Graham today!

All information provided has been obtained from sources we believe to be accurate, however, we cannot guarantee the information is accurate and we accept no liability for any errors or omissions (including but not limited to a property's land size, floor plans and size, building age and condition). Interested parties should make their own enquiries and obtain their own legal and financial advice. Should this property be scheduled for auction, the Vendor's Statement may be inspected at either of our two LJ Hooker Property Specialists Real Estate offices for 3 consecutive business days immediately preceding the auction and at the auction for 30 minutes before it starts.

RLA 208516

More About this Property

Property ID	2AFHGJU
Property Type	Unit
Including	Air Conditioning Courtyard Floorboards Built-in-Robes Secure Parking

Ryan Graham 0400 912 287

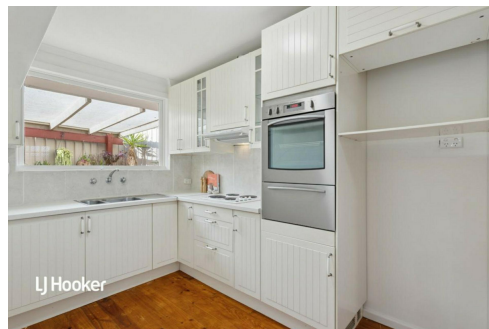
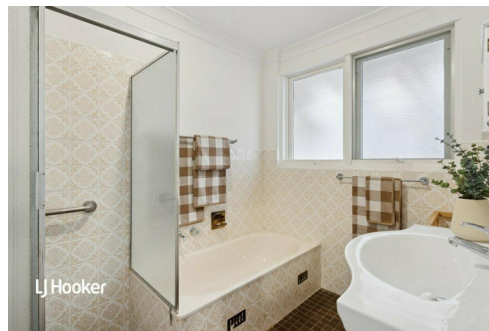
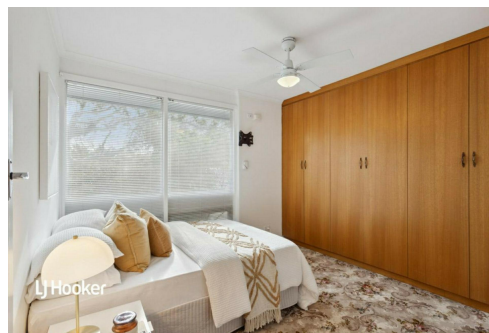
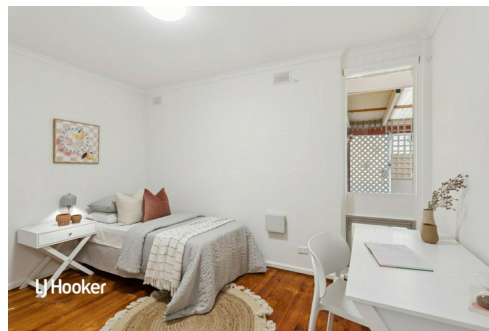
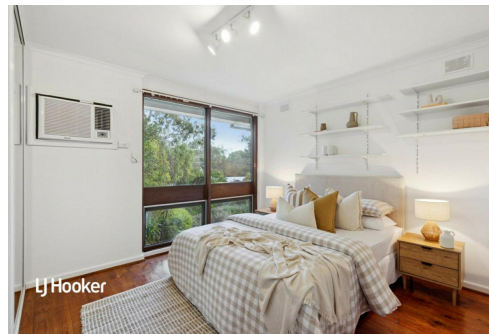
Sales Specialist | ryang@ljhsales.com.au

Robert Bonelli 0497 808 908

Sales Specialist | robertb@ljhsales.com.au

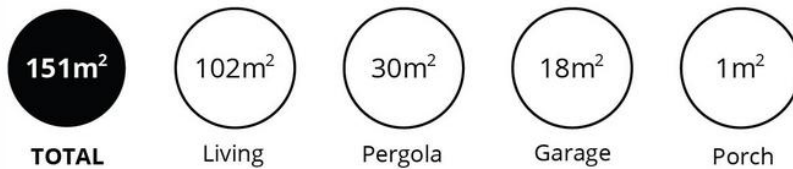
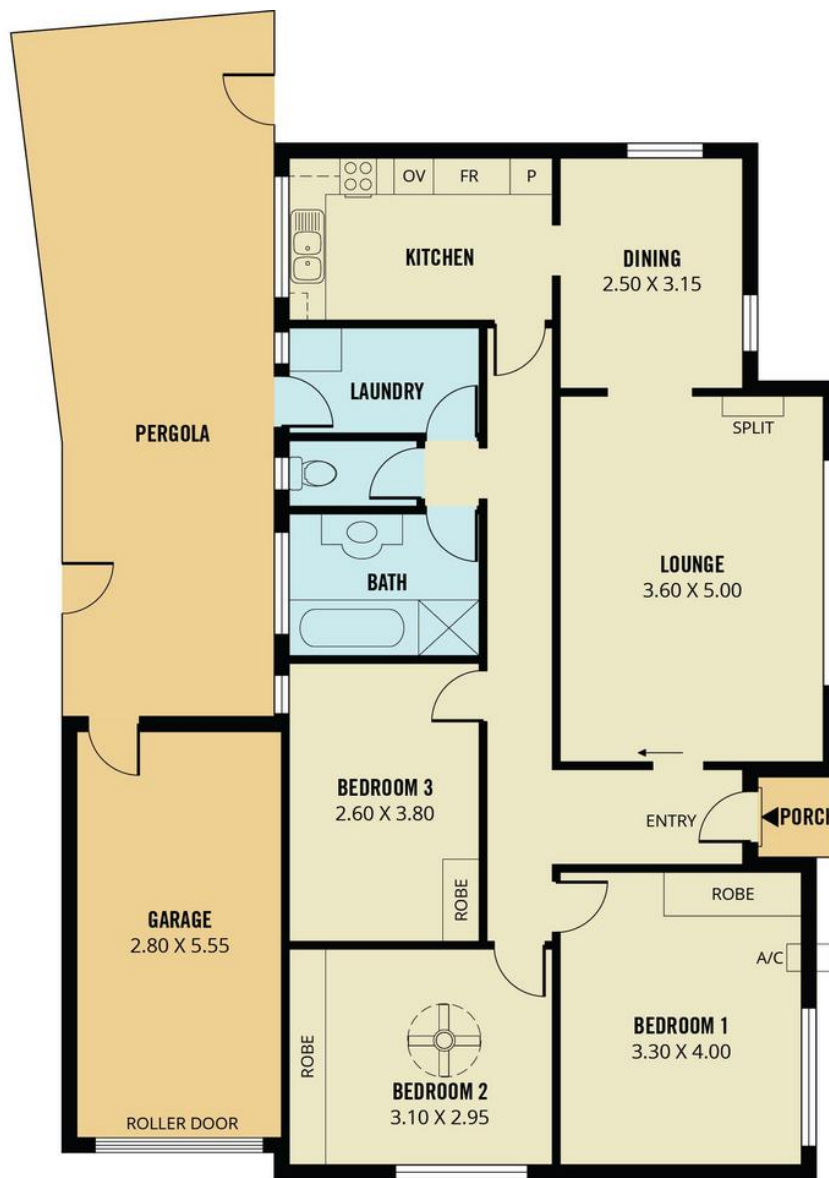
LJ Hooker Greenwith | Golden Grove | Mawson Lakes | Modbury (08) 8289 6660

North East, Shop 2, 1007 North East Road, RIDGEHAVEN SA 5097
greenwithgoldengrove.ljhooker.com.au | info@ljhsupport.com.au



Disclaimer: All information contained therein is gathered from relevant third parties sources. We cannot guarantee or give any warranty about the information provided. Interested parties must rely solely on their own enquiries.

**LJ Hooker Greenwith | Golden Grove
 | Mawson Lakes | Modbury
 (08) 8289 6660**



Scale in metres. This drawing is for illustration purposes only. All measurements are approximate and details intended to be relied upon should be independently verified. Produced by **The Fotobase Group**