

## Ridgehaven, 3/1047 North East Road

Stylish, Modern and Low-Maintenance - Move in and Enjoy!

Auction Location: 3/1047 North East Road, Ridgehaven SA 5097

Have you been searching for a modern and stylish home?  
Look no further than this stunning, low maintenance, 2022 built home!

Set in Ridgehaven, where everything you need is at your fingertips. This home has been thoughtfully designed and meticulously executed. Boasting quality fixtures, impeccable finishes and a flexible floorplan, the only thing left to do is move in and enjoy!

Features you'll love:

- \* Three spacious bedrooms
- \* Master with large ensuite, walk-in robe, and balcony
- \* Bedroom two with built-in robe



**Disclaimer:** All information contained therein is gathered from relevant third parties sources. We cannot guarantee or give any warranty about the information provided. Interested parties must rely solely on their own enquiries.



### Auction

Sat 7th Jun @ 11:00AM

### View

Sat 7th Jun @ 10:30AM - 11:00AM

### Contact

**Ryan Graham**

0400 912 287

[ryang@ljhsales.com.au](mailto:ryang@ljhsales.com.au)

**LJ Hooker Greenwith | Golden Grove  
| Mawson Lakes | Modbury  
(08) 8289 6660**

- \* Ensuite with floor to ceiling tiles
- \* High ceilings on the ground level
- \* Open plan living on the ground level
- \* Under stair storage
- \* Stunning kitchen with central island counter, gas cooktop, dishwasher, butler's pantry, and ample storage
- \* Powder room on the ground level
- \* Year-round comfort with zoned ducted reverse cycle heating and cooling throughout
- \* Single garage with automatic roller door, providing secure parking and internal access
- \* Westfield TTP and the O-Bahn within walking distance

Set in a prime location, you'll enjoy unparalleled convenience where owning a car may seem unnecessary! With major retailers and popular eateries at Westfield Tea Tree Plaza and the O-Bahn conveniently close, offering an easy commute to Adelaide CBD. Just moments from Modbury Hospital, Civic Park, multiple public and private schools, and scenic walking trails at Anstey Hill, this is a location and a home you'll love calling your own!

Homes with this much to offer do not last long! Register your interest with Ryan Graham today.

All information provided has been obtained from sources we believe to be accurate, however, we cannot guarantee the information is accurate and we accept no liability for any errors or omissions (including but not limited to a property's land size, floor plans and size, building age and condition). Interested parties should make their own enquiries and obtain their own legal and financial advice. Should this property be scheduled for auction, the Vendor's Statement may be inspected at either of our two LJ Hooker Property Specialists Real Estate offices for 3 consecutive business days immediately preceding the auction and at the auction for 30 minutes before it starts.

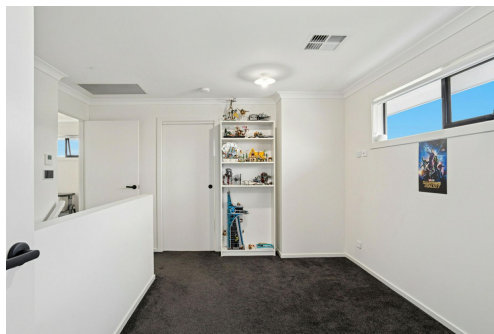
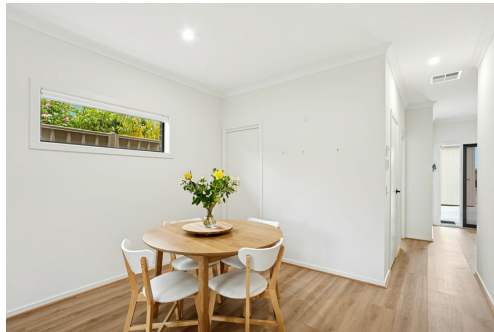
RLA 208516

## More About this Property

Property ID	2BU0GJU
Property Type	House
House Size	158 m2
Land Area	175 m2

**Ryan Graham 0400 912 287**  
Sales Specialist | [ryang@ljhsales.com.au](mailto:ryang@ljhsales.com.au)

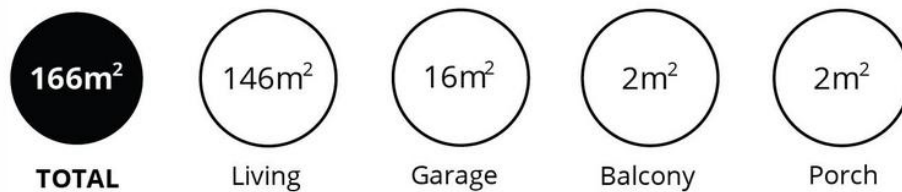
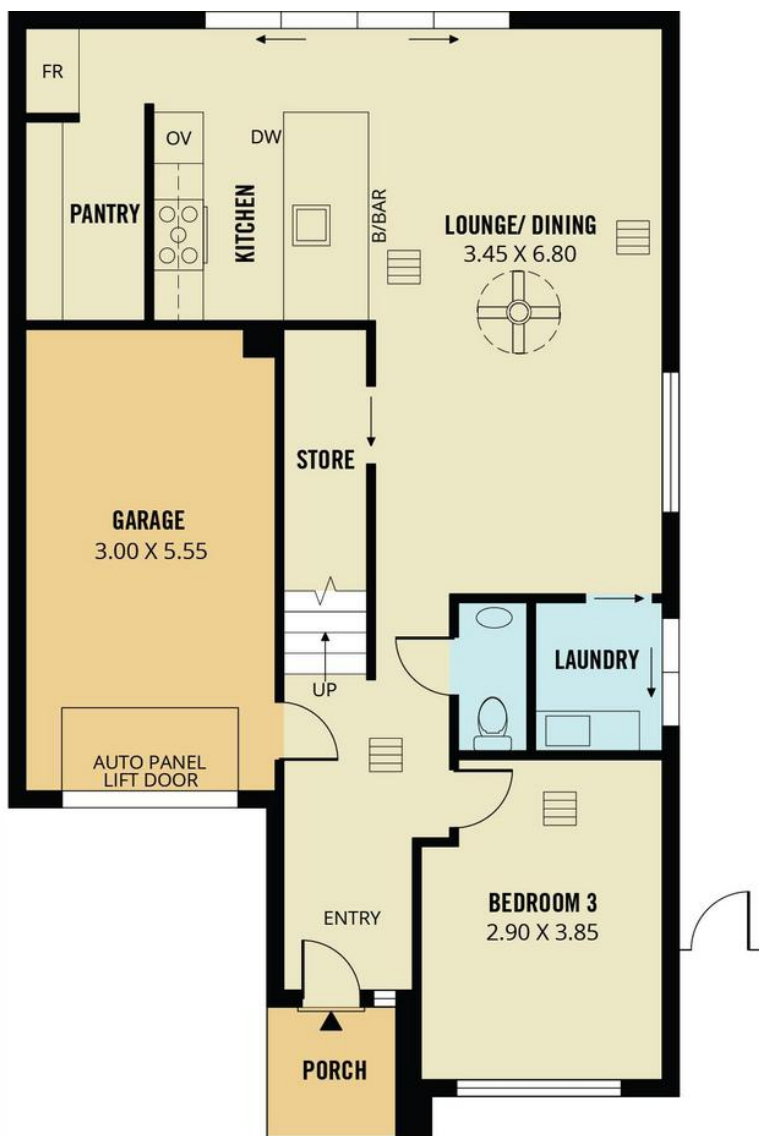
**LJ Hooker Greenwith | Golden Grove | Mawson Lakes | Modbury (08) 8289 6660**  
North East, Shop 2, 1007 North East Road, RIDGEHAVEN SA 5097  
[greenwithgoldengrove.ljhooker.com.au](http://greenwithgoldengrove.ljhooker.com.au) | [info@ljhsupport.com.au](mailto:info@ljhsupport.com.au)



**Disclaimer:** All information contained therein is gathered from relevant third parties sources. We cannot guarantee or give any warranty about the information provided. Interested parties must rely solely on their own enquiries.

**LJ Hooker Greenwith | Golden Grove  
| Mawson Lakes | Modbury  
(08) 8289 6660**





Scale in metres. This drawing is for illustration purposes only. All measurements are approximate and details intended to be relied upon should be independently verified.

Produced by **The Fotobase Group**