

4 Bucknall Court, Regency Downs

Don't Miss This One!

Set on a generous 8000sqm block in a quiet cul-de-sac, 4 Bucknall Court, Regency Downs presents a brilliant opportunity for buyers with vision.

This solid family home offers four bedrooms, including a master with ensuite, and plenty of space for comfortable living. While the kitchen and bathrooms are ready for an update, the size and layout of the home provide an excellent foundation to renovate, refresh and truly make it your own.

Outside is where this property really shines. A circular driveway makes access easy and welcoming, while two large double sheds offer outstanding storage for vehicles, tools or hobbies. Add to that an inground swimming pool and expansive outdoor living space, and you have the perfect setup for relaxed country living with room to grow.

With a great home size, excellent shedding and a fantastic block of land, this property represents outstanding value and potential in a sought-after acreage location.

Call Janette Lewis on 0407 144 403 to arrange your inspection, or come along to the open home and see the opportunity for yourself.

4 2 4

FOR SALE

Offers Over \$700,000

VIEW

Wed 28th Jan @ 4:00PM - 4:30PM

AGENTS

Janette Lewis
0407 144 403
jlewis@ljhplainland.com.au

AGENCY

LJ Hooker Plainland | Laidley
(07) 5411 4960

All information contained therein is gathered from relevant third parties sources.
We cannot guarantee or give any warranty about the information provided.
Interested parties must rely solely on their own enquiries.



MORE DETAILS

Property ID	HGHHBC
Property Type	House
Land Area	8000 m2
Including	Pool

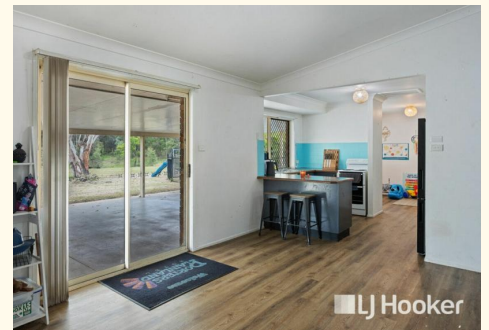
Janette Lewis 0407 144 403

Sales Consultant | jlewis@ljhplainland.com.au

LJ Hooker Plainland | Laidley (07) 5411 4960

Shop 1/16 Gehrke Road, PLAINLAND QLD 4341

laidley.ljhooker.com.au | plainland@ljhplainland.com.au



All information contained therein is gathered from relevant third parties sources.
We cannot guarantee or give any warranty about the information provided.
Interested parties must rely solely on their own enquiries.